

Product Catalogue

NEW 2023

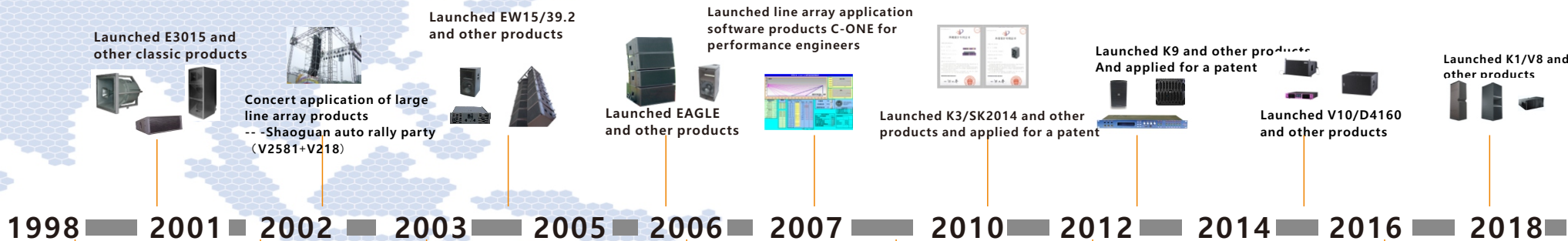
KIH[®]
PRO

Professional sound systems

[Http://www.khpro.cn](http://www.khpro.cn)



morgan sound
1998



1998 ■ 2001 ■ 2002 ■ 2003 ■ 2005 ■ 2006 ■ 2007 ■ 2010 ■ 2012 ■ 2014 ■ 2016 ■ 2018



Ck tam and Jacky zhang conceived and launched MG brand audio product with the concept of "sound is science as well as art".

The first line array product for large site application-- Panyu Senmei amusement park center stage(DV281+DV315)

Fixed installation application of large line array products --- Dayantabei square , Xi 'an (V2581+V218)

Large line array product rental application -- cctv channel west coast
CCTV avenue of stars
Yellow River cultural festival
Beijing fourth chaoyang pop music week
Macao's first Portuguese games...

Became a member of 5A unit of China performing arts equipment technical association

KTV project digital front level and speaker application-- Harbin Taipei pure KTV
Wuhan jinsha international club
Lanzhou lingxiu pure KTV
Foshan emgrand international club
Wuhan diamond world international club.

Installation applications for medium and small wire array products-- Guangzhou Huameinai music restaurant
Guangzhou Yudelai international school gymnasium
Conference hall of southern investment group
MINI bar in Yulin, Guangxi...



Company Introduction

KHPRO(KHPRO Professional, KHPRO Audio) -- Guangzhou KHPRO Audio electric co. LTD was established in 2001, committed to professional audio, lighting , KTV song request system and video system's development, production, sales, engineering design and installation and rental project professional system integration enterprise. The company keeps innovating and changing in the industry, over the years the company has accumulated rich experience. At the same time the company continues to inject funds, research integration of systematic structure, and strive to improve the competitiveness of products! And strive to establish a flagship position in the industry.

The company has an experienced and energetic development and sales team, strong scientific research and development technical force, professional, focus, monograph working attitude, won the support and love of many customers, dealers and suppliers. Chinese Mainland, Taiwan and Hong Kong have production department and engineering sales service organizations.

In order to ensure product quality and engineering quality, the company has passed the ISO9000 quality management system certification, "simple, stable, durable" is our product and engineering project requirements. In terms of customer service, we try our best to create high-value products and engineering projects for customers, while providing personalized service platform.

Always think of others, make life more meaningful! Wish we sincerely, mutual encouragement, progress together and create a better tomorrow.....



Factory



Company (GZ, china)



Company (Hong Kong)



Company (Taiwan)

Sound is a profound science. We believe that the more people know about sound science, the more the industry will benefit. We have accumulated rich experience in this industry for many years and would like to share with you. In fact, we have been producing and engineering wire array speakers since 2002. And after many years of development, we continue to thrive. This has exceeded the expectations of our customers, but also in line with our style; Aim for better and keep bringing surprises --KHPRO.

► Introduction

Features:

Waveform technology sound amplification system, excellent remote projection capability, high definition, precise predictability.

Multilayer birch plywood box, suitable for flow performance and fixed installation.

Special adjustable data for digital processors. Complete bending line source array adjustable hoist cover.

Application:

Bar amplification, concerts, theater, indoor and outdoor performances, fixed installation, indoor hall stadium.

K1



K2



K1-SB



► Technical Specifications

Rated Power Aes	1200W/600W/200W	800W/300W/160W	2000W
Peak Power	6000W	3000W	6000W
Nominal Impedance	8Ω	8Ω/16Ω	4Ω
Frequency Response(+/-3db)	40Hz-16KHz -3dB	60Hz-18KHz -3dB	30Hz-100Hz -3dB
Sensitivity (2. 83/1m)	105dB	102dB	95dB
Maximum Sp1 Continuous	140dB	138dB	133dB
Maximum Sp1 Peak	146dB	142dB	142dB
Dispersion -6db			
Horizontal	90	90	Omni-directional
Vertical	0-5	0.25-10	
Drive Specification			
Lf Drive	2*15"NEO driver	2*12"NEO driver	2*15"NEO driver
Mf Drive	4*6.5"NEO driver	4*6.5"NEO driver	
Hf Drive	3*3"NEO-CP driver	2*3"NEO-CP driver	
Connectors			
Paralleled Neutrik Speakon	2*8-PA-COM	2*8-PA-COM	2*8-PA-COM
Enclosure Material	Multilayer plywood	Multilayer plywood	Multilayer plywood
Cabinet Finish			
Hoisting Set	Special crane accessories	Special crane accessories	Special crane accessories
Dimensions(hxwx d)	1342 x 438 x 520 mm	1338 x 354 x 400 mm	1342 x 438 x 520 mm
Weight(kg)	108Kg	56Kg	83Kg

► The application case



Sound is a profound science. We believe that the more people know about sound science, the more the industry will benefit. We have accumulated rich experience in this industry for many years and would like to share with you. In fact, we have been producing and engineering wire array speakers since 2002. And after many years of development, we continue to thrive. This has exceeded the expectations of our customers, but also in line with our style: Aim for better and keep bringing surprises —KHPRO.

► Introduction

Features:

Waveform technology sound amplification system, excellent remote projection capability, high definition, precise predictability. Multilayer birch plywood box, suitable for flow performance and fixed installation. Special adjustable data for digital processors. Complete bending line source array adjustable hoist cover.

Application:

Bar amplification, concerts, theater, indoor and outdoor performances, fixed installation, indoor hall stadium.

K-3



KARA



Sb18



► Technical Specifications

Rated Power Aes	800W/220W	450W/80W	600W
Peak Power	2200W	1500W	1200W
Nominal Impedance	8Ω	8Ω	8Ω
Frequency Response(+/-3db)	42Hz-19KHz -3dB	60Hz-18KHz -3dB	35Hz-120Hz -3dB
Sensitivity(2.83/1m)	102dB	104dB	98dB
Maximum Sp1 Continuous	136dB	132dB	128dB
Maximum Sp1 Peak	143dB	138dB	133dB
Dispersion -6db			
Horizontal	70/90/110	110	
Vertical	0.25-10	10	
Drive Specification			
Lf Drive	2*12"NEO driver	2*8"NEO driver	1*18"NEO driver
Mf Drive			
Hf Drive	1*4"NEO-CP driver	1*3"NEO-CP driver	
Connectors			
Paralleled Neutrik Speakon	2*NL4MP	2*NL4MP	2*NL4MP
Enclosure Material	Multilayer plywood	Multilayer plywood	Multilayer plywood
Cabinet Finish			
Hoisting Set			
Dimensions(hxwx d)	Special crane accessories 357 x 950 x 403 mm	Special crane accessories 730 x 250 x 482 mm	Special crane accessories 750 x 540 x 707 mm
Weight(kg)	43Kg	25Kg	48Kg



Sound is a profound science. We believe that the more people know about sound science, the more the industry will benefit. We have accumulated rich experience in this industry for many years and would like to share with you. In fact, we have been producing and engineering wire array speakers since 2002. And after many years of development, we continue to thrive. This has exceeded the expectations of our customers, but also in line with our style; Aim for better and keep bringing surprises --KHPRO.

► Introduction

Features:

Waveform technology sound amplification system, excellent remote projection capability, high definition, precise predictability. Multilayer birch plywood box, suitable for flow performance and fixed installation. Special adjustable data for digital processors. Complete bending line source array adjustable hoist cover.

Application:

Bar amplification, concerts, theater, indoor and outdoor performances, fixed installation, indoor hall stadium.

A15



Ks21



Ks28



► Technical Specifications

Rated Power Aes	625W	2500W	2000W
Peak Power	1800W	6000W	6000W
Nominal Impedance	8 Ω	4 Ω	4 Ω
Frequency Response (+/-3db)	50Hz-18KHz -3dB	32Hz-100Hz -3dB	30Hz-100Hz -3dB
Sensitivity(2.83/1m)	106dB	103dB	95dB
Maximum Sp1 Continuous	138dB	138dB	133dB
Maximum Sp1 Peak	140dB	140dB	142dB
Dispersion -6db			
Horizontal	70/100/非对称90	Omni-directional	Omni-directional
Vertical	10/30		
Drive Specification			
Lf Drive	15"NEO driver	1*21"NEO driver	2*18"NEO driver
Mf Drive			
Hf Drive	1.4"NEO CP driver		
Connectors			
Paralleled Neutrik Speakon	2*NL4MP	2*NL4MP	2*NL4MP
Enclosure Material	Multilayer plywood	Multilayer plywood	Multilayer plywood
Cabinet Finish			
Hoisting Set	Special crane accessories	Special crane accessories	Special crane accessories
Dimensions (hwxwd)	762 x 424 x 494 mm	762 x 628 x 569 mm	1342 x 565 x 702 mm
Weight (kg)	33Kg	49Kg	88Kg

► The application case



Sound is a profound science. We believe that the more people know about sound science, the more the industry will benefit. We have accumulated rich experience in this industry for many years and would like to share with you. In fact, we have been producing and engineering wire array speakers since 2002. And after many years of development, we continue to thrive. This has exceeded the expectations of our customers, but also in line with our style; Aim for better and keep bringing surprises --KHPRO.

► Introduction

Features:

Waveform technology sound amplification system, excellent remote projection capability, high definition, precise predictability. Multilayer birch plywood box, suitable for flow performance and fixed installation. Special adjustable data for digital processors. Complete bending line source array adjustable hoist cover.

Application:

Bar amplification, concerts, theater, indoor and outdoor performances, fixed installation, indoor hall stadium.

X15



SYVA



SYVA-LOW



► Technical Specifications

Rated Power Aes	500W	750W	800W
Peak Power	1000W	1500W	2000W
Nominal Impedance	8Ω	8Ω	4Ω
Frequency Response (+/-3db)	60Hz-18KHz	90Hz-19KHz	30Hz-120Hz
Sensitivity(2.83/1m)	102dB	106dB	98dB
Maximum Sp1 Continuous	138dB	138dB	130dB
Maximum Sp1 Peak		142dB	146dB
Dispersion -6db			
Horizontal	60	140	
Vertical	40	26	
Drive Specification			
Lf Drive	1*15"Nd driver	6*5"NEO driver	2*12"NEO driver
Mf Drive			
Hf Drive	1*3"Nd-CP driver	3*1.75"NEO CP driver	
Connectors			
Paralleled Neutrik Speakon	2*NL4MP	2*NL4MP	2*NL4MP
Enclosure Material	Multilayer plywood	Multilayer plywood	Multilayer plywood
Cabinet Finish			
Hoisting Set	Special crane accessories	Special crane accessories	Special crane accessories
Dimensions (hwxwd)	580 x 5430 x 375 mm	209 x 144 x 1304 mm	350 x 334 x 849 mm
Weight (kg)	20Kg	20Kg	29Kg

► The application case



Sound is a profound science. We believe that the more people know about sound science, the more the industry will benefit. We have accumulated rich experience in this industry for many years and would like to share with you. In fact, we have been producing and engineering wire array speakers since 2002. And after many years of development, we continue to thrive. This has exceeded the expectations of our customers, but also in line with our style; Aim for better and keep bringing surprises —KHPRO.

► Introduction

Features:

Waveform technology sound amplification system, excellent remote projection capability, high definition, precise predictability. Multilayer birch plywood box, suitable for flow performance and fixed installation. Special adjustable data for digital processors. Complete bending line source array adjustable hoist cover.

Application:

Bar amplification, concerts, theater, indoor and outdoor performances, fixed installation, indoor hall stadium.

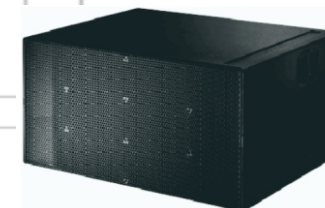
V8/V12



V-SUB

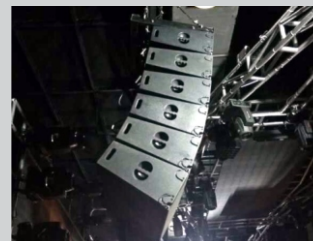


B22



► Technical Specifications

Rated Power Aes	500W	800W	1000W
Peak Power	2000W	1600W	4000W
Nominal Impedance	8Ω	8Ω	4Ω
Frequency Response(+/-3db)	70Hz-18KHz -3dB	37Hz-150Hz -3dB	37Hz-90Hz -3dB
Sensitivity(2.83/1m)	100dB	100dB	96dB
Maximum Sp1 Continuous	132dB	131dB	136dB
Maximum Sp1 Peak	149dB	138dB	140dB
Dispersion -6db			
Horizontal	80/120		
Vertical	0-14		
Drive Specification			
Lf Drive	2*10"NEO driver	2*18"NEO driver	2*18"NEO driver
Mf Drive	1*8"NEO driver	1*12"NEO driver	
Hf Drive	2*1.4"NEO-CP driver		
Connectors			
Paralleled Neutrik Speakon	2*NL4MP	2*NL4MP	2*NL4MP
Enclosure Material	Multilayer plywood	Multilayer plywood	Multilayer plywood
Cabinet Finish			
Hoisting Set	Special crane accessories	Special crane accessories	Special crane accessories
Dimenions (hxxwxd)	310 x 700 x 460 mm	606 x 700 x 728 mm	585 x 920 x 1160 mm
Weight(kg)	34Kg	62Kg	98Kg



Sound is a profound science. We believe that the more people know about sound science, the more the industry will benefit. We have accumulated rich experience in this industry for many years and would like to share with you. In fact, we have been producing and engineering wire array speakers since 2002. And after many years of development, we continue to thrive. This has exceeded the expectations of our customers, but also in line with our style; Aim for better and keep bringing surprises --KHPRO.

► Introduction

Features:

Waveform technology sound amplification system, excellent remote projection capability, high definition, precise predictability. Multilayer birch plywood box, suitable for flow performance and fixed installation. Special adjustable data for digital processors. Complete bending line source array adjustable hoist cover.

Application:

Bar amplification, concerts, theater, indoor and outdoor performances, fixed installation, indoor hall stadium.

Q1/Q7



Q-SUB



T24N



► Technical Specifications

Rated Power Aes	600W	800W	1000W/200W
Peak Power	1800W	1600W	2000W
Nominal Impedance	16Ω	8Ω	8Ω
Frequency Response(+/-3db)	100Hz-16KHz -3dB	40Hz-160Hz -3dB	70Hz-16KHz -3dB
Sensitivity(2.83/1m)	100dB	100dB	100dB
Maximum Sp1 Continuous	130dB	128dB	131dB
Maximum Sp1 Peak	134dB	132dB	140dB
Dispersion -6db			
Horizontal	90		60
Vertical	15-30		40
Drive Specification			
Lf Drive	2*10"NEO driver	2*18" driver	2*12"NEO driver
Mf Drive			
Hf Drive	2*1.4" CP driver		1*1.4" CP driver
Connectors			
Paralleled Neutrik Speakon	2*NL4MP	2*NL4MP	2*NL4MP
Enclosure Material	Multilayer plywood	Multilayer plywood	Multilayer plywood
Cabinet Finish			
Hoisting Set	Special crane accessories	Special crane accessories	Special crane accessories
Dimenions (hxwx d)	308 x 580 x 410 mm	493 x 580 x 668 mm	706 x 440 x 440 mm
Weight(kg)	22Kg	42Kg	33Kg

► The application case



Sound is a profound science. We believe that the more people know about sound science, the more the industry will benefit. We have accumulated rich experience in this industry for many years and would like to share with you. In fact, we have been producing and engineering wire array speakers since 2002. And after many years of development, we continue to thrive. This has exceeded the expectations of our customers, but also in line with our style; Aim for better and keep bringing surprises —KHPRO.

► Introduction

Features:

The horn design of hyperbolic reflection wave source enables multiple array sound waves to be consistent. All rubidium magnetic monomer high power output, versatile flexible collocation.

Application:

Concert hall, bar, indoor fixed installation sound reinforcement/small stage monitoring, main sound reinforcement and auxiliary display.

Ac15



Ac25



5XT



► Technical Specifications

Rated Power Aes	150W	225W	100W
Peak Power	300W	900W	300W
Nominal Impedance	8 Ω	16 Ω	16 Ω
Frequency Response (+/-3db)	90Hz-16KHz -3dB	90Hz-18KHz -3dB	96Hz-18KHz -3dB
Sensitivity(2.83/1m)	102dB	106dB	102dB
Maximum Sp1 Continuous	128dB	128dB	121dB
Maximum Sp1 Peak			
Dispersion -6db			
Horizontal	90	90	110
Vertical	90	90	110
Drive Specification			
Lf Drive	1*5.25" cone driver	2*5.25" cone driver	1*5" NEO driver
Mf Drive			
Hf Drive	1*1"Nd-CP driver	1*1"Nd-CP driver	1*1"NEO CP driver
Connectors			
Paralleled Neutrik Speakon	2*NL4MP	2*NL4MP	2*NL4MP
Enclosure Material	Multilayer plywood	Multilayer plywood	Multilayer plywood
Cabinet Finish			
Hoisting Set	Special crane accessories	Special crane accessories	Special crane accessories
Dimensions (hwxwd)	242 x 151 x 178 mm	377 x 151 x 178 mm	165 x 165 x 165 mm
Weight (kg)	4.5Kg	7.5Kg	3.5Kg

► The application case



Sound is a profound science. We believe that the more people know about sound science, the more the industry will benefit. We have accumulated rich experience in this industry for many years and would like to share with you. In fact, we have been producing and engineering wire array speakers since 2002. And after many years of development, we continue to thrive. This has exceeded the expectations of our customers, but also in line with our style: Aim for better and keep bringing surprises —KHPRO.

► Introduction

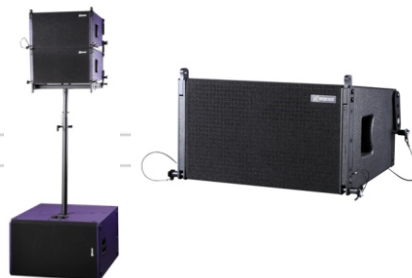
Features:

Waveform technology sound amplification system, excellent remote projection capability, high definition, precise predictability. Multilayer birch plywood box, suitable for flow performance and fixed installation. Special adjustable data for digital processors. Complete bending line source array adjustable hoist cover.

Application:

Bar amplification, concerts, theater, indoor and outdoor performances, fixed installation, indoor hall stadium.

VERA10



S15

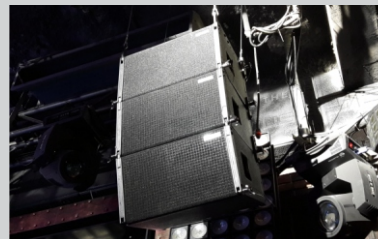
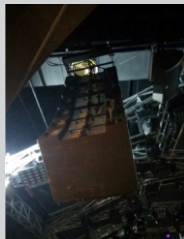


S30



► Technical Specifications

Rated Power Aes	400W/100W	500W	1600W
Peak Power	1000W	1000W	3000W
Nominal Impedance	16Ω	8Ω	4Ω
Frequency Response(+/-3db)	70Hz-16KHz -3dB	40Hz-150Hz -3dB	35Hz-200Hz -3dB
Sensitivity(2.83/1m)	100dB	93dB	95dB
Maximum Sp1 Continuous	130dB	123dB	131dB
Maximum Sp1 Peak	136dB	130dB	140dB
Dispersion -6db			
Horizontal	120		Omni-directional
Vertical	10		
Drive Specification			
Lf Drive	1*10"NEO driver	1*15"NEO driver	2*15"NEO driver
Mf Drive			
Hf Drive	2*1"NEO-CP driver		
Connectors			
Paralleled Neutrik Speakon	2*NL4MP	2*NL4MP	2*NL4MP
Enclosure Material	Multilayer plywood	Multilayer plywood	Multilayer plywood
Cabinet Finish			
Hoisting Set	Special crane accessories	Special crane accessories	Special crane accessories
Dimensions(hxwx d)	275 x 500 x 355 mm	500 x 446 x 560 mm	706 x 446 x 800 mm
Weight(kg)	21Kg	28Kg	48Kg



Sound is a profound science. We believe that the more people know about sound science, the more the industry will benefit. We have been in this business for many years, both for entertainment and fixed installations and large rental systems. We have been reflecting on our success and are happy to share. In fact, education and training has always been the company's philosophy.

► Introduction

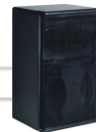
Features:

The horn design of hyperbolic reflection wave source enables multiple array sound waves to be consistent. All rubidium magnetic monomer high power output, versatile flexible collocation.

Application:

Concert hall, bar, indoor fixed installation sound reinforcement/small stage monitoring, main sound reinforcement and auxiliary supplementary sound frequency display.

S805/S830



Ls18



Ls600



► Technical Specifications

Rated Power Aes	300W	1200W	600W
Peak Power	600W	2000W	1200W
Nominal Impedance	16Ω	8Ω	6Ω
Frequency Response (+/-3db)	80Hz-18KHz	40Hz-120Hz	40Hz-110Hz
Sensitivity (2.83/1m)	-3dB	-3dB	-3dB
Maximum Sp1 Continuous	100dB	96dB	95dB
Maximum Sp1 Peak	130	128	
Dispersion -6db	132	132	
Horizontal	120°	Omni-directional	Omni-directional
Vertical	5-30°		
Drive Specification			
Lf Drive	1*8"NEO driver	18"NEO driver	15"cone driver
Mf Drive			
Hf Drive	1*1"NEO-CP driver		
Connectors			
Paralleled Neutrik Speakon	2*NL4MP	2*NL4MP	2*NL4MP
Enclosure Material	Multilayer plywood	Multilayer plywood	Multilayer plywood
Cabinet Finish			
Hoisting Set	Special crane accessories	Special crane accessories	Special crane accessories
Dimensions (hxwx d)	406 x 250 x 219 mm	510 x 675 x 775 mm	435 x 688 x 528 mm
Weight (kg)	13Kg	55Kg	30Kg

► The application case



Sound is a profound science. We believe that the more people know about sound science, the more the industry will benefit. We have been in this business for many years, both for entertainment and fixed installations and large rental systems. We have been reflecting on our success and are happy to share. In fact, education and training has always been the company's philosophy.

► Introduction

Features:

The horn design of hyperbolic reflection wave source enables multiple array sound waves to be consistent. All rubidium magnetic monomer high power output, versatile flexible collocation.

Application:

Concert hall, bar, indoor fixed installation sound reinforcement/small stage monitoring, main sound reinforcement and auxiliary supplementary sound frequency display.

PS10-R2



PS15-R2

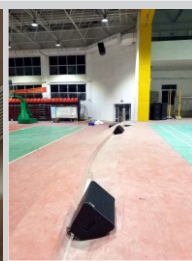
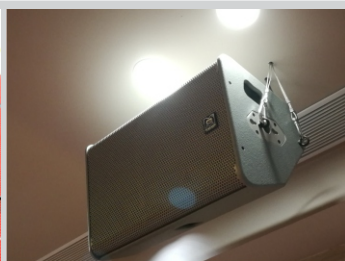


PS12AP



► Technical Specifications

Rated Power Aes	200W	500W	400W
Peak Power	400W		
Nominal Impedance	6Ω	6Ω	8Ω
Frequency Response(+/-3db)	100Hz-16KHz -3dB	60Hz-16KHz -3dB	65Hz-16KHz -3dB
Sensitivity(2.83/1m)	100dB	102dB	100dB
Maximum Sp1 Continuous			
Maximum Sp1 Peak			
Dispersion -6db		100-50° H x 55° V -6dB points	
Horizontal	100-50°		55°
Vertical	55°		100-50°
Drive Specification			
Lf Drive	1*10"cone driver	15"cone driver	12"cone driver
Mf Drive			
Hf Drive	1*1"exit compression driver	1.4"exit compression driver	1.4"exit compression driver
Connectors			
Paralleled Neutrik Speakon	2*NL4MP	2*NL4MP	1*cable
Enclosure Material	Multilayer plywood	Multilayer plywood	Multilayer plywood
DSP&POWER			48KHZ sampling DSP & 1*600W AP
Hoisting Set	Special crane accessories	Special crane accessories	Special crane accessories
Dimensions(hxwx d)	515 x 316 x 277 mm	675 x 434 x 368mm	555 x 360 x 330mm
Weight(kg)	15Kg	29Kg (63.8 lbs)	25Kg



KHPRO believes we have benefited from direct support and participation in the music community. By communicating with our customers and engineers, we were able to keep abreast of the latest KTV trends and identify the sound requirements pursued by the industry, so that we could know how to make distinctive products to meet these requirements. Let you try once will not forget!

► Introduction

Features:

Compact passive system, patent design broadband high power output and flexible collocation

Application:

Concert hall, bar, indoor fixed installation sound reinforcement /small stage monitoring, main sound reinforcement and auxiliary supplementary sound frequency display.

XD15



Sx218



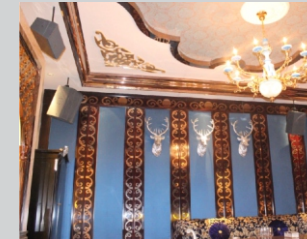
CMAx 4112



► Technical Specifications

Rated Power Aes	500W	1200W	400W
Peak Power	1200W	2000W	1600W
Nominal Impedance	8Ω	4Ω	8Ω
Frequency Response (+/-3db)	80Hz-16KHz -3dB	42Hz-180Hz -3dB	60Hz-18KHz -3dB
Sensitivity (2.83/1m)	99dB	100dB	98dB
Maximum Sp1 Continuous	132dB	128dB	130dB
Maximum Sp1 Peak			
Dispersion -6db			
Horizontal	50°		90°
Vertical	80°		70°
Drive Specification			
Lf Drive	1*15" cone driver	2*18" cone driver	1*12" cone driver
Mf Drive			
Hf Drive	1*1.4" compression driver		1*1.75" exit compression driver
Connectors			
Paralleled Neutrik Speakon	2*NL4MP	2*NL4MP	2*NL4MP
Enclosure Material	Multilayer plywood	Multilayer plywood	Multilayer plywood
Cabinet Finish			
Hoisting Set	Special crane accessories	Special crane accessories	Special crane accessories
Dimensions (h*wx*d)	429 x 690 x 414 mm	1049 x 587 x 727 mm	600 x 363 x 406 mm
Weight (kg)	31Kg	82Kg	24.5Kg

► The application case



KHPRO believes we have benefited from direct support and participation in the music community. By communicating with our customers and engineers, we were able to keep abreast of the latest KTV trends and identify the sound requirements pursued by the industry, so that we could know how to make distinctive products to meet these requirements. Let you try once will not forget!

► Introduction

Features:

Compact passive system, patent design broadband high power output and flexible collocation

Application:

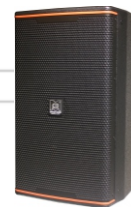
Concert hall, bar, indoor fixed installation sound reinforcement /small stage monitoring, main sound reinforcement and auxiliary supplementary sound frequency display.



KP-9018



KP-6050

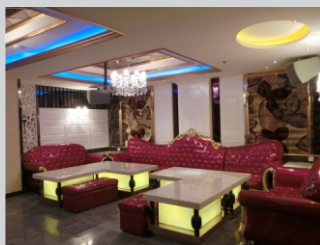


KP-6052



► Technical Specifications

Rated Power Aes	600W	300W	350W
Peak Power	2400W	1200W	1400W
Nominal Impedance	8Ω	8Ω	8Ω
Frequency Response (+/-3db)	35Hz-250Hz -3dB	72Hz-19KHz -3dB	71Hz-19KHz -3dB
Sensitivity(2.83/1m)	95dB	95dB	96dB
Maximum Sp1 Continuous			
Maximum Sp1 Peak			
Dispersion -6db			
Horizontal		70°	70°
Vertical		80°	60°
Drive Specification			
Lf Drive	18" ferrite driver	10" ferrite driver	12" ferrite driver
Mf Drive			
Hf Drive		1.5" ND driver	2" ND driver
Connectors			
Paralleled Neutrik Speakon	2*NL4MP	2*NL4MP	2*NL4MP
Enclosure Material			
Cabinet Finish			
Hoisting Set			
Dimensions(hxwx d)	540 x 600 x 700 mm	524 x 300 x 340 mm	600 x 350 x 382 mm
Weight (kg)	38.8Kg	14.5Kg	18.6Kg



KHPRO understands that different models of speakers need different timbre depending on the occasion they are used! Amplifiers are very different because of the circuit, and we have benefited from years of experience. By communicating with users and engineers, we can learn the secrets. To identify the sound requirements pursued by various sectors of the industry, so that we can make distinctive products to meet these needs!

► Introduction

Features:

- * ADI 64bit floating point DSP (96KHz/48KHz) is adopted.
- * unique signal input matrix.
- * special front panel 4.3-inch LCD touch control panel.
- * unique 2×RJ45(Ethernet port) input/junction.
- * top sound quality, TD class analog amplifier circuit.
- * the output channel is provided with a seven-stage parameter EQ.
- * the output channel is equipped with a full-function compressor.
- * the output channel is equipped with 0-80ms delay device.
- * can store 16 modes.
- * the machine has a full-function menu, which can be set through the PC interface.

Application:

Karaoke, indoor and outdoor fixed installation sound reinforcement, mobile performance and background music Audio presentation, etc.

D-SERIES



► Technical Specifications

D-SERIES

MODEL	D4100	D4130	D4160
POWER (8Ω) W	4*1000	4*1300	4*1600
(4Ω) W	4*1700	4*2200	4*2600
weight	16Kg	16.5Kg	17Kg
Total harmonic distortion	<0.08%		
Frequency response	20Hz-20kHz: <0.03%		
S/N(A weight)	>100dB		
Slew rate	>30V/us		
Damping coefficient	200-1000		
Input sensitivity	0-9dB		
input impedance	30KΩbalance		
Cooling air	convection by the former to the later		
Special features	built-in DSP, many machine online, digital transmission		
Power specifications	160-260 - v 50 to 60 hz		
Size	483 x 88 x 455 mm (2 u)		

► Technical Specifications

CI-SERIES

MODEL	CI904	CI1304	CI1604
POWER(8Ω)W	900W*4	1300W*4	1600W*4
(4Ω)W	1300W*4	2100W*4	2300W*4
weight	34KG	39KG	42KG
Frequency response	20Hz-20kHz(+0/-0.5dB)		
THD+N	0.2%		
S/N rate	90dB		
Damping Factor	>100		
Slew Rate	>10V/us		
Input Sensitivity	0,775V		
Output circuitry	Class I		

Front panel indicator Front panel indicator: Clip, protection, signal indicate, power indicate

Rear panel indicator: Bridge indicate

Product dimension(mm) 483x493x133 (3U)

CI-SERIES



► Introduction

CI series focus on accurate sound replay, stable performance and fashion appearance design.

With low energy consumption, excellent sound quality, and high stability and reliability very stable and reliable.

Technology Highlights

*Front panel adopting backlighting design, makes the function indicators can be seen clearly even at night time.

* Adopt high efficiency patent Class-I topology circuitry. Class-I has obvious advantages in wave reduction and dynamic energy consumption

► The application case



KHPRO understands that different models of speakers need different timbre depending on the occasion they are used! Amplifiers are very different because of the circuit, and we have benefited from years of experience. By communicating with users and engineers, we can learn the secrets. To identify the sound requirements pursued by various sectors of the industry, so that we can make distinctive products to meet these needs!

M-SERIES

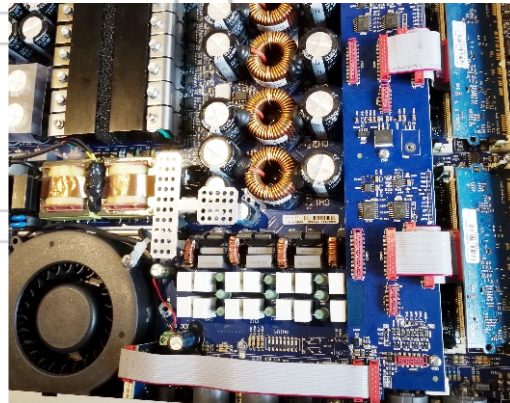
► Introduction

Features:

- * compact 1U body design
- * patented technology legend sound
- * high efficiency output, low temperature operation
- * class D magnification technology
- * comprehensive protection circuit design

Application:

Mobile performance, indoor and outdoor installation sound reinforcement, stage monitoring, meeting and background music.



M50Q HDSP



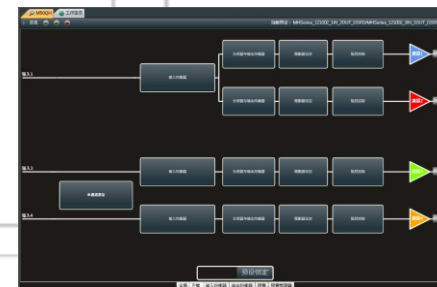
M30D



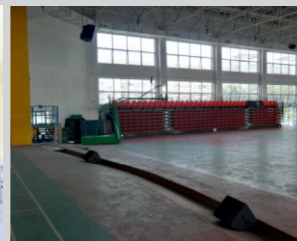
MA4.10Q

► Technical Specifications

MODE	M50QHDSP	M70QHDSP	M30D	K3
POWER (8Ω) W	4*750W	4*1000W	2*900W	2*1400W
(4Ω) W	4*1250W	4*1600W	2*1500W	2*2600W
Weight	7.6Kg	7.8Kg	7.5Kg	8Kg
Total harmonic distortion			1kHz: <0.3%	
Frequency response			20Hz-20kHz: <0.03%	
S/N			>106dB	
Conversion rate			≥50V/us	
Channel segregation			>70dB@1KHz	
Damping coefficient			>5000 @ 100Hz	
Input sensitivity			1.94 /8dBu	
THD+N			< 0.05% @ 1/2 full power	
Input impedance			10KΩbalance	
Cooling air			convection by the former to the later	
IMD			<0.02%, 8Ω@1W	
Power specifications			200-240V 50-60Hz	
Size			483 x 44.45 x 358 mm (1U)	



DSP system software



KHPRO understands that different models of speakers need different timbre depending on the occasion they are used! Amplifiers are very different because of the circuit, and we have benefited from years of experience. By communicating with users and engineers, we can learn the secrets. To identify the sound requirements pursued by various sectors of the industry, so that we can make distinctive products to meet these needs!

D-SERIES

MX-SERIES

► Introduction

Features:

- * special front panel 4-inch LCD touch control panel.
- * unique 2×RJ45 (Ethernet port) input/junction.
- * class D amplifier circuit.
- * the output channel is provided with 8-section parameter EQ.
- * the output channel is equipped with a full-function compressor.
- * the output channel is equipped with 0-80ms delay device.
- * can store 16 modes.
- * the machine has a full-function menu, which can be set through the PC interface.

Application:

Karaoke, indoor and outdoor installation sound reinforcement, mobile performance and background music audio display.



► Introduction

Features:

- * compact 2U body design
- * optimize the class-h line
- * perfect protection design
- * 1.4v / 0.775v input sensitivity selection
- * double tunnel radiator with variable speed fan

Application:

Karaoke, indoor fixed installation sound reinforcement/small stage monitoring sound reinforcement, meeting and background music sound reinforcement.



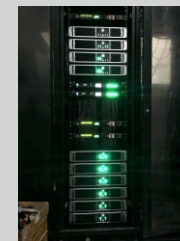
► Technical Specifications

MODEL	DSP4. 6	DSP4. 9	DSP4. 12
POWER (8Ω) W	4*600	4*900	4*1200
(4Ω) W	4*1200	4*1800	4*2400
Weight	13Kg	13.5Kg	13.8Kg
Total harmonic distortion		<0.1%	
Frequency response		20Hz-20kHz: <0.03%	
S/N(A weight)		>110dB	
Slew rate		>30V/us	
Damping coefficient		>1000	
Input sensitivity		1.22V	
input impedance		20KΩbalance	
Cooling air		convection by the former to the later	
Special features		The built-in DSP, multimachine online, digital transmission	
Power specifications		180-240V 50 to 60 hz	
Size		483 x 88 x 455 mm (2 u)	

► Technical Specifications

MODEL	MX-7000	MX-9000	MX-12000
POWER (8Ω) W	4*600	2*800	2*1100
(4Ω) W	4*1200	2*1200	2*1600
weight	14Kg	18.5Kg	19.8Kg
Total harmonic distortion		<0.1%	
Frequency response		20Hz-20kHz: <0.03%	
S/N(A weight)		>110dB	
Slew rate		>30V/us	
Damping coefficient		>1000	
Input sensitivity		0.775/1.4V	
input impedance		20KΩbalance	
Cooling air		convection by the former to the later	
Power specifications		180-240V 50 to 60 hz	
Size		483 x 88 x 294 mm (2 u)	

► The application case



KHPRO understands that different models of speakers need different timbre depending on the occasion they are used! Amplifiers are very different because of the circuit, and we have benefited from years of experience. By communicating with users and engineers, we can learn the secrets. To identify the sound requirements pursued by various sectors of the industry, so that we can make distinctive products to meet these needs!

K-10/K-60

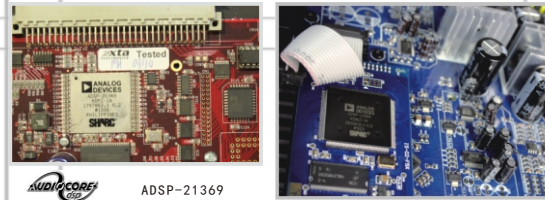
Introduction

Features:

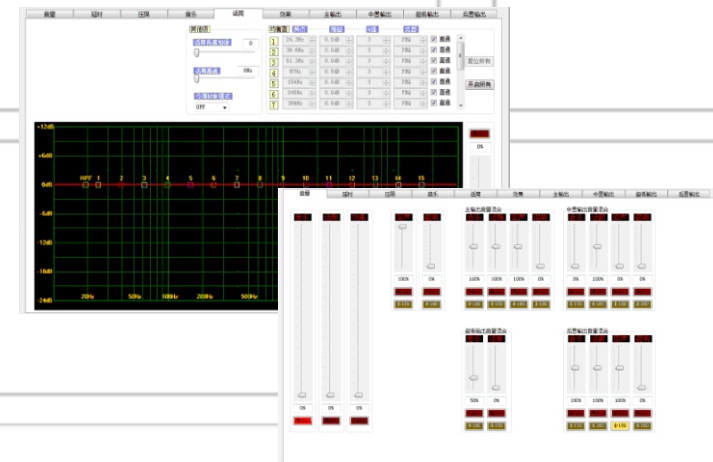
- * AD132 bit floating point DSP(same as XTA448) and 24 bit high performance AD/DA.
- * unique MUSIC channel has 7 FIR EQ.
- * unique wider band of pure digital fiber input.
- *MIC channel has 15 segments of parameter EQ.
- * the main output is provided with a 5-stage parameter EQ.
- * middle/rear/low frequency outputs are set with 3-stage parameter EQ.
- * unique full digital frequency shift scheme, more effective noise elimination, and can choose OFF/ON.
- * can store 16 modes.
- * microphone output, main output, medium output, ultra-low sound output and rear output are equipped with voltage limit and delay function.
- * unique FIR ECHO technology, series of 15 effect units, the effect is more moving.
- * the machine has a full-function menu, which can be set through the PC interface.
- * can control the machine and call out the scene mode through the computer interface.

Application:

Karaoke, indoor and outdoor fixed installation sound reinforcement, conference and exhibition and background music audio presentation.



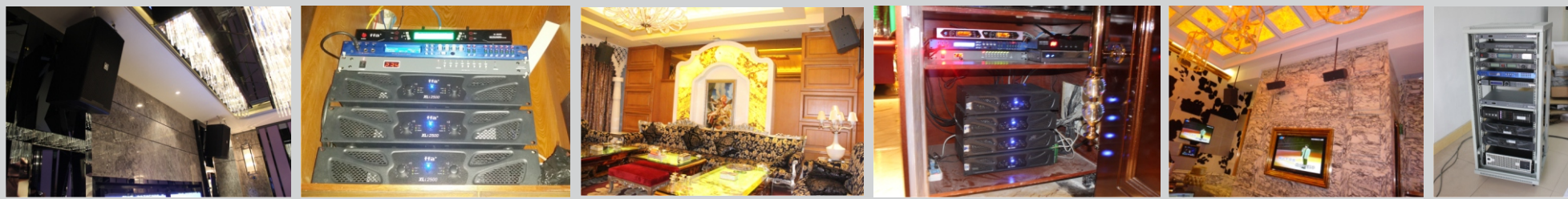
So computer control software interface



PC debugging software interface

Technical Specifications

Input	
Maximum input level	4V (RMS)
Music Channel gain	MAX:12db
microphone sensitivity	64MV (OUT:4V)
Input channel	MIC:3CH
	MUSIC:simulation 1CH/digital 1CH
Output	
maximum output level	4V (RMS)
Output channel	2/6CH
other parameters	
S/N	>86dB
Input voltage	220V-240V 50HZ
Size	483×218.5×47.5mm
Weight	3.0Kg



KHPRO believes we have benefited from direct support and participation in the music community. By communicating with our customers and engineers, we were able to keep abreast of the latest KTV trends and identify the sound requirements pursued by the industry, so that we could know how to make distinctive products to meet these requirements. Let you try once will not forget!

► Introduction

Features:

- * compact multi-channel DSP amplifier backplate
- * optimize class D amplifying circuit* perfect protection design
- * full-featured DSP data selection
- * double tunnel radiator with variable speed fan

Application:

Mobile performance, indoor fixed installation sound reinforcement /small stage monitoring sound reinforcement, meeting and background music sound reinforcement.

AP-SERIES



AP1-600



AP3-124

U-969



U-1024



► Technical Specifications

MODEL	AP1-600	AP3-124
POWER (8Ω) W	1*600	2*400+1200
(4Ω) W	1*900	2*750+2000
Weight	3.6Kg	6Kg
Input	1*calderon, 1*volume, 1*USB	1*calderon, 2*volume, 1*USB
Output	1*cable OUT	3*cableOUT, 2*NL4
Size	345*155*95MM	360*280*95MM
DSP		
Sampling frequency		48KHZ
Frequency response		10Hz-40kHz: <0.5%
Dynamic range		>110dB
Maximum delay		20ms
Gain		0-60dB
EQ		INPUT: 6, OUTPUT: 6
parameter	Q:0.2 -36, frequency:20 hz-20khz;biggest gain:+ 12 db, -24db delay:370ms, Crossover:Linkwitz-Riley 12/18/24dB compression:Threshold +0dBu to -19dBu	

► Technical Specifications

Frequency range	730-870MHz
Tunable channel	200
Oscillation mode	(PLL)
Receiving mode	Secondary superheterodyne frequency conversion
Receiving sensitivity	-95dBm -65dBm
Diversity means	Double-tuned diversity automatically selected
Frequency response	40-18000Hz
Harmonic distortion	≤0.5%
S/N	≥100dB
Audio output	equilibrium output and unbalanced output
Transmission power	Low:3mW, High:30mW
Modulation method	(FM)
Battery specification	AA
Power supply specifications	200V-240V 50-60Hz
Power consumption	≤10W
Size	483x260x44.5 (1U)
Weight	2.6Kg

► The application case



KHPRO believes we have benefited from direct support and participation in the music community. By communicating with our customers and engineers, we were able to keep abreast of the latest KTV trends and identify the sound requirements pursued by the industry, so that we could know how to make distinctive products to meet these requirements. Let you try once will not forget!

► Introduction

Features:
 * complete solution for audio processor, capable of providing excellent sound quality. It is based on DSP technology soundBox processor, high performance AKM, A/D, AK5392, 3 pieces 24-bit high precision DSP.
 *2/4 channel input with EQ, voltage limit and delay, 4/8 channel output with frequency division filtering, EQ, voltage limit and delay, etc.
 Application:
 Indoor and outdoor fixed installation sound reinforcement system meeting and exhibition sound display.

DP24/DP26/DP28/DP48



1015K/1008K



KP-8



► Technical Specifications

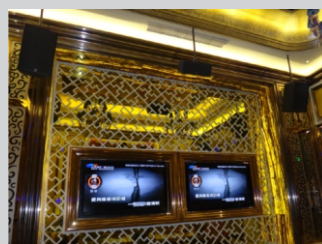
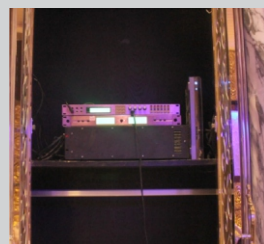
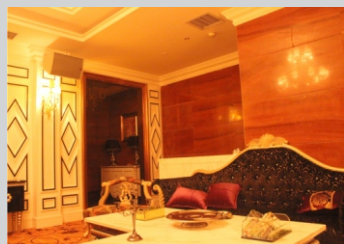
Frequency response	20-20KHz
Input CH	2CH/4CH
Input time delay	YES
Input EQ	15 paragraph
Input parameters of the filter	8
Input filtering correction system	10
Output CH	4CH/6CH/8CH
Output filter slope	12, 18, 24, 48DB/OCT
output polarity	YES
output filter parameters	9
output filter correction system	YES
output amplitude limit	YES
Output dynamic maximum peak	YES
Digital connection	AES/EBU
power supply specifications	240V 50-60Hz
Size	483x260x44.5 (1U)
Weight	3.6Kg

► Technical Specifications

Power conditions	Single phase 3 line
Connect the device	Bare wire
OUT	
Temporal channel	8CH
Can output channe	8CH
Connecting device type	American socket
other parameters	
Maximum current capacity	63A (AC220V)
Sequential control each step interval	1sec
Online information internal pulse control way	control
Online control attachment maximum length	2M
on-line control equipment maximum	10
Online control interface	1/4* TR
Size	483x260x44.5 (1U)
Weight	5.6Kg

► Technical Specifications

Input CH	16CH
Output CH	8CH
Connection mode	calderon
Control mode	Remote /panel
power supply	240V 50-60Hz
Size	483x260x88 (2U)
Weight	6.6Kg



[Http://www.khpro.cn](http://www.khpro.cn)



morgan sound

PROFESSIONAL AUDIO SYSTEM

Kh Professional Audio Electric INC
NO. 1, san- ROAD, Da Sha Tou, Yue Xiu ,Guangzhou.
GD, CHINA
E-mail: khprosound@126.com

