

## New Features In TerraMatch

What's New in Terrasolid v011?

Webinar

15 February 2011

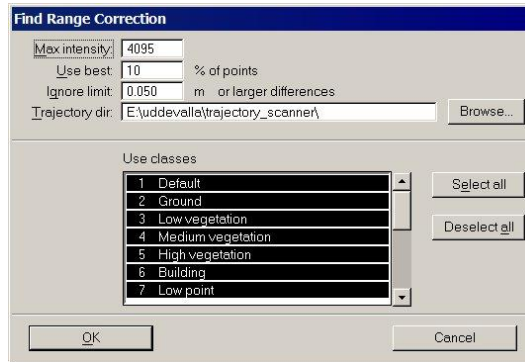
Darrick Wagg  
GeoCue Group  
9668 Madison Blvd., Suite 202  
Madison, AL 35758  
+1 (256) 461-8289  
[support@geocue.com](mailto:support@geocue.com)  
[support.geocue.com](http://support.geocue.com)

## Various Improvements

- Support for GPS standard time
- Support for **Apply** correction macro action
- Support for new TerraScan RAM point format
- Support for Fast Binary file format
  
- Compatibility with PowerMap and PowerCivil

## Find Range Correction

- Solves range corrections for different intensity values
- Requires laser data from smoothly changing hard surface with different intensities:
  - Airport with paint markings for airborne
  - Road with calibration mat for mobile



## Tie line improvements

- More compact RAM storage – can handle a larger data set
- **Position / Delete / By line** menu command
- **Find Tie Line Match** gives a better misalignment solution for mobile system
- **Known xy** and **Known z** tie line types
  - Match mobile data to an orthophoto in xy
  - Match mobile data to airborne LiDAR in elevation