

**Specifications**

Nominal Voltage		2 V
Capacity (25°C)	10HR(1.80V)	800 Ah
	3HR(1.75V)	612Ah
	1HR(1.75V)	452Ah
Dimension	Length	410±2mm (16.14inch)
	Width	175±2mm (6.89inch)
	Height	330±2mm (12.99inch)
	Total Height	367±2mm (14.45inch)
Approx. Weight		48.5kg (106.9lbs)±3%
Terminal type		T10
Internal resistance (Fully charged, 25°C)		Approx. 0.35mΩ
Capacity affected by temperature (10HR)	40°C	102%
	25°C	100%
	0°C	85%
	-15°C	65%
Self-discharge (25°C)	3 month	Remaining Capacity: 91%
	6 month	Remaining Capacity: 82%
	12 month	Remaining Capacity: 65%
Nominal operating temperature		25°C ± 3°C (77°F ± 5°F)
Operating temperature range	Discharge	-15°C ~ 50°C (5°F ~ 122°F)
	Charge	-10°C ~ 50°C (14°F ~ 122°F)
	Storage	-20°C ~ 50°C (-4°F ~ 122°F)
Float charging voltage(25°C)		2.25 to 2.30V Temperature compensation: -3mV/°C
Cyclic charging voltage(25°C)		2.42 to 2.48V Temperature compensation: -5mV/°C
Maximum charging current		160A
Terminal material		Copper
Maximum discharge current		5500A(5 sec.)
Designed floating life(20°C)		20 years

- ◆ Absorbent glass mat technology;
- ◆ Recognized by UL & CE;
- ◆ ABS container.

**Constant Current Discharge Characteristics (A, 25°C)**

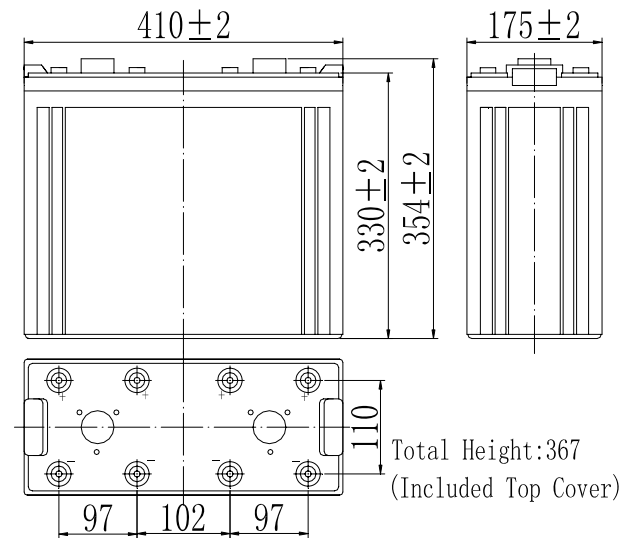
F.V/TIME	15min	30min	60min	2h	3h	4h	5h	6h	8h	10h	20h	24h
1.60V	1080	720	480	292	208	167	145	125	97.9	81.4	42.8	37.1
1.65V	1054	706	473	291	207	166	144	124	97.3	81.3	42.7	37.0
1.70V	1015	684	461	288	205	165	143	123	96.7	81.0	42.5	36.9
1.75V	981	667	452	284	204	164	142	122	96.0	80.6	42.3	36.7
1.80V	929	643	438	276	198	159	138	119	93.1	80.0	42.0	36.4

**Constant Power Discharge Characteristics (Watt, 25°C)**

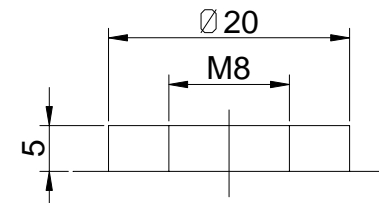
F.V/TIME	15min	30min	60min	2h	3h	4h	5h	6h	8h	10h	20h	24h
1.60V	1976	1346	912	564	408	328	286	246	195	162	85.5	74.5
1.65V	1929	1319	898	561	405	326	284	245	194	162	85.3	74.3
1.70V	1858	1279	876	556	403	324	282	243	192	161	85.1	74.1
1.75V	1795	1248	858	548	400	321	281	241	191	160	84.6	73.7
1.80V	1700	1202	832	534	388	312	272	234	185	159	84.0	73.2

Note: The above characteristics data can be obtained within three charge/discharge cycles.

**Dimensions**

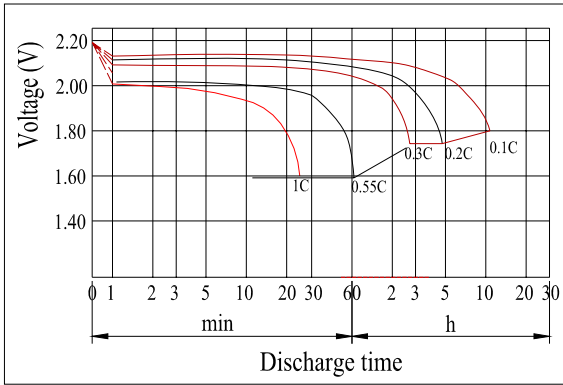


**Terminal**

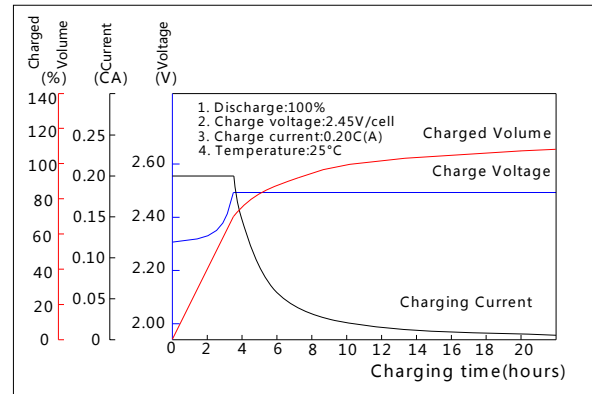


**Terminal T10**

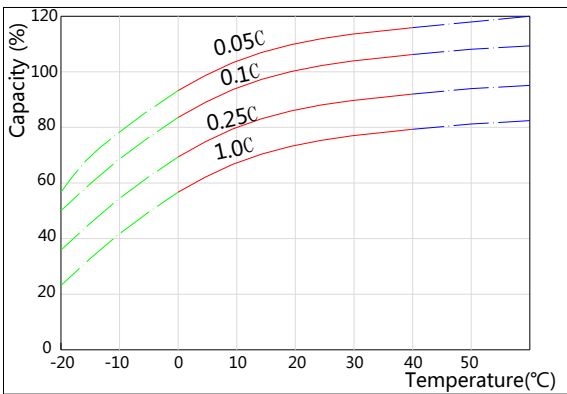
Discharge Characteristics(25°C)



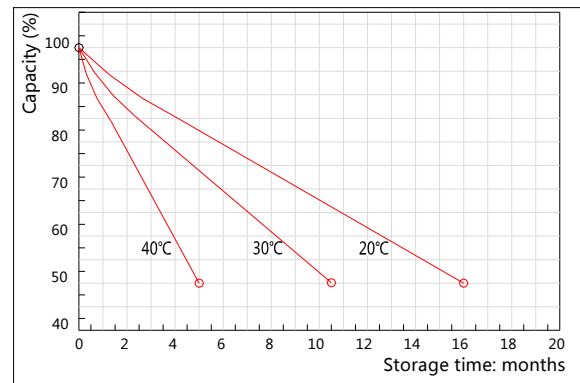
Charging Characteristics(25°C)



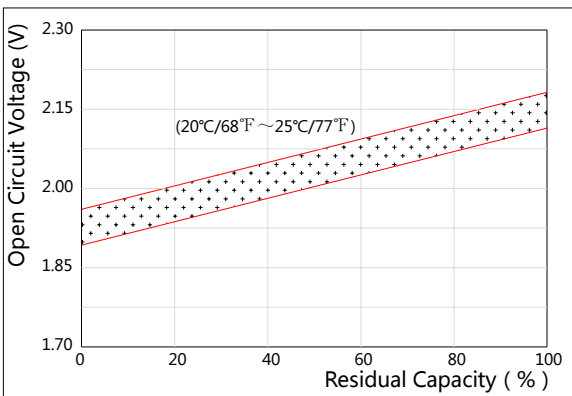
Effect of Temperature on Capacity



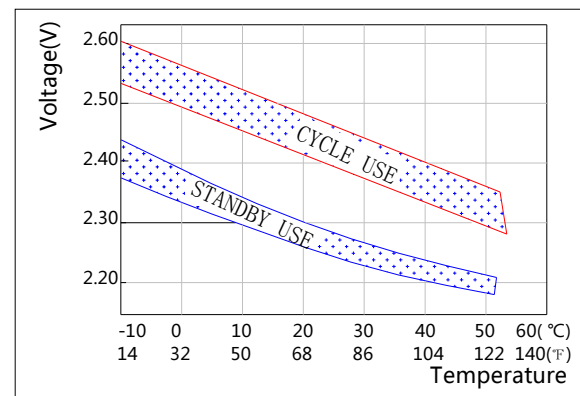
Self-discharge Characteristics



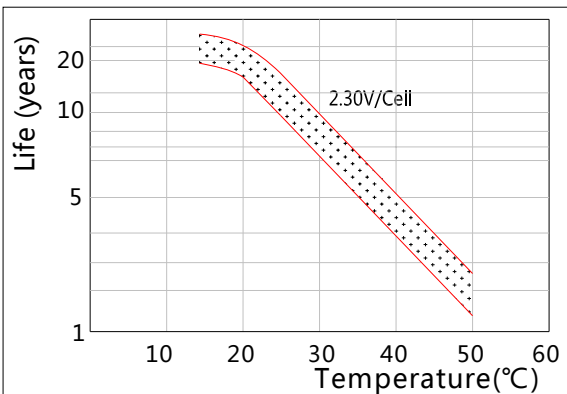
The Relationship for Open Circuit Voltage and Residual Capacity (25°C)



The Relationship for Charging Voltage and Temperature



Floating Life on Temperature



Cycle Life on D.O.D(25°C)

