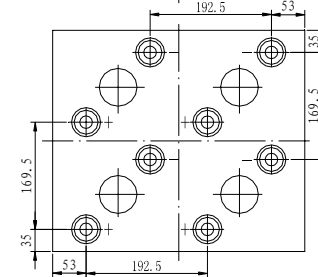
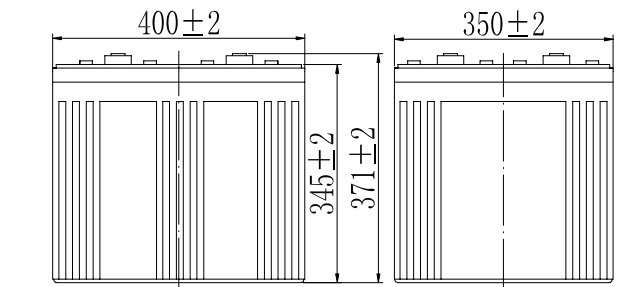


Specifications

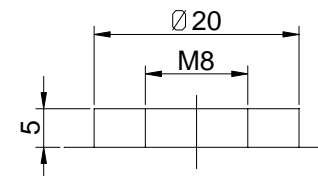
Nominal Voltage		2 V
Capacity (25°C)	10HR(1.80V)	1500 Ah
	3HR(1.75V)	1149Ah
	1HR(1.75V)	847Ah
Dimension	Length	400±2mm (15.75inch)
	Width	350±2mm (13.78inch)
	Height	345±2mm (13.58inch)
	Total Height	382±3mm (15.04inch)
Approx. Weight		91kg (200.6lbs)±3%
Terminal type		T10
Internal resistance (Fully charged, 25°C)		Approx. 0.2mΩ
Capacity affected by temperature (10HR)	40°C	102%
	25°C	100%
	0°C	85%
	-15°C	65%
Self-discharge (25°C)	3 month	Remaining Capacity: 91%
	6 month	Remaining Capacity: 82%
	12 month	Remaining Capacity: 65%
Nominal operating temperature		25°C ± 3°C (77°F ± 5°F)
Operating temperature range	Discharge	-15°C ~ 50°C (5°F ~ 122°F)
	Charge	-10°C ~ 50°C (14°F ~ 122°F)
	Storage	-20°C ~ 50°C (-4°F ~ 122°F)
Float charging voltage(25°C)	2.25 to 2.30V Temperature compensation: -3mV/°C	
Cyclic charging voltage(25°C)	2.42 to 2.48V Temperature compensation: -5mV/°C	
Maximum charging current	300A	
Terminal material	Copper	
Maximum discharge current	9000A(5 sec.)	
Designed floating life(20°C)	20 years	

Dimensions



Total Height:382
(Included Top Cover)

Terminal



Terminal T10

- ◆ Absorbent glass mat technology;
- ◆ Recognized by UL & CE;
- ◆ ABS container.

Constant Current Discharge Characteristics (A, 25°C)

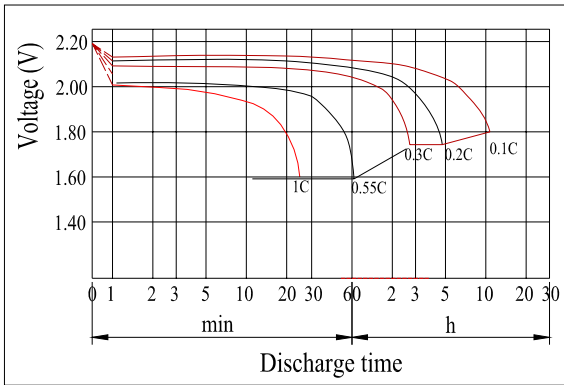
F.V/TIME	30min	60min	2h	3h	4h	5h	6h	8h	10h	20h	24h
1.60V	1350	900	548	390	314	272	234	184	153	80.2	69.5
1.65V	1323	887	545	388	312	271	233	183	152	80.0	69.3
1.70V	1283	864	540	385	310	269	231	181	152	79.8	69.1
1.75V	1251	847	532	383	308	267	230	180	151	79.3	68.7
1.80V	1206	821	518	371	298	259	223	175	150	78.8	68.3

Constant Power Discharge Characteristics (Watt, 25°C)

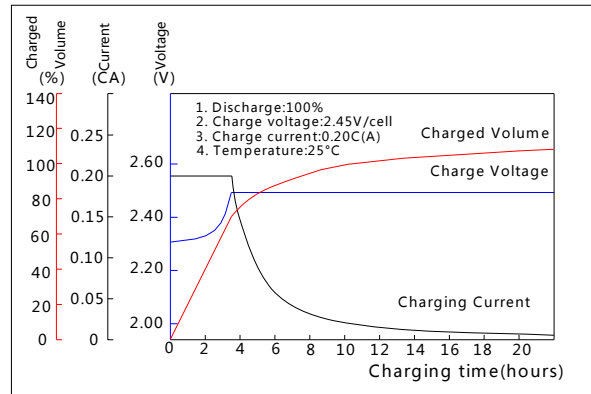
F.V/TIME	30min	60min	2h	3h	4h	5h	6h	8h	10h	20h	24h
1.60V	2525	1710	1058	765	615	537	461	365	304	160	140
1.65V	2474	1684	1052	760	611	533	458	363	303	160	139
1.70V	2398	1642	1042	755	607	530	455	361	302	160	139
1.75V	2340	1609	1027	750	603	526	452	358	301	159	138
1.80V	2254	1560	1001	727	585	510	439	347	299	158	137

Note: The above characteristics data can be obtained within three charge/discharge cycles.

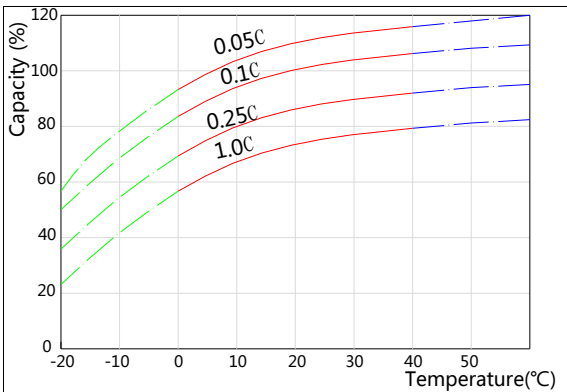
Discharge Characteristics(25°C)



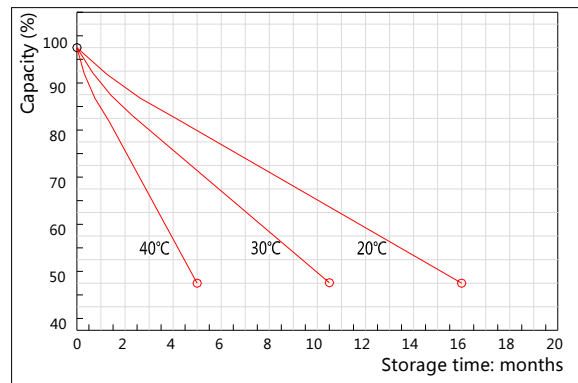
Charging Characteristics(25°C)



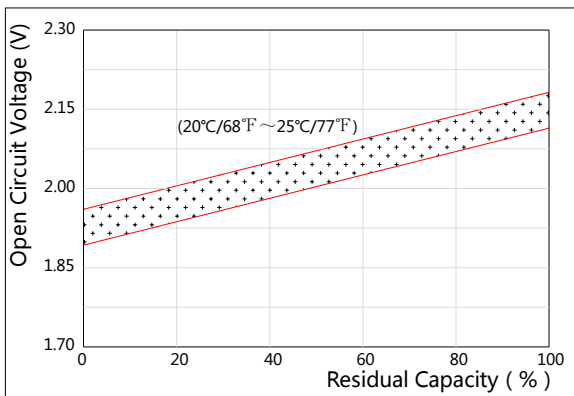
Effect of Temperature on Capacity



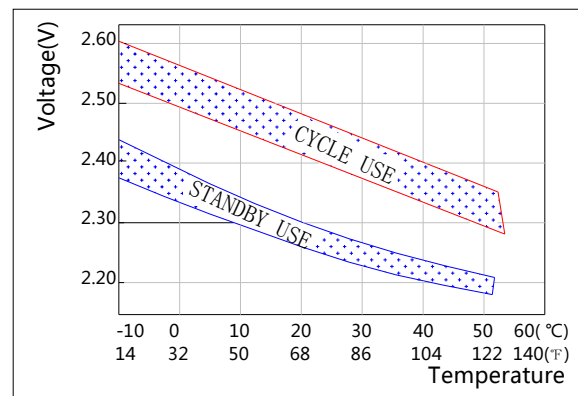
Self-discharge Characteristics



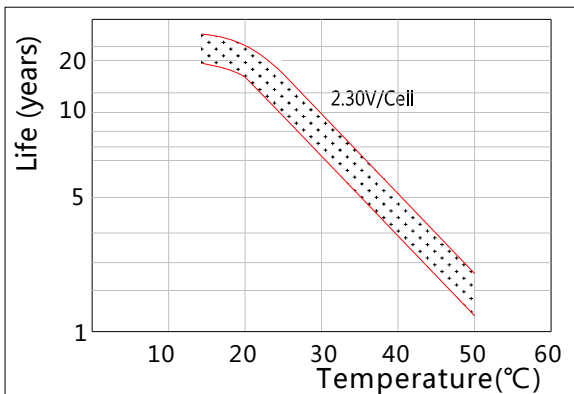
The Relationship for Open Circuit Voltage and Residual Capacity (25°C)



The Relationship for Charging Voltage and Temperature



Floating Life on Temperature



Cycle Life on D.O.D(25°C)

