

# iC3000

## The complete Development Tool Solution for NEC V850

iSYSTEM offers a complete tool solution for embedded systems design and test for NEC V850 family:

The V850 is a very powerful 32-bit core. The system is based on iSYSTEM's iC3000 ActiveEmulator and winIDEA, iSYSTEM's Integrated Development Environment and Debugger.

The In-Circuit Emulator is a full-blown high-performance development system. The iC3000 ActiveEmulator will be connected to the ActivePRO or ActiveGT POD for V850. The system supports stand-alone operation without the target and complete In-Circuit Emulation (ICE) at the target system, where the V850 micro controller is replaced by the ActivePRO/GT POD with a target solder adapter.

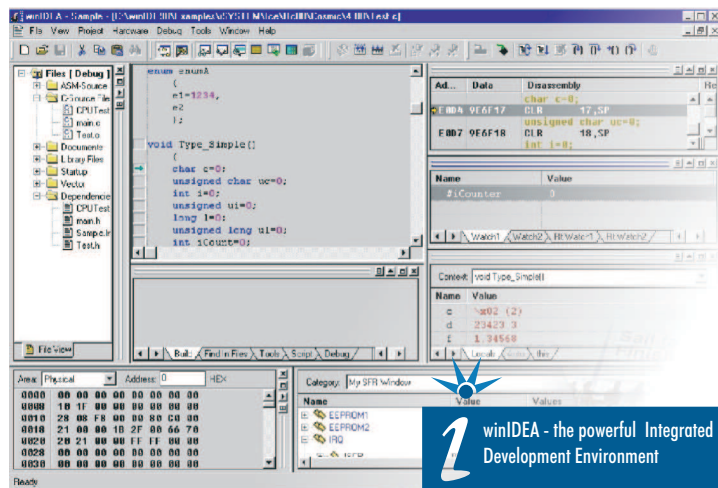
Full ICE-Debug functions are supported with complete bus trace and performance analysis.

The iC3000 ActiveEmulator connects to the host PC by USB or Ethernet interfaces for fast communication with the IDE, winIDEA. winIDEA runs on Windows NT, 2000, XP and Vista as host operating system platforms. All popular C/C++ compilers for V850 can be integrated into winIDEA.

### iC3000

#### In-Circuit-Emulation Features

- Based on V850 Bondout
- 1MByte Overlay Emulation Memory
- Access Breakpoints
- Unlimited Execution Breakpoints
- Real-Time Access
- HLL Debugging (ASM/C/C++)
- Call Stack, SFR Window, Memory Window
- ActivePRO: 16 MB Trace Buffer
- ActiveGT: 1 GB Trace Buffer
- Advanced Trace Trigger & Qualifier
- Long Lasting Profiling
- Endless Execution Coverage
- Statement and Decision Coverage
- Trigger Input/Output
- 16 AUX Trace Inputs



 winIDEA - the powerful Integrated Development Environment

 iC3000 ActiveEmulator with ActivePRO POD for V850



# iC3000

## The complete Development Tool Solution for NEC V850

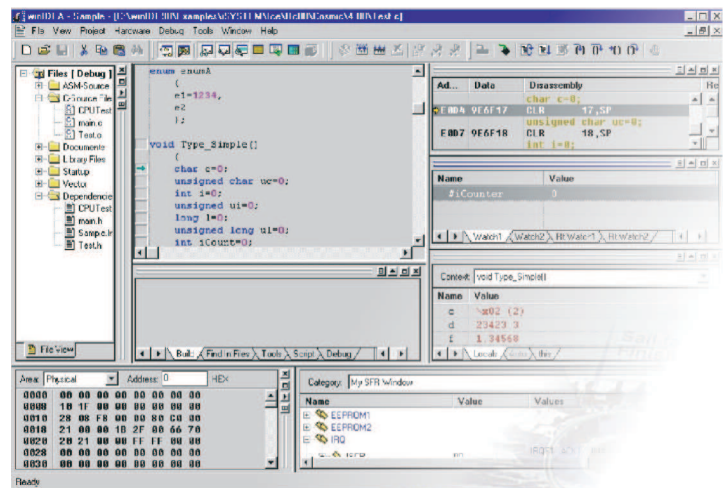


 iC3000 ActiveEmulator with iCARD N-WIRE interface and NEC V850 target system

### iC3000

#### On-Chip Debug Features

- N-Wire Debug Interface (Debug Levels 1.8 ...5V)
- Maximum CPU Frequency supported
- Non intrusive
- Fast Download
- Unlimited Software Breakpoints
- 6 Hardware Execution Breakpoints
- Access Breakpoints
- Real-time Access
- Call Stack
- High-Speed Program & Data Flash Programming
- Security Function
- Run Time Measurement



 winIDEA - the powerful Integrated Development Environment