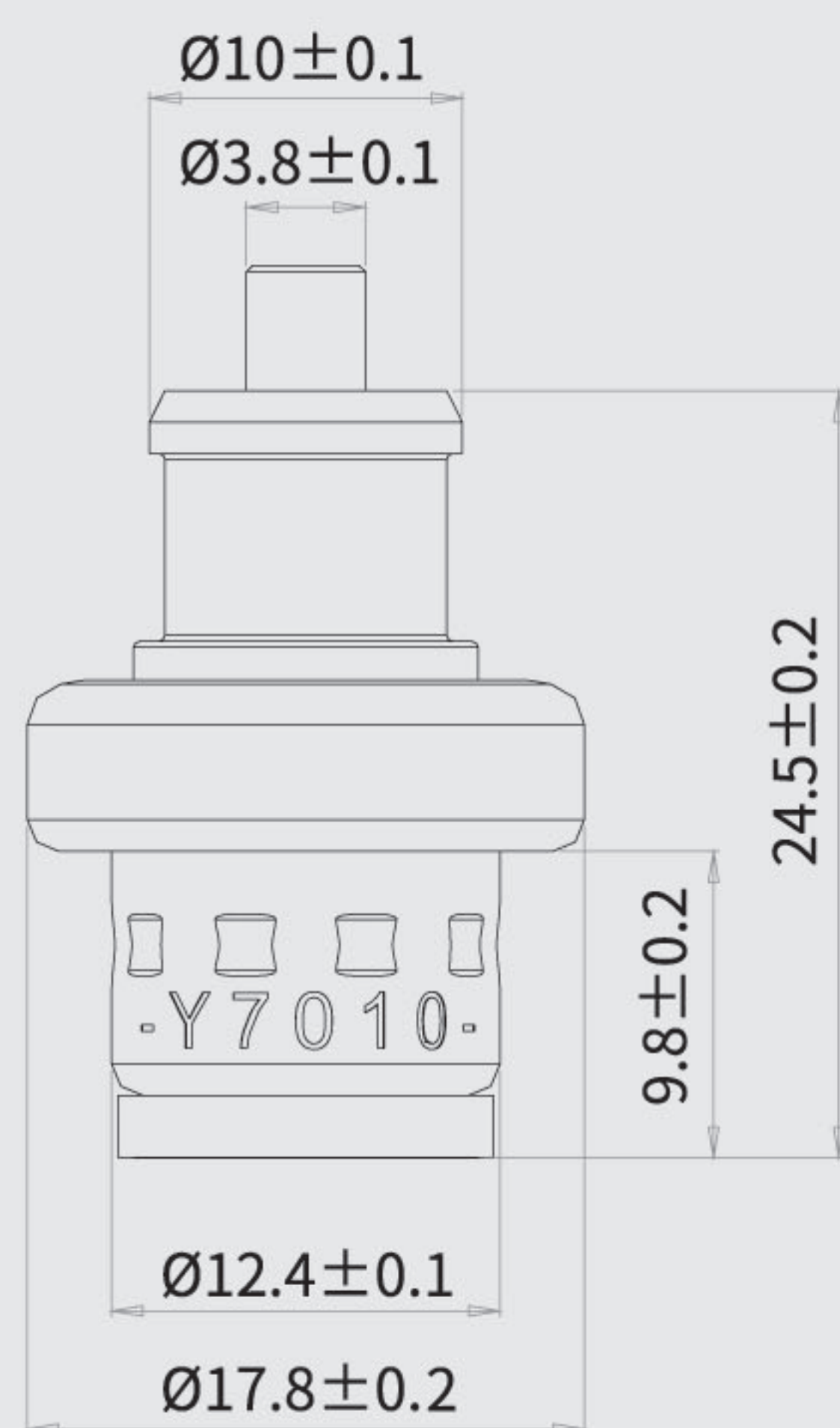
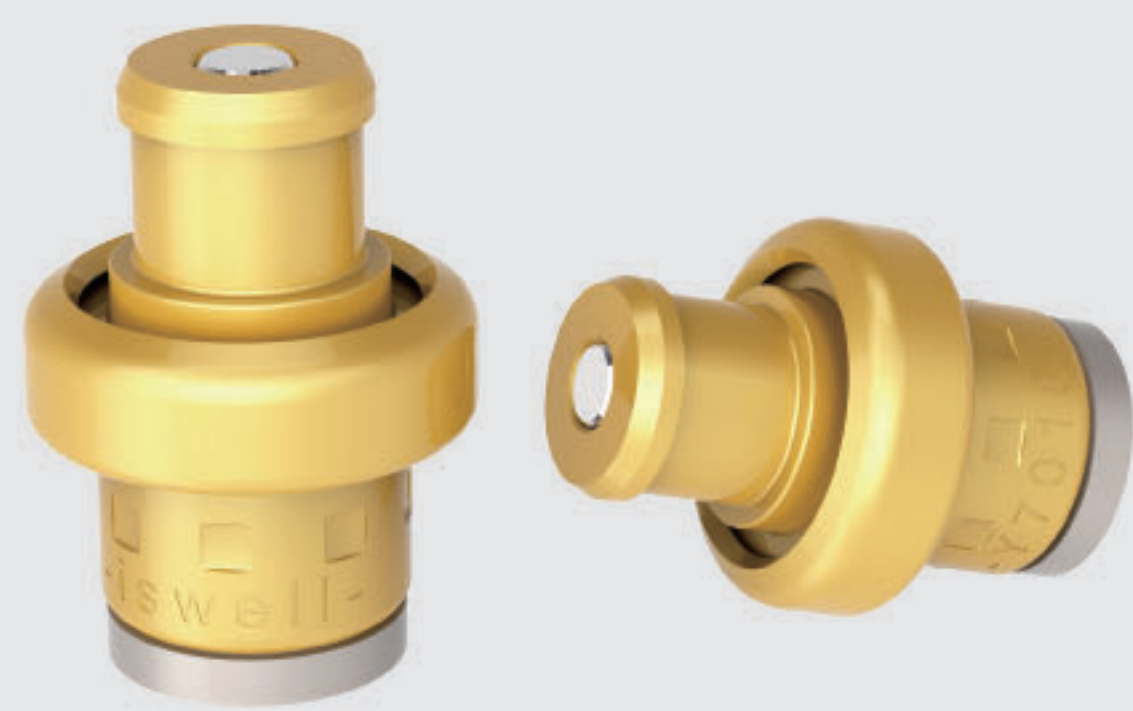


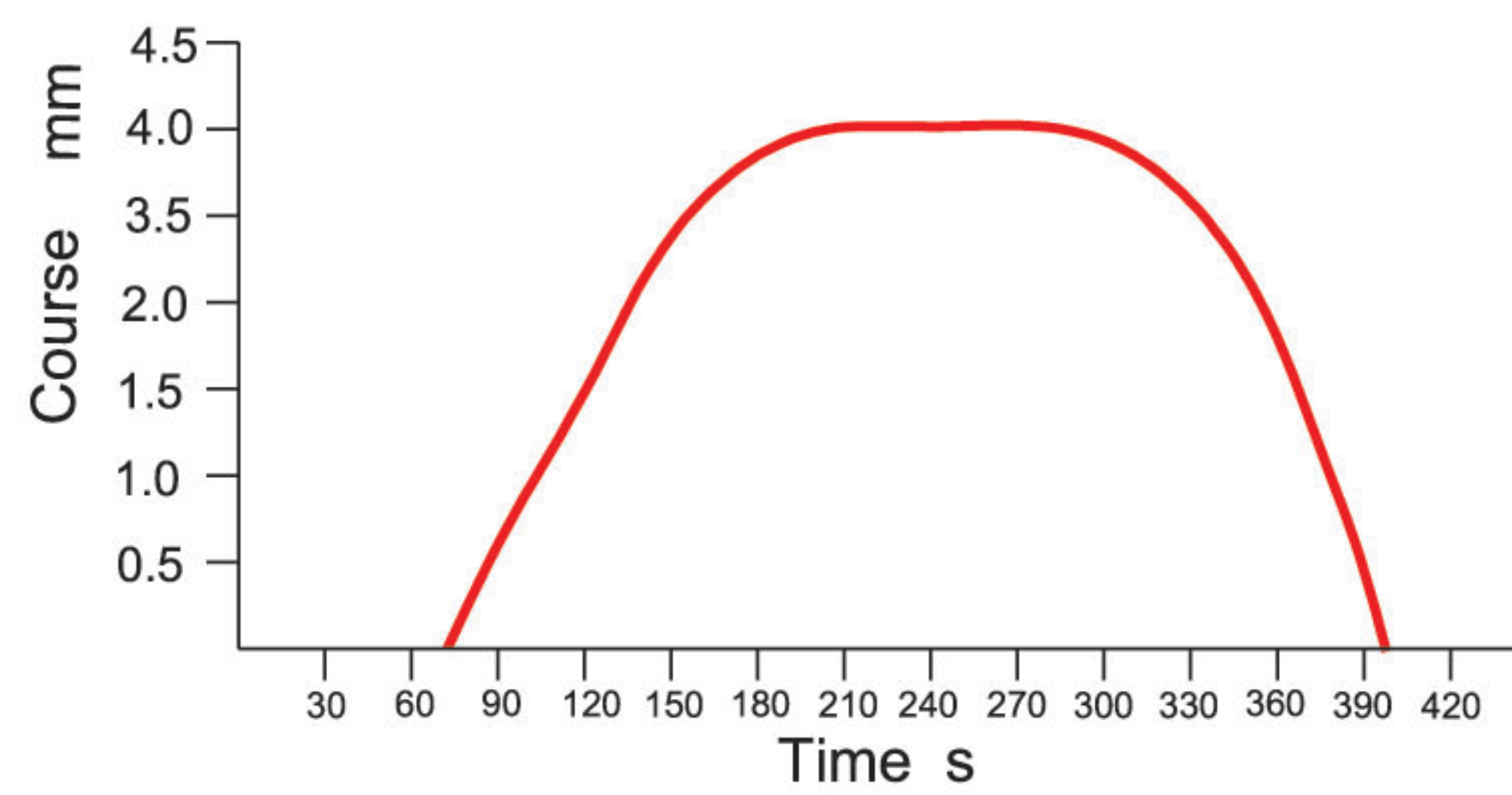
技术参数 Technical Specification

Y7010



Type : 型号:	Y7010
Voltage 电压	220V/110V/24V
Stabilized power 稳态功率	<2.5W
Rated course 额定行程	4.0±0.5mm
Response time to 3.0mm* 响应时间 -到达3.0mm	<180s
Min operating load 最小负载	30N
Max operating load 最大负载	200N
Function environment 工作环境	-10-55度

Time and course



Force and course

