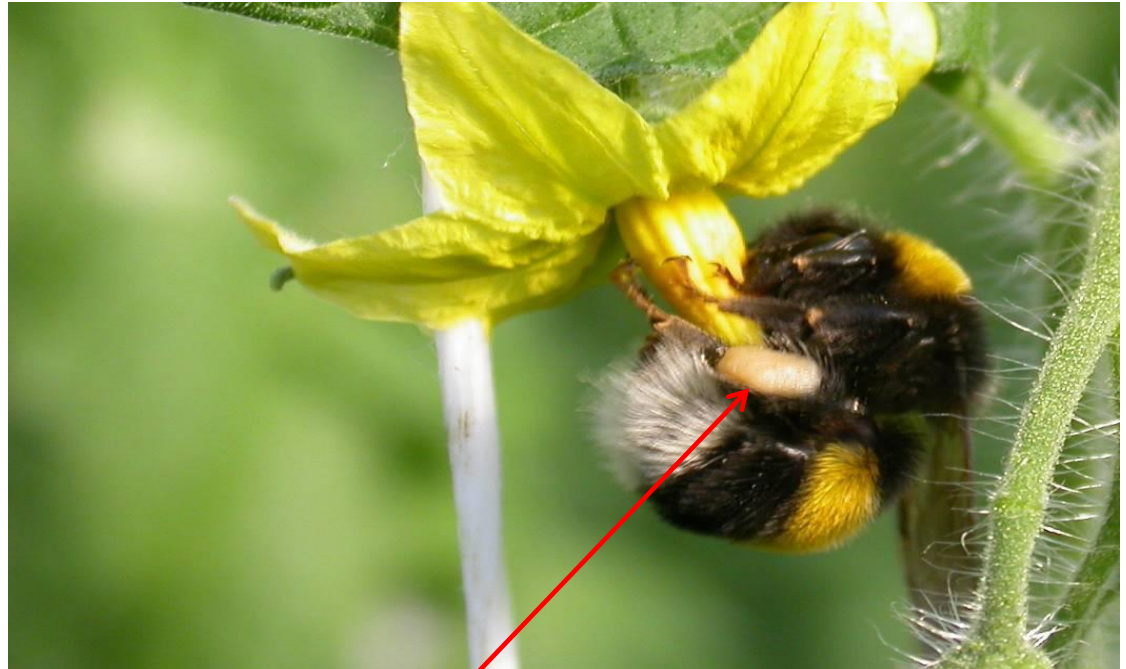




How do Bumblebees pollinate? 熊蜂如何授粉？



1. Grasp the flower with their legs and jaws 熊蜂的腿和颚抓住花朵
2. Vibrate the flowers 振动花朵
3. Collect the pollen from their chest 收集胸部附近的花粉
4. Store the pollen in the corbicula 将花粉储存在花粉篮中
5. Leave bite marks on flowers 在花朵上留下咬痕



How do bumblebees pollinate? 熊蜂如何授粉



CORBICULA花粉篮



How to check the pollination level 如何检查授粉效果







Control of pollination (1/5) 控制授粉率

- ✓ Check the level of bite marks on recently closed flowers, but also on flowers. 检查熊蜂在刚刚闭合花朵及放花花朵上留下的咬痕情况
- 1. Black marks; damage on the pistil possible 黑色咬痕：雌蕊可能受损
- 2. Brown marks; very well pollinated 棕色咬痕：授粉效果非常好
- 3. Flowers are slightly marked; well pollinated 咬痕颜色浅：授粉效果好
- 4. Not all flowers are marked; poorly pollinated 不是每个花朵上有咬痕：授粉效果差
- 5. No bite marks; no pollination 无咬痕：没有授粉

70% of the flowers should be bitten (level 2)

应该有70%的花朵上有咬痕（2级）

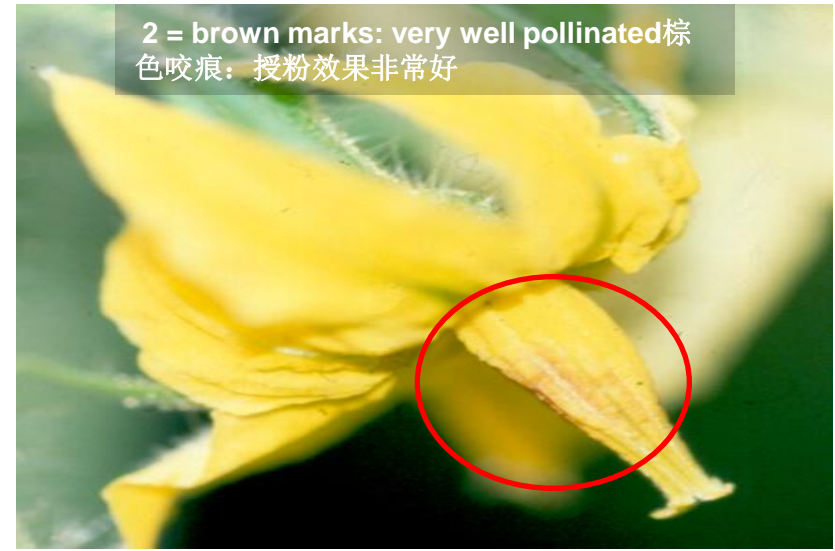
If not enough flowers are bitten, consult your Biobest advisor!

如有没有达到该授粉水平，请咨询您的技术顾问！



Control of pollination (2/5)

控制授粉率





Control of pollination (3/5) 控制授粉率

Keep in mind that请注意:

- Flowers just opened (pale yellow colour) are not attractive yet.
刚刚放花的花朵（淡黄色）对熊蜂没有吸引力
- In warm and dry conditions, the bite marks are less visible than in fresh conditions
在温暖和干燥条件下，咬痕会不如湿润条件下可见。
- In winter and early spring, the flowers stay opened longer (about 2/3 days) than in summer or warm period (few hours/1 day)
冬季及早春（约2/3天）比夏季或者天气温暖的时候放花时间长（几个小时/1天）。