



Hive introduction 投放蜂箱

First introduction 第一次投放蜂箱

As soon as sufficient flowers are open

当放花数量足够时尽快投放熊蜂

Where and how to place the hive

蜂箱的摆放位置和方法

Distribute hives evenly in the greenhouse:

将蜂箱均匀放置在温室内

- In glass,- and plastic greenhouses: use 1 introduction point per 1.000 m²;

玻璃温室或者日光大棚内，设置1个蜂箱放置点/1000 平米

- In tunnels: use 2 introduction points per 1.000 m².

拱棚内：设置2个蜂箱放置点/1000平米。





Position of the hive 蜂箱的摆放位置

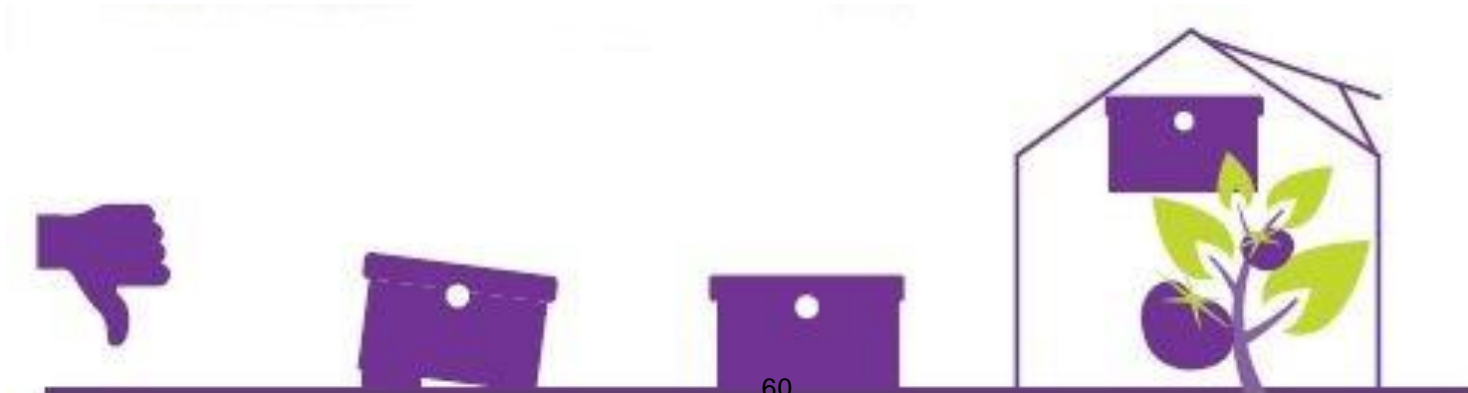
- Nearby the corridor, not further than 5 meters in the crop;
将蜂箱放置在距离走道最远不超过5米的作物中
- Not more than 6-8 hives together in 1 introduction point.
每个放置点最多摆放6-8箱熊蜂
- Alternate position, in opposite directions
交错、相反方向摆放蜂箱

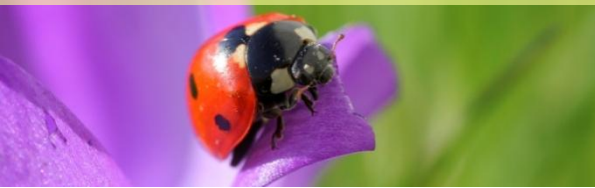




Placement the hive 投放蜂箱

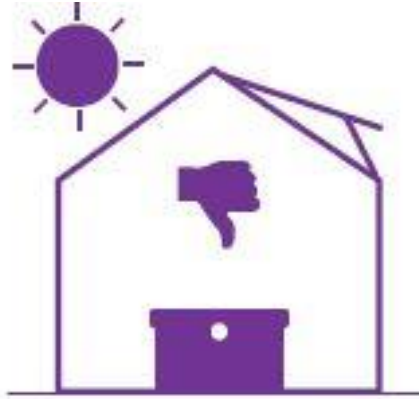
- Make sure that the hives are placed in a horizontal position with space in front of the flight opening;
飞行开口向前，水平放置蜂箱
- Do not place the hive on the ground or above the crop;
请勿将蜂箱放置在地面上或作物上方
- Do not place the hive near CO₂ tubes.
请勿将蜂箱放置在二氧化碳管道附近





Protection of the hive 保护蜂箱

- Protect the hive against direct sunlight
避免蜂箱阳光直射
- Protect the hive from ants, by creating a physical barrier
设置遮挡物，以避免蚂蚁侵入。





Particular conditions in plastic tunnels 塑料拱棚内的特殊情况

- High fluctuation of temperature (Day-night)
温度变化大（日温/夜温）
- High fluctuation of humidity (dry-wet)
湿度变化大（干/湿）
- Air ventilation is reduced
空气流通性差
- Condensation on greenhouse film →
protect hives from droplets falling down
onto the hive!
拱棚薄膜上水蒸汽凝结 → 保护蜂箱，以避免水珠坠落到蜂箱上

