



No to do!
请勿进行以下操作!

- ✓ **Do not leave the lid of the hive opened – It must remain closed!**
不要打开蜂箱顶盖-保持关闭状态!





No to do!
请勿进行以下操作!

- ✓ **Do not place hives in the walkway = better among vegetation!**
请勿将蜂箱放置在走道上=最好放置在作物中!

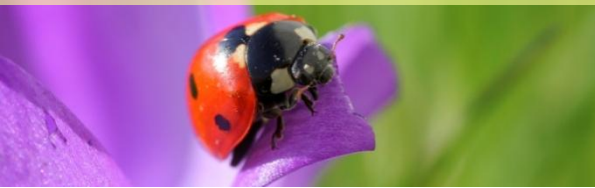




No to do!
请勿进行以下操作!

- ✓ **Do not position the hive in direct sunlight = protect it with, e.g. with a polystyrene plate** 请勿将蜂箱放置在阳光直射的地方=请设遮挡物，如聚乙烯板
- ✓ **Do not position the hive in the middle of the tunnel = lack of ventilation** 请勿将熊蜂放置在拱棚中间的位置=通风性差





No to do! 请勿进行以下操作!

- ✓ Do not introduce hives during the middle of the day (high temp.) → better to introduce **early the morning**;
不要在中午（气温高）时安置蜂箱，最好在清晨
- ✓ Do not open hives immediately after introduction
→ wait for **30-60 minutes**;
安置蜂箱后，不能立即打开蜂锁，要等待**30-60分钟**后再打开
- ✓ Do not forget to close (and remove) hives before harmful chemical application
→ use bee-lock 1-2 hours before application
→ consult side effect list **before!**
在使用有害的农药前**1-2**小时就应该从温室移走蜂箱，农药的危害程度，要参考农药使用表
- ✓ Do not store hives in hot places and sunny places → store hives in **dark and cool** storage room
存放蜂箱要放在凉爽和暗的房间里，不要放在有阳光和热的房间
- ✓ In case the hives are removed, do not forget to put same hive in same tunnel and same direction (e.g. by numbering the hives)
放回蜂箱时要放在原来的温室中原来的地方，原来的朝向。