



#### ■ Features :

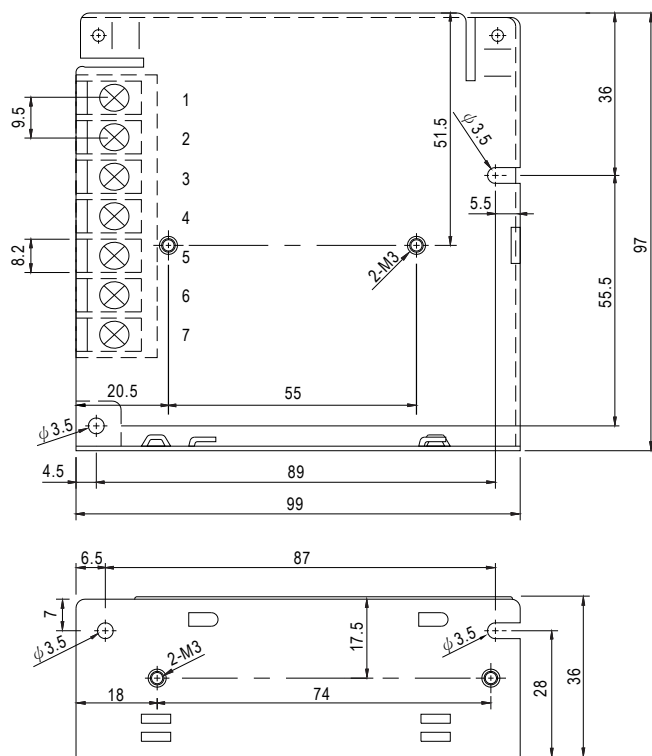
- Universal AC input / Full range
- Protections: Short circuit / Overload / Over voltage
- Cooling by free air convection
- LED indicator for power on
- 100% full load burn-in test
- All using 105°C long life electrolytic capacitors
- Withstand 300VAC surge input for 5 second
- High operating temperature up to 70°C
- Withstand 5G vibration test
- High efficiency, long life and high reliability
- 3 years warranty

#### SPECIFICATION

MODEL		RD-50A		RD-50B	
OUTPUT	OUTPUT NUMBER	CH1	CH2	CH1	CH2
	DC VOLTAGE	5V	12V	5V	24V
	RATED CURRENT	6A	2A	4A	1.4A
	CURRENT RANGE     Note.3	0 ~ 6A	0 ~ 3A	0 ~ 6A	0 ~ 2A
	RATED POWER	54W		53.6W	
	RIPPLE & NOISE (max.)   Note.2	80mVp-p	120mVp-p	80mVp-p	150mVp-p
	VOLTAGE ADJ. RANGE	CH1: 4.75 ~ 5.5V		CH1: 4.75 ~ 5.5V	
	VOLTAGE TOLERANCE   Note.3	±2.0%	±7.0%	±2.0%	±8%
	LINE REGULATION     Note.4	±0.5%	±1.5%	±0.5%	±1.5%
	LOAD REGULATION     Note.5	±0.5%	±3.0%	±0.5%	±3.0%
SETUP, RISE TIME		500ms, 20ms/230VAC     1200ms, 30ms/115VAC at full load			
HOLD UP TIME (Typ.)		60ms/230VAC     10ms/115VAC at full load			
INPUT	VOLTAGE RANGE	88 ~ 264VAC     125 ~ 373VDC (Withstand 300VAC surge for 5sec. Without damage)			
	FREQUENCY RANGE	47 ~ 63Hz			
	EFFICIENCY(Typ.)	83%		84%	
	AC CURRENT (Typ.)	1.3A/115VAC     0.8A/230VAC			
	INRUSH CURRENT (Typ.)	COLD START 50A/230VAC			
LEAKAGE CURRENT		<2mA / 240VAC			
PROTECTION	OVERLOAD	110 ~ 150% rated output power			
		Protection type : Hiccup mode, recovers automatically after fault condition is removed			
	OVER VOLTAGE	CH1: 5.75 ~ 6.75V Protection type : Hiccup mode, recovers automatically after fault condition is removed			
ENVIRONMENT	WORKING TEMP.	-25 ~ +70℃ (Refer to "Derating Curve")			
	WORKING HUMIDITY	20 ~ 90% RH non-condensing			
	STORAGE TEMP., HUMIDITY	-40 ~ +85℃, 10 ~ 95% RH			
	TEMP. COEFFICIENT	±0.03%/℃ (0 ~ 50℃)on +5V output			
	VIBRATION	10 ~ 500Hz, 5G 10min./1cycle, period for 60min. each along X, Y, Z axes			
SAFETY & EMC (Note 6)	SAFETY STANDARDS	UL62368-1, TUV BS EN/EN62368-1, EAC TP TC 004 approved			
	WITHSTAND VOLTAGE	I/P-O/P:3KVAC    I/P-FG:2KVAC    O/P-FG:0.5KVAC			
	ISOLATION RESISTANCE	I/P-O/P, I/P-FG, O/P-FG:100M Ohms / 500VDC / 25℃/ 70% RH			
	EMC EMISSION	Refer to BS EN/EN55032 (CISPR32) Class B, BS EN/EN61000-3-2,-3, EAC TP TC 020			
OTHERS	EMC IMMUNITY	Refer to BS EN/EN61000-4-2,3,4,5,6,8,11, BS EN/EN61000-6-2 (BS EN/EN50082-2), heavy industry level, criteria A, EAC TP TC 020			
	MTBF	265.9Khrs min.    MIL-HDBK-217F (25℃)			
	DIMENSION	129*98*38mm (L*W*H)			
	PACKING	0.35Kg; 30pcs/11.5Kg/0.72CUFT			
NOTE	1.All parameters NOT specially mentioned are measured at 230 VAC input,rated load 25 ℃ of ambient temperature. 2.Ripple&noise are measured at 20MHz of bandwidth by using a 12# twisted pair-wire terminated with a 0.1uf& 47uf parallel capacitor. 3.Tolerance:includes set up tolerance,line regulation and load regulation,when multi-channel output,it is recommended that CH1 load>10% 4.line regulation is measured form low line to high line at rated load. 5.Load regulation is measured from 20% to 100% rated load,and other output at 60% rated load. 6.Each output is able to work within current range,but total output power should not exceed rated output power. 7.The ambient temperature de-rating of 3.5 ℃/1000m with fan-less models and of 5 ℃/1000m with fan models for poerating altitude higher than 2000m.				

## Mechanical Specification

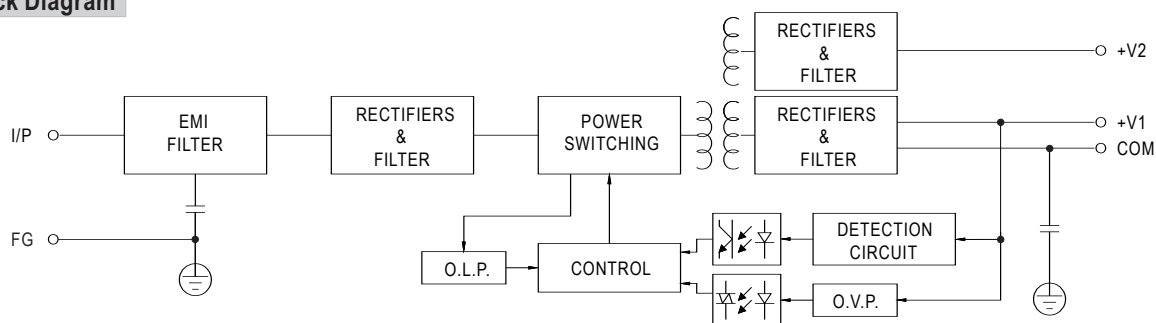
Unit:mm



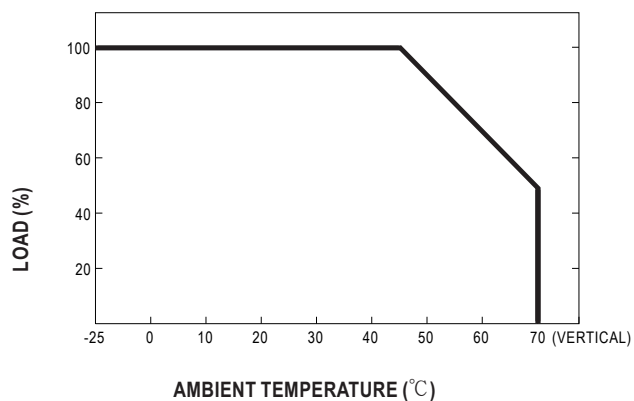
Terminal Pin No. Assignment

Pin No.	Assignment	Pin No.	Assignment
1	AC/L	4,6	DC OUTPUT COM
2	AC/N	5	DC OUTPUT +V2
3	FG $\perp$	7	DC OUTPUT +V1

## Block Diagram



## Derating Curve



## Output Derating VS Input Voltage

