

On-wall-humidity- and temperature sensors ($\pm 2.0\%$), compact form, for mixture ratio, relative/absolute humidity, dew point, enthalpy and temperature, calibratable, with Modbus connection

Calibratable outdoor humidity- and temperature sensor **HYGRASGARD® AFTF-SD-Modbus** with Modbus connection, enclosure made from impact-resistant plastic with quick-locking screws, **with/without optional display**.

The universal on-wall sensor is used to determine various characteristic variables in humidity measurement. It is used to measure the relative humidity and the temperature of the surrounding air. These measurands are used to calculate various parameters internally. The Modbus can be used to retrieve the following parameters: relative humidity [% r.H.], absolute humidity [g/m³], mixture ratio [g/kg], dew point temperature [°C], enthalpy [kJ/kg] (ignoring atmospheric air pressure) and ambient temperature [°C].

It is used in non-aggressive dust-free environments in refrigeration, air conditioning, ventilation and clean room technology, hotels, technical rooms, meeting rooms and convention centres. The measuring transducers are designed for exact detection of temperature and humidity. A digital long-term stable sensor is used as measuring element for humidity and temperature measurement. Fine adjustment by the user is possible.

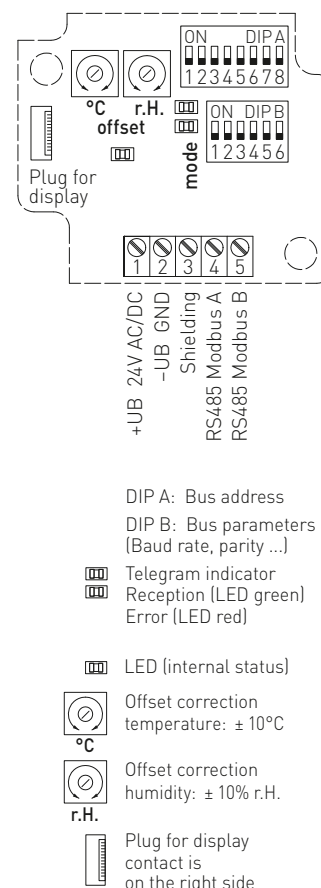
TECHNICAL DATA

| | |
|---------------------------|--|
| Voltage supply: | 24 V AC ($\pm 20\%$) and 15...36 V DC |
| Power consumption: | < 1 VA / 24 V DC, < 2.2 VA / 24 V AC |
| Sensors: | digital humidity sensor with integrated temperature sensor , low hysteresis, high long-term stability |
| Sensor protection: | plastic sinter filter, \varnothing 16 mm, L = 35 mm, exchangeable (optional metal sinter filter, \varnothing 16 mm, L = 32 mm) |
| Measuring range: | 0...100 % r.H. (humidity) -35...+80 °C (temperature) |
| Deviation, humidity: | typically $\pm 2.0\%$ (20...80 % r.H.) at +25 °C, otherwise $\pm 3.0\%$ |
| Temperature deviation: | ± 0.2 K at +25 °C |
| Zero point offset: | $\pm 10\%$ r.H. (humidity) ± 10 °C (temperature) |
| Ambient temperature: | -30...+70 °C |
| Medium: | clean air and non-aggressive, non-combustible gases |
| Bus protocol: | Modbus (RTU mode), address range 0...247 selectable |
| Enclosure: | plastic, UV-stabilised, material polyamide, 30 % glass-globe reinforced, with quick-locking screws (slotted / Phillips head combination), colour traffic white (similar to RAL 9016), enclosure cover for display is transparent! |
| Enclosure dimensions: | 72 x 64 x 37.8 mm (Tyr 1 without display) 72 x 64 x 43.3 mm (Tyr 1 with display) |
| Cable gland: | 2x M12 x 1.5 (Y-adapter); with strain relief, exchangeable, max. inner diameter 6 mm |
| Protective tube: | stainless steel, \varnothing 16 mm, NL = 55 mm |
| Process connection: | by screws |
| Long-term stability: | $\pm 1\%$ / year |
| Permissible air humidity: | < 95 % r.H., non-precipitating air |
| Protection class: | III (according to EN 60 730) |
| Protection type: | IP 65 (according to EN 60 529) |
| Standards: | CE conformity according to EMC Directive 2014 / 30 / EU, according to EN 61326 |
| Optional: | two-line display with illumination , programmable, cutout approx. 36 x 15 mm (W x H), for displaying the actual humidity and actual temperature or a selectable parameter or an individually programmable display value (The Modbus interface allows the display to be individually configured in the 7-segment area and in the dot-matrix area.) |
| ACCESSORIES | see table |
| MODBUS-Y | Y-adapter for cable gland M16x1.5 (on 2x M12x1.5), plastic (included in the scope of delivery) |

AFTF-SD-Modbus
compact form



Schematic diagram **HYGRASGARD® MODBUS**



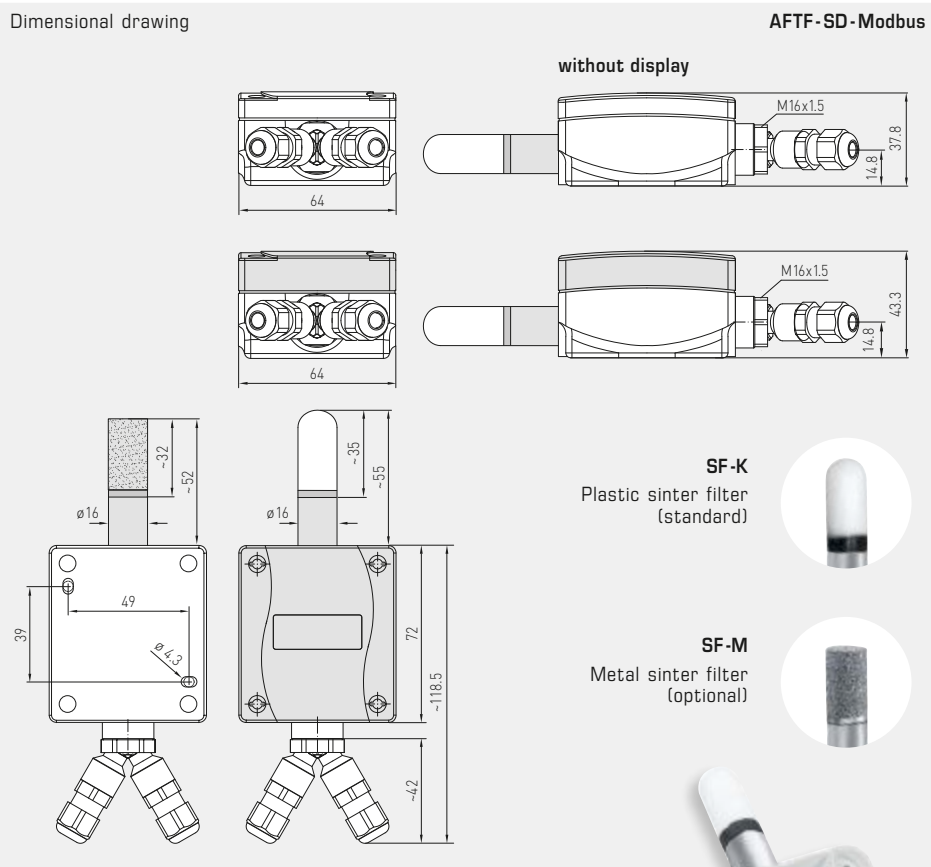


S+S REGELTECHNIK

HYGRASGARD® AFTF-SD-Modbus

On-wall-humidity- and temperature sensors ($\pm 2.0\%$), compact form, for mixture ratio, relative/absolute humidity, dew point, enthalpy and temperature, calibratable, with Modbus connection

Dimensional drawing



AFTF-SD-Modbus
compact form
with display



WS-04

Weather and sun
protection hood
(optional)



HYGRASGARD® AFTF-SD-Modbus – On-wall-humidity- and temperature sensor/s ($\pm 2.0\%$), compact form

| Type / WG01 | Measuring Range / Readout Humidity (switchable) | Temperature | Output | Display | Item No. | Price |
|------------------------|---|----------------|--------|---------|--------------------|------------|
| AFTF-SD-Modbus | | | | | | |
| AFTF-SD-MODBUS | 0...100% r. H. (standard) 0...80 g/kg (MR) 0...80 g/m ³ (A.H.) 0...85 kJ/kg (ENT.) -20...+80 °C (DP) | -35...+80 °C | Modbus | | 1201-1226-1000-100 | |
| AFTF-SD-MODBUS DISPLAY | (5 x as above) | (1 x as above) | Modbus | ■ | 1201-1226-1200-100 | |
| Accessories | | | | | | |
| KA-2 | Modbus communication adapter with USB/RS485 interface for system connection or/and as an active bus termination resistance | | | | | on request |
| SF-M | Metal sinter filter, Ø 16 mm, L = 32 mm, exchangeable stainless steel V4A (1.4404) | | | | 7000-0050-2200-100 | |
| WS-01 | Sun and ball-impact protection hood, 184 x 180 x 80 mm, stainless steel | | | | 7100-0040-2000-000 | |
| WS-04 | Weather and sun protection hood, 130 x 180 x 135 mm, stainless steel | | | | 7100-0040-7000-000 | |

For further information, see last chapter Accessories!