

## LC2-1500C (2V1500Ah)

LC-C series lead-carbon batteries use functional activated carbon and graphene as carbon materials, which are added to the negative plate of the battery to make lead carbon batteries have the advantages of both lead-acid batteries and super capacitors. It not only improves the ability of rapid charge and discharge, but also greatly prolongs the battery life, more than 2200 cycles at 80%DOD. It is more suitable for the application of PSOC.

<b>Cells Per Unit</b>	1
<b>Voltage Per Unit</b>	2
<b>Capacity</b>	1500Ah@10hr-rate to 1.80V per cell @25°C
<b>Weight</b>	Approx. 91 Kg (Tolerance±3%)
<b>Internal Resistance</b>	Approx. 0.52 mΩ
<b>Terminal</b>	F10(M8)
<b>Max. Discharge Current</b>	6000A (5 sec)
<b>Design Life</b>	20 years
<b>Max. Charging Current</b>	300.0 A
<b>Cycle Use Voltage</b>	2.37 V~2.40 V @ 25°C Temperature Compensation: -4mV/°C/Cell
<b>Operating Temperature Range</b>	Discharge: -20°C~60°C Charge: 0°C~50°C Storage: -20°C~60°C
<b>Normal Operating Temperature Range</b>	25°C±5°C
<b>Self Discharge</b>	The batteries can be stored for up to 6 months at 25°C and then recharging is recommended. Monthly Self-discharge ratio is less than 3% at 25°C. Please charge batteries before using.
<b>Container Material</b>	A.B.S. White/Black. UL94-HB/UL94-V0



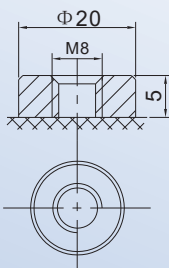
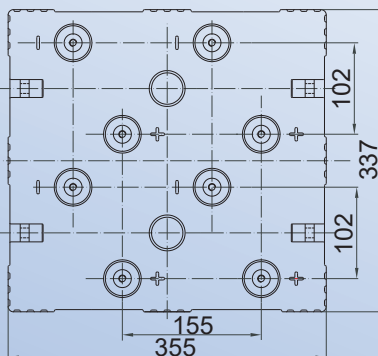
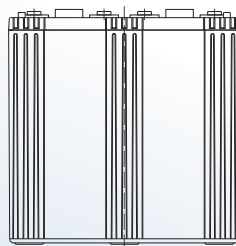
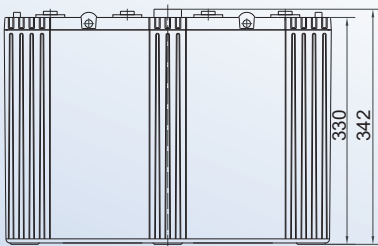
### COMPLIED STANDARDS:

- ISO 9001
- UL1642
- ISO 14001
- OHSAS 18001

# LC2-1500C (2V1500Ah)

Constant Current Discharge Characteristics :A(25°C)										
F.V/Time	30MIN	1HR	2HR	3HR	4HR	5HR	6HR	8HR	10HR	20HR
1.60V	1467	981.0	601.5	439.5	337.5	270.0	244.5	199.5	156.0	84.0
1.65V	1409	969.0	580.5	421.5	330.0	267.0	238.5	190.5	154.5	82.5
1.70V	1328	951.0	571.5	411.0	322.5	262.5	232.5	187.5	153.0	81.0
1.75V	1194	874.5	540.0	390.0	312.0	259.5	220.5	181.5	151.5	79.5
1.80V	1088	825.0	514.5	375.0	300.0	255.0	217.5	178.5	150.0	78.0
1.85V	979.5	762.0	486.0	357.0	292.5	240.0	205.5	169.5	145.5	73.5

Constant Power Discharge Characteristics : WPC(25°C)										
F.V/Time	30MIN	1HR	2HR	3HR	4HR	5HR	6HR	8HR	10HR	20HR
1.60V	2673	1827	1127	819.0	594.0	535.5	471.0	379.5	310.5	168.0
1.65V	2658	1817	1110	802.5	585.0	531.0	465.0	376.5	307.5	165.0
1.70V	2516	1799	1094	790.5	583.5	525.0	454.5	370.5	306.0	162.0
1.75V	2268	1688	1037	762.0	553.5	517.5	432.0	358.5	303.0	159.0
1.80V	2069	1605	988.5	730.5	552.0	508.5	426.0	352.5	300.0	156.0
1.85V	1865	1488	936.0	696.0	511.5	480.0	403.5	334.5	291.0	147.0



F10 TERMINAL

Unit: mm

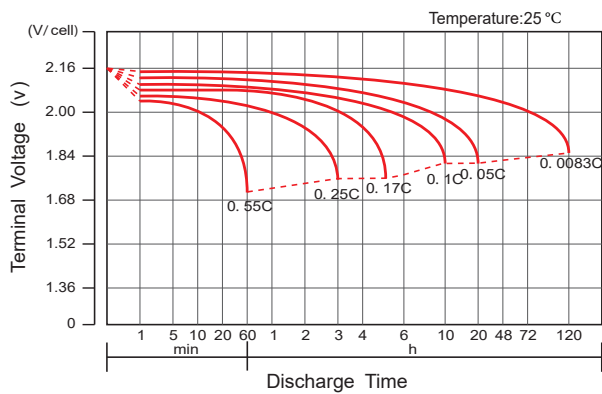
Length	355±2mm (14.0 inches)
Width	337±2mm (13.3 inches)
Height	330±2mm (13.0 inches)
Total Height	342±2mm (13.5 inches)
<b>Terminal</b>	<b>Value</b>
M5	6~7 N*m
M6	8~10 N*m
M8	10~12 N*m

# LC2-1500C (2V1500Ah)

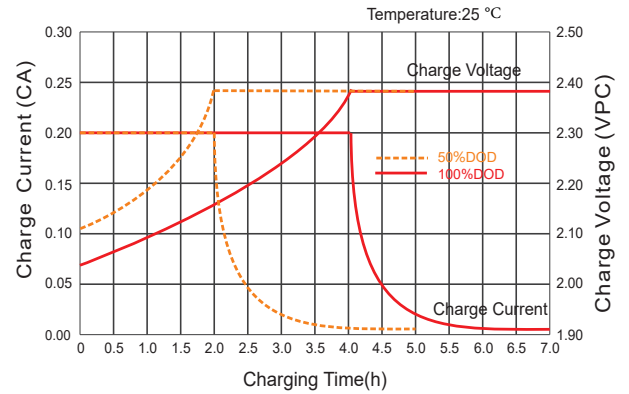
### Reference Capacity

Hour Rate	C10 (Ah)	C72 (Ah)	C100 (Ah)	C120 (Ah)
F.V (V/Cell)	1.80	1.85	1.85	1.85
Capacity (Ah)	1500.0	1647.0	1677.0	1717.0

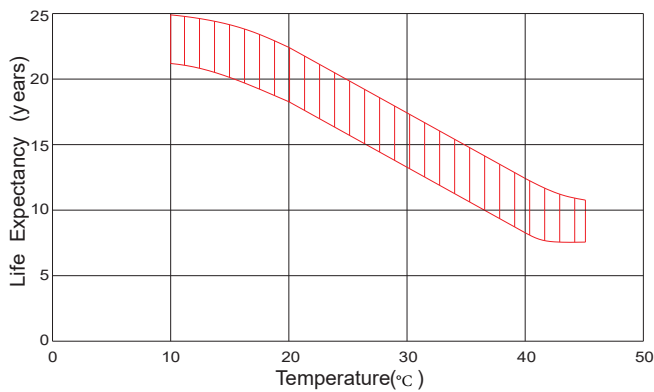
Discharge Characteristics Curve



Charge Characteristic Curve for Cycle Use(IU)



Effect of Temperature on Long Term Life



Cycle Life in Relation to Depth of Discharge

