

General Specifications

Impeller: Plastic(Black)94V-0

Frame : Plastic(Black)94V-0

Bearing : Sleeve

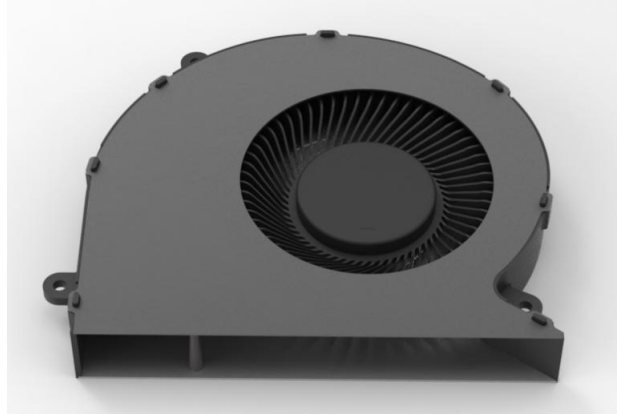
Life Expectancy : 30000hrs at 40°C

Operating Temp : -10°C~70°C

Wire/Terminal type : According to the customer's requests

Mass Weight : 75g(Ref)

IP Protection Level : IP50



Size (mm)	Model	Voltage (VDC)	Bearing	Speed (RPM)	Air Flow (CFM)	Static Pressure (mm Aq (in free air))	Noise (db(A))
95*84.8*14.4	B9514ASHNF2300TR	5	Sleeve	3350	16.8	17.8	44.6

