

General Specifications

Impeller: Plastic(Black)94V-0

Frame : Plastic(Black)94V-0

Bearing : Ball

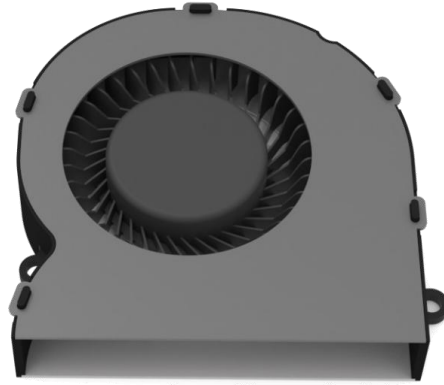
Life Expectancy : 70000hrs at 40°C

Operating Temp : -10°C~70°C

Wire/Terminal type : According to the customer's requests

Mass Weight : 28g(Ref)

IP Protection Level : IP50



Size (mm)	Model	Voltage (VDC)	Bearing	Speed (RPM)	Air Flow (CFM)	Static Pressure (mm Aq (in free air))	Noise (db(A))
52*52*10.4	B5410ABHSF2300SD	5	Double	5400	6.0	16.2	41.4

