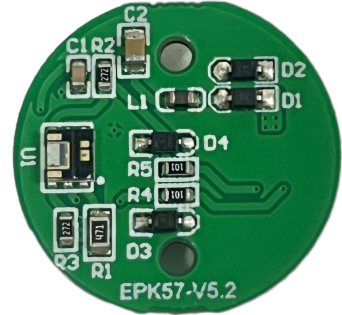


RS7257 Series 2-Channel Reflective PCBA

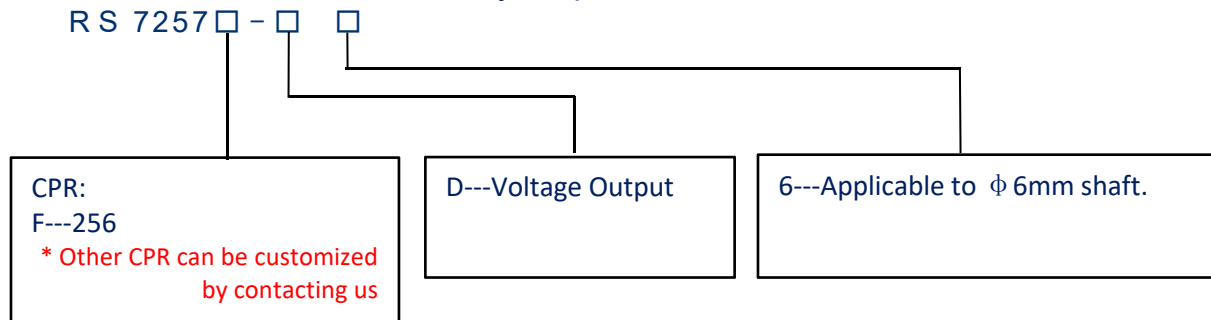
Description

RS7257 series is a 2-channel reflective encoder PCBA solution designed for stepper motors, DC motors and so on. The outer diameter is suitable for small size motors, with our glass, film and metal pallets, the typical model RS7257F can output 256 pulses A and B signals, which can be used in automation equipment and so on.

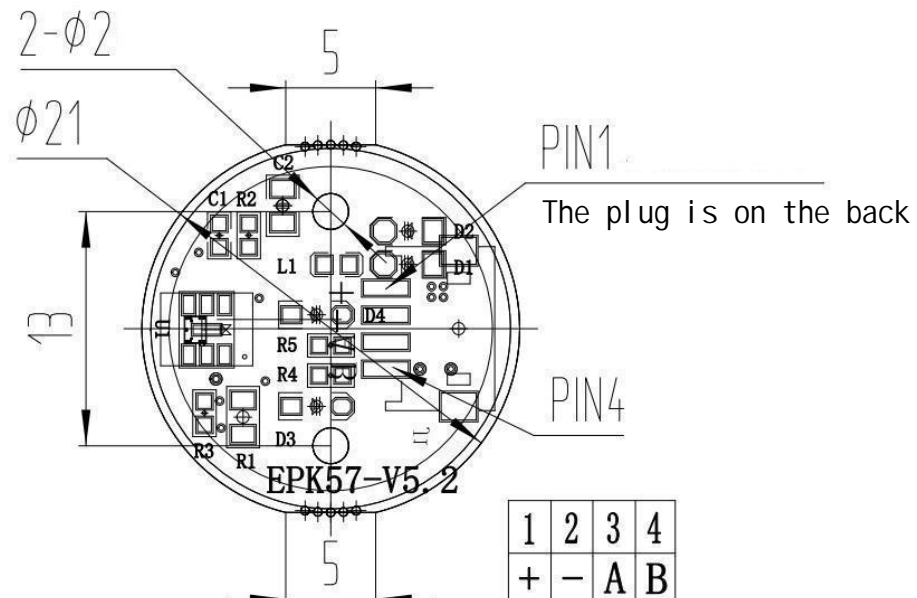


Ordering Information

RS7257 series is available in a variety of options as follows:



External Dimension



Note: Plug type spacing 1.5mm 4P



Installation Diagram

