



DATAMYTE™

DATAMETRICS

DataMetrics software gives you the edge in SPC data collection and puts you on the leading edge of quality technology. It's a real-time SPC program with a full suite of supporting applications that provide state-of-the-art setup, data analysis, reporting, and database configuration tools.

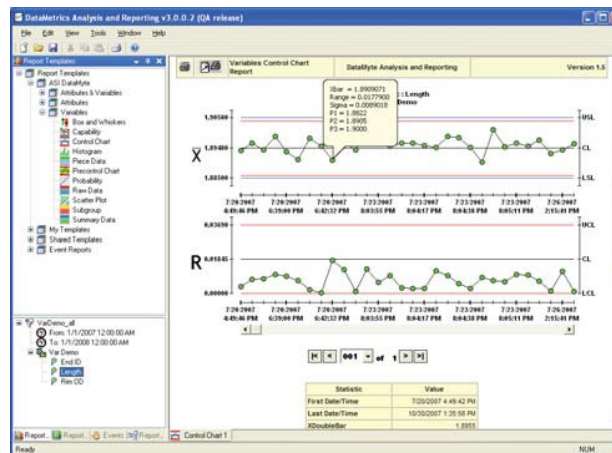
No doubt your numbers are getting noticed. Let's make sure they look good.

With more standard features than any other SPC software on the market, DataMetrics is the most advanced quality solution available today.

Accelerate Performance and Productivity

And, save time and money in the process. Use DataMetrics' intuitive configuration tool, Setup Editor, to define and edit processes, parts, labels, assignable causes and corrective actions. This software uses a MDI visual interface featuring multiple editors and standard Windows "drag and drop" techniques to make configuration easy.

Creating new setups couldn't be easier. With the automated setup wizard, you can quickly create products, setups, characteristic labels, data collection options and security for your applications.



A manual mode also lets you create setups with standard user-defined label names. Existing setups can be "cloned" or copied for reuse on other standalone stations and be password protected to ensure data security.

Now you have a choice: parts or processes. Setup Editor lets you configure your application by part, process, setup group or collector device. In addition to part setups, you can also assign a process name (e.g., a machine name) to characteristic data in order to track process performance using DataMetrics DC Advanced or DC Pro data collection modules.

Integrate and Interoperate

Keep Your Options Open. DataMetrics' database is fully interoperable with Microsoft SQL, SQL, and Server Express. This allows you to build upon the strengths of your existing platform and applications with minimal effort. The platform supports both part-based and process-based data collection. A scalable, flexible and powerful architecture integrates the best features of DATAMYTE's proven Applied Stats and Quantum SPC software products to provide common client applications, including:

- A single setup or configuration module
- A single reporting module
- A single set of administrative tools
- Open architecture that supports integration with other software products

Control Costs through Broad Connectivity

Get the most return out of your current investments. DataMetrics connects to more devices and systems than any other SPC program. These devices include checkweighers, Solartron orbital gages, and GageWay wireless systems. A standard feature of DataMetrics is the DATAMYTE data collection library that supports interfacing to more than 75 device drivers. This means you can use your existing gaging and related software programs and minimize your investment in new equipment, software and training.

Why pay for add-ons? DataMetrics is designed around a robust architecture that incorporates database tools, a setup editor, enhanced data collection, reporting and analysis, event monitoring, and administrative utilities. Standard features include Unicode and WAN support, ODBC compatibility, OPC connectivity, a file parser and a serial parser – items you might expect to pay for as add-ons with other SPC software

Data collector compatibility means instant usability. DataMetrics integrates your hardware solutions, working with all current DATAMYTE portable data collectors to provide multiple options for your data collection needs. A full suite of utility applications is included to support database management, connectivity to portable data collectors and other accessory functions.

Get the word out

Send and share reports on time, every time. A new report scheduling feature ensures that reports are delivered to your customers on time, every time. Robust scheduling options, designed around the Windows Scheduler, support daily, monthly, quarterly, year-to-date, shift-based and other required timeframes.



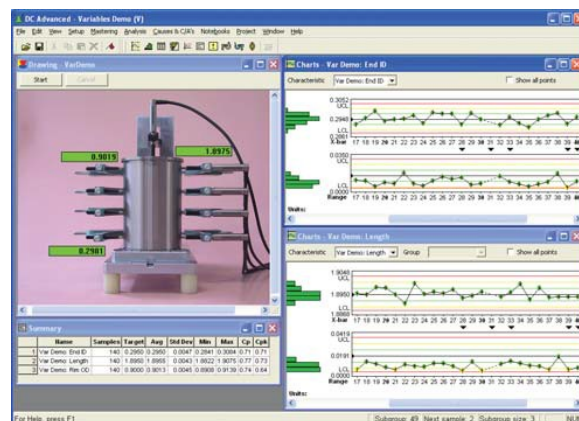
Reduce scrap and rework with real-time notification. DataMetrics real-time event monitoring and notification ensures that everyone who needs to know about production issues is made aware of problems as they occur. This instantaneous communication puts the brakes on product problems and reduces scrap and rework.

Flexibility and Customization

Tailor DataMetrics to fit your vision of quality improvement. From metal stamping to food processing, DataMetrics has the scalability, flexibility and power to cover a wide range of applications. Whether you're measuring casting wall thickness or beverage net weights, DataMetrics adapts to your current infrastructure and environment.

User-friendly report wizards. The built-in report wizards in the DataMetrics Analysis and Reporting module let you create reports with minimal training. DataMetrics supports a wealth of standard reports and templates and also lets you create your own custom, user-defined summary reports and report templates – features unmatched by any competitive SPC program.

Monitor the details with ease. The Event Viewer shows data collection along with events such as trends, assignable causes and limit violations, as well as many other filtering options. This viewer is a separate application that operates seamlessly within Analysis and Reporting. It lets you acknowledge events and determine details associated with a particular event.



Multiple data collection modules for multiple users. DataMetrics is available with two data collection modules: DC Advanced and DC Pro, letting you choose the feature set that best fits your application. Existing ASI Applied Stats users can move to DataMetrics with DC Advanced, while existing Quantum users can transition to DataMetrics with DC Pro. The Setup Editor, and Analysis and Reporting tools are common to both data collection applications.

Compliance and Traceability

Succeed with Confidence. DataMetrics' Audit Log keeps you on top of compliance issues. The system automatically generates a complete historical record of characteristic, setup and product history and allows you to track edits to data. The Audit Log is compatible with the requirements of 21 CFR Part 11, and is fully compliant with pharmaceutical and medical device applications.

Keep Up and Running

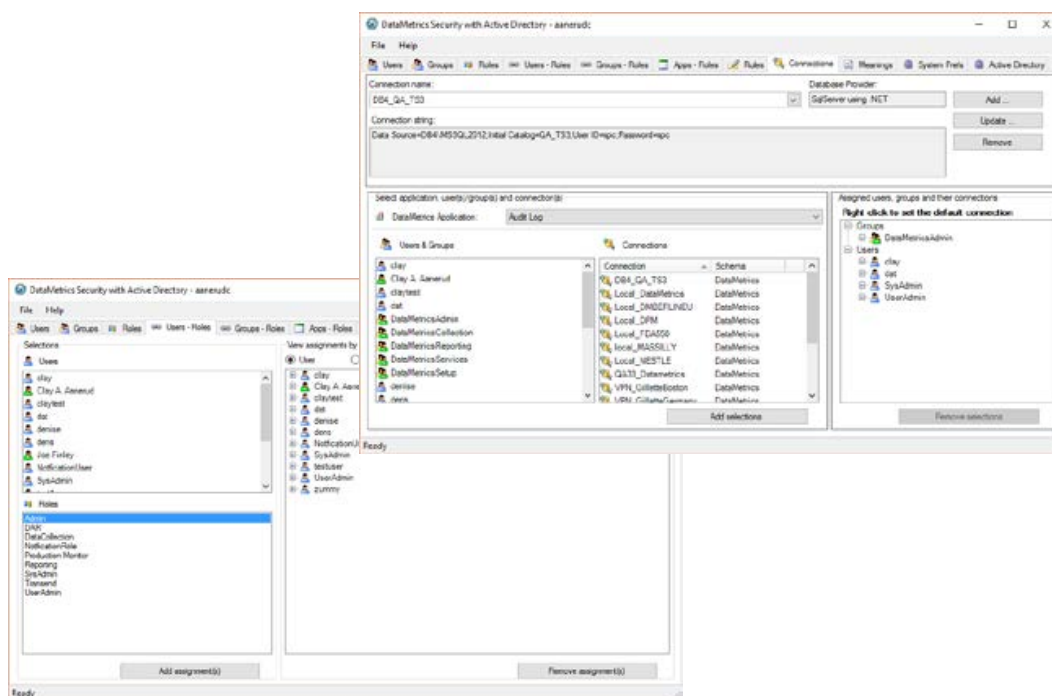
Local Database Cache keeps you going, even when your database connection is down. Factory-floor workstations continue to operate from the local cache and automatically forward data when the database connection again becomes available.

Advanced Security

Protect user integrity. An enhanced and completely independent security system is a standard feature of DataMetrics. It provides a common interface and tool set for managing the security issues for all DataMetrics security-enabled applications. DataMetrics Security allows administrators to create users, define roles for each user, create rules for user actions, define database connections for each user, and much more. This functionality has direct integration with the Active Directory tool.

Active Directory:

- Create DataMetrics Active Directory groups for roles and rights. Once configured, IT manages security by adding or removing users from Active Directory groups.
- Enforces corporate standards for user identity. Allows for concepts such as use of an ID rather than a name for generic identity. Reports can be generated by ID or by name.
- Identify malicious activity more easily.



No substitute for experience. At DATAMYTE, our heritage of helping customers improve overall quality and return on investment goes back more than 40 years, and we continue to be an innovator in factory floor data collection technology. Your DATAMYTE Regional Manager will be happy to provide you with more details on DataMetrics' many benefits for your SPC data collection applications, including a full demonstration of the product's capabilities. Visit our web site at www.DATAMYTE.com for more information.

