

工厂地址：江苏省昆山市宋家港路259号3号楼
华南办事处：广东省东莞市长安镇宵边大街18号邦业商务中心4楼3A09号
粤东办事处：广东省汕头市澄海区H5创江大厦（秀水路北）3-4号铺面

Factory Address: Building 3,259 Songjiagang Road,Kunshan City, Jiangsu Province
South China Office: No.3A09,4th Floor, Bangye Business Center, No.18 Xiaobian Street,Chang'an Town,Dongguan city, Guangdong Province
East Guangdong Office: Shop No. 3-4, Chuangjiang Building (North Xiushui Road), H5, Chenghai District, Shantou City, Guangdong Province

视觉检测解决方案 一站式服务商

One-stop service provider for visual inspection solutions

尺寸测量 size measurement	字符识别 Character recognition	视觉对位 visual alignment
3C电子 3C Electronics	3D视觉 3D vision	精密模具保护 Precision mold protection
缺陷检测 Defect detection	医疗检测 Medical testing	色选分拣 color sorting

雯莫光电科技（上海）有限公司

Wenmo Photoelectric Technology(Shanghai)Co.,LTD

电话 (Tel) : 021-34685418

传真 (Fax) : 021-34685469

网站 (Website) : www.wenmo8.cn

邮箱 (Email) : wm@wenmo8.cn

地址 (Address) : 上海市闵行区颛兴东路999弄38-1号致真楼607

Lane 999, Zhuanxing East Road, Minhang District, ShanghaiNo.38-1 to Truthhouse 607

中国上海市闵行区颛兴东路999弄38-1号致真楼607

雯莫光电科技（上海）有限公司

Wenmo Photoelectric Technology (Shanghai)Co.,LTD

WM-S900 WM-V900系列 模具监控器

WM-S900 WM-V900SERIES PRECISION MOLD MONITOR

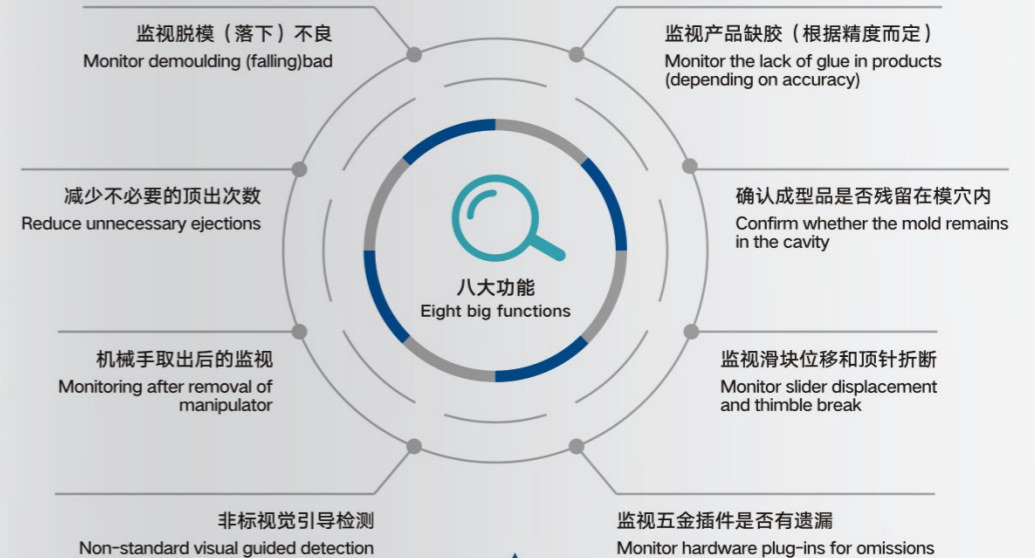


最适合精密成形 高速成形 金属插件成形 多穴成形

It is most suitable for precision forming, high speed forming and multi-hole forming of metal plug

- 全铝材质一体机
便携操作、抗干扰
All-aluminum material all-in-one machine portable operation, anti-interference
- 高速处理
High speed processing
- 高解析德国/日本相机
High Definition German/Japanese Camera
- 卧式注塑机检测
Horizontal injection molding machine inspection
- 立式注塑机检测
Vertical injection molding machine inspection
- 双色注塑机检测
Two-color injection molding machine inspection
- 压铸机检测
Die casting machine inspection detection
- 冲床机检测
Punch machine inspection
- 非标视觉检测
Non-standard visual guided detection

用途 USE



导入效果 Effect of import

防止模具损坏
Prevent mold damage
减少模具维修费用
避免延误交货
Reduce tooling maintenance costs and avoid delivery delays

缩短成型
循环时间
Shorten the molding cycle time

防止混入
不良品
Prevent mixing with defective products

注塑机、压铸机、冲压机模具安全防护利器

Injection molding machine, die casting machine, punching machine mold safety protection sharp tool

注塑模具作为注塑制品加工最重要的成形设备且模具成本昂贵，所以模具安全很重要。因此，提高模具安全，延长使用周期，是注塑行业面临的重要课题。

WM-S900、WM-V900系列精密模具监控器，是我司先进的图像处理软件搭配工控机、相机、光源共同组成的模具监控保护装置，针对注塑模具生产过程中遇到的各种异常问题进行检测，避免模具因产品未脱落、顶针、滑块、金属插件或其它异物等造成的模具损坏，起到保护作用，可广泛适用于卧式机、立式机、双色机、压铸机、冲床等需要模具的机型，保证生产的持续稳定性。

Injection molds are the most important forming equipment for the processing of injection molded products, and the cost of the molds is expensive, so the safety of the molds is very important. Therefore, improving the safety of molds and prolonging the service life is an important issue faced by the injection molding industry.

WM-S900、WM-V900 series precision mold monitor is a mold monitoring and protection device composed of our advanced image processing software, industrial computer, camera and light source. It detects various abnormal problems encountered in the production process of injection molds and avoids mold It can protect the mold from damage caused by the product not falling off, ejector pins, sliders, metal inserts or other foreign objects. It can be widely used in horizontal machines, vertical machines, two-color machines, die casting machines, punches and other machines that require mold type, to ensure the continuous stability of production.

液晶电视行业背板检测方案
LCD TV Industry Backplane Inspection Solution

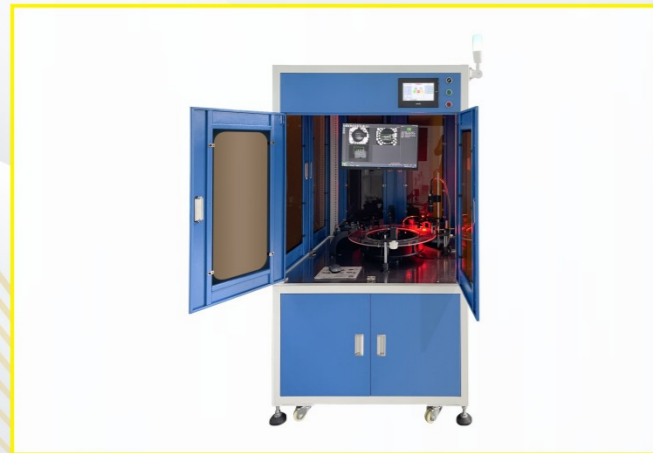


液晶电视行业专用检测设备，主要功能检测液晶电视背板可见辅料、隐藏辅料规格、有无、可定制在线检测和独立检测；
检测完成后将数据传输至云端数据库，不良品标记。

Special testing equipment for the LCD TV industry, the main function is to detect the visible accessories, hidden accessories specifications, presence or absence of the LCD TV backplane, customizable online testing and independent testing;

After the inspection is completed, the data is transmitted to the cloud database, and the defective products are marked.

多工位CCD筛选方案
Multi-station CCD screening scheme



代替人工全检产品（可检测产品缺料，异物，黑点，尺寸不良，划伤等）、提高生产效率、降低不良率、根据产品非标定制，兼容性强。

检测效率：采用雯莫高精度视觉软件检测效率100-2000PCS/分钟（实际效率根据产品要求和体积）

应用行业：汽车电子、医疗耗材、电子连接器、金属螺丝螺母、五金件、塑胶件、橡胶件、密封件、新能源电池行业等

Instead of manual full inspection of products (it can detect product lack of materials, foreign bodies, black spots, poor size, scratches, etc.), improve production efficiency, reduce defective rates, customize products according to non-standard products, and have high compatibility.

Detection efficiency: Using Wenmo high-precision vision software, the detection efficiency is 100-2000PCS/min (actual efficiency depends on product requirements and volume)

Application industry: automotive electronics, medical consumables, electronic connectors, metal screws and nuts, hardware, plastic parts, rubber parts, seals, new energy battery industry, etc.

镶件注塑金属零件尺寸不良检测、产品水口水口剪切方案
Dimensional defect detection of insert injection-molded metal parts, product nozzle shearing scheme



针对金属埋入注塑前的金属零件进行检测,采用雯莫高精度视觉软件和控制系统, 注塑前检测金属件内径和外径尺寸、规格不良等内容, 实现尺寸全检。

代替人工配合机械手放置金属件
产品注塑完成后剪切水口, 摆盘

For the detection of metal parts before the metal is embedded in injection molding, Wenmo high-precision vision software and control system are used to detect the inner diameter and outer diameter of metal parts, defective specifications, etc. before injection molding, so as to realize full size inspection.

Instead of manually cooperating with the robot to place metal parts
After the product injection is completed, the nozzle is cut and the plate is placed.

冲压末端检测方案
Stamping end detection scheme



设备采用伺服电机驱动的方式, 在线连续动态进行每个产品100%检测, 当检测到不良品时, 报警并停止冲床工作。

单、双轨道设计, 单料带与双料带同系列产品可以共用。

设备产能: 跟随冲床冲压速度实时动态检测, 确保冲床SPM500次/分钟内可正常跟随检测。

设备检测能力: A. 背光源成像, 检测产品外形轮廓, 多料、漏冲孔、变形、特征缺失不良。

B. 尺寸测量精度: 精度为0.02mm。

The equipment is driven by a servo motor to continuously and dynamically perform 100% inspection of each product online. When a defective product is detected, it will alarm and stop the punching work.
Single and double track design, single material belt and double material belt can be shared with the same series of products.

Equipment capacity: Real-time dynamic detection following the punching speed of the punching machine to ensure that the punching machine can follow the detection normally within 500 times/min of SPM.

Equipment detection capability

A. Backlight imaging to detect product outlines, excess material, leakage of punching, deformation, and defective features.

B. Dimensional measurement accuracy: the accuracy is 0.02mm.

物流称重贴标系统方案
Logistics weighing and labeling system scheme



采用进口嵌入式热转印打印引擎作为核心部件, 配备工控计算机及PacEasy专用程序软件进行控制

贴标方式: 气动, 气吹, 转角贴, 直接贴等, 可满足不同场合、不同位置的贴标要求兼容性, 中/英文标签编辑软件, 打印内容编辑灵活、实用

控制方式: 以太网与主系统连线, 实时管理整个系统, 减少现场电脑等硬件配置

贴标速度: 80件/分钟(与产品、标签尺寸、贴标方式有关)

贴标精度: ±2mm(不计产品和标签误差)

称重: ±0.2g

贴标位置: 顶面、侧面、转角贴

标签尺寸: 最大200mm(长)×100mm(宽); 最小15mm(长)×20mm(宽)

打印内容: 文字, 流水号, 日期, 图形, 一、二维条形码, 其它可变信息

用途: 快递面单、物流监控、防伪溯源

Using imported embedded thermal transfer printing engine as the core component, equipped with industrial computer and PacEasy special program software for control
Labeling methods: pneumatic, air blowing, corner sticking, direct sticking, etc., which can meet the labeling requirements of different occasions and different positions. Strong compatibility, Chinese/English label editing software, flexible and practical for printing content editing.

Control method: Ethernet is connected to the main system, manages the entire system in real time, and reduces hardware configuration such as on-site computers

Labeling speed: 80 pieces/min (related to product, label size, labeling method)

Labeling accuracy: ±2mm (excluding product and label errors)

Weighing: ±0.2g

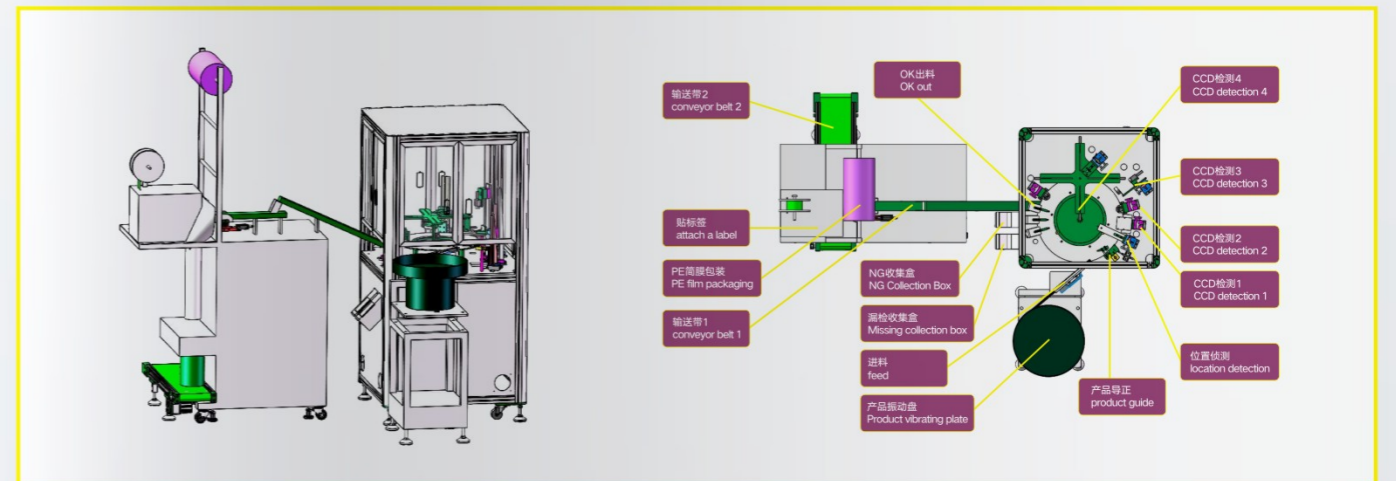
Labeling position: top, side, corner stickers

Label size: maximum 200mm (length) x 100mm (width); minimum 15mm (length) x 20mm (width)

Print content: text, serial number, date, graphics, one- and two-dimensional barcodes, and other variable information.

Uses: Express delivery, logistics monitoring, anti-counterfeiting traceability

产品品质检测末端打包定制方案
Product quality testing terminal packaging customized solution



塑胶产品缺陷检测+自动打包贴标设备

根据不同产品定制, 可检测缺胶、毛边、划伤、异物、尺寸等不良内容, 检测效率100-1000PCS/分钟, 检测完成良品按数量装袋, 不良品剔除。

Plastic product defect detection + automatic packaging and labeling equipment

Customized according to different products, it can detect bad contents such as lack of glue, burrs, scratches, foreign objects, size, etc., with a detection efficiency of 100-1000 PCS/min.



雯莫注塑行业IIOT解决方案 WENMO Connects Different Worlds

注塑业痛点 THE PAIN POINT OF INJECTION MOLDING INDUSTRY

老旧设备多
设备维护不科学，异常停机多
设备协议不一，无法沟通
设备品牌混杂，年限不一
Lots of old equipment
Equipment maintenance is unscientific, and there are many abnormal shutdowns
The device protocol is different and cannot communicate
Equipment brands are mixed, with different ages

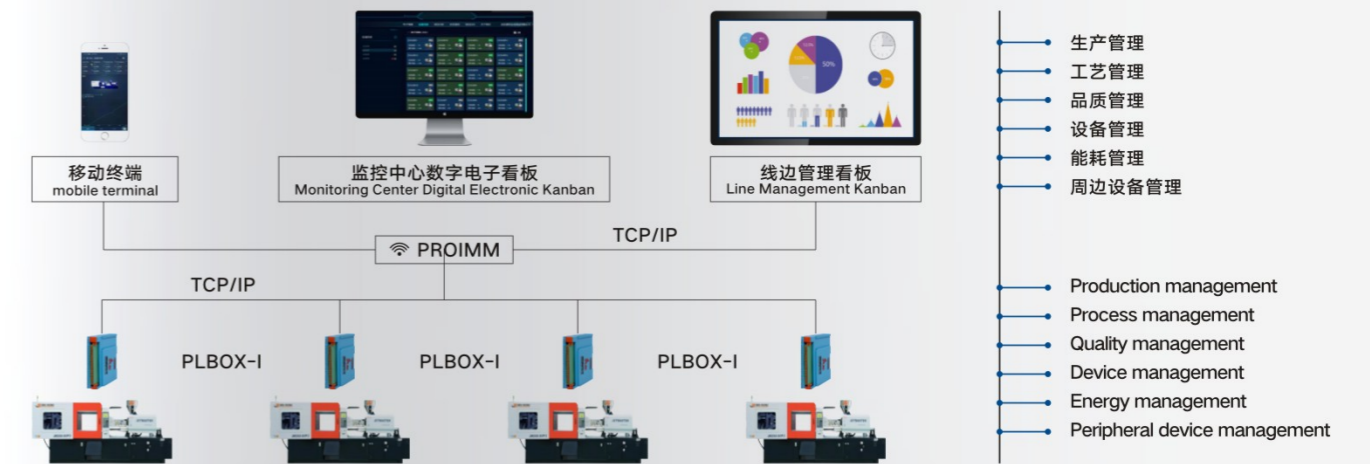
工艺管理落后
过度依赖老师傅，无法记录存档
无法实时监控，影响产品品质
过程无数据分析，难以持续优化
Process management is backward
Excessive reliance on the teacher, unable to record and archive
Unable to monitor in real time, affecting production quality
There is no data analysis in the process, and it is difficult to continuously optimize

毛利持续走低
信息化是订单利润提升关键
竞争激烈，缺核心竞争力
纯代加工，利润透明
Gross profit continues to decline
Informatization is the key to improving order profit
Intense competition and lack of core competitiveness
Pure OEM processing, transparent profit

生产效率不佳
员工能力不一，难管理
管理决策无数据作为支撑
排单不合理，设备利用率低
Poor productivity
Different abilities of employees, difficult to manage
Management decisions without data to support
Unreasonable order scheduling and low equipment utilization

注塑行业信息采集完整方案架构图

Structure diagram of complete scheme for information collection of injection molding industry



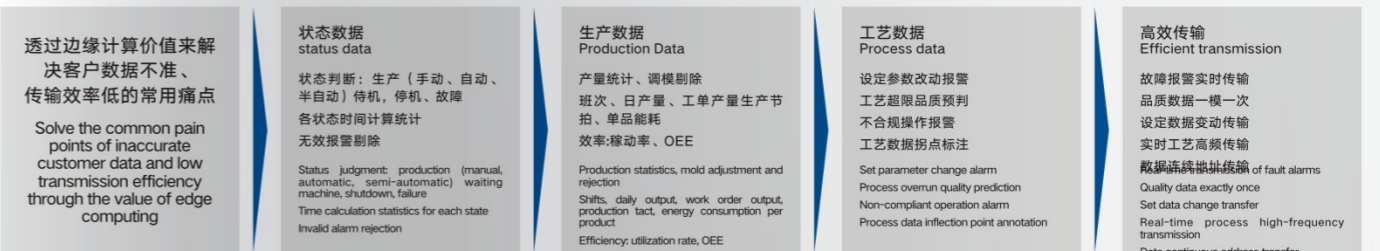
PROIMM主要管理模块

PROIMM main management module



PROIMM的主要亮点

Key Highlights of PROIMM



PROIMM-生产管理
PROIMM - Production Management

01

	生产状态: 运行、手动、半自动、全自动、调模、停机、故障等各种状态持续时间等	Manufacturing state: Duration of various states such as running, manual, semi-automatic, fully automatic, mold adjustment, shutdown, fault, etc.
	产量统计: 班次产量, 昨日产量, 当日产量, 当月产量, 总产量、调模产量、报表导出等	Production Statistics: Shift output, yesterday's output, current day's output, current month's output, total output, mold adjustment output, report export, etc.
	效率管理: 生产进度、预计完成时间、时间稼动率、性能稼动率、OEE、良品率、统计分析等	Efficiency management: Production progress, estimated completion time, time shift rate, performance utilization rate, OEE, yield rate, statistical analysis, etc.

生产全过程数字化, 电子看板、生产进度、设备状态、故障报警、生产统计、效率分析
Digitization of the whole production process, electronic Kanban, production progress, equipment status, fault alarm, production statistics, efficiency analysis

PROIMM-工艺管理
PROIMM - Process Management

02

	生产存储: 工艺配方记录、关键参数存储等	Production Storage: Process recipe record, key parameter storage, etc.
	参数监控: 工艺参数实时监控	Parameter monitoring: Real-time monitoring of process parameters
	参数管理: 工艺参数异常报警、工艺参数异常变动报警、关键工艺品质预判报警等	Parameter management: Process parameter abnormal alarm, process parameter abnormal change alarm, key process quality pre-judgment alarm, etc.

工艺存储、工艺实时监控、工艺异常报警、变动报警、关键工艺品质预判报警、工艺分析优化
Process storage, real-time process monitoring, process abnormality alarm, change alarm, key process quality pre-judgment alarm, process analysis and optimization

PROIMM-品质管理
PROIMM-Quality Management


03

	质量报警: 影响质量的关键参数报警	Quality alarm: Alarms for key parameters affecting quality
	质量追溯: 品质参数存储、质量问题历史数据分析追溯	Quality traceability: Quality parameter storage, historical data analysis and traceability of quality problems
	不良品分析: 不良品原因统计分析	Defective product analysis: Statistical analysis of the causes of defective products

品质参数存储、异常报警、关键品质产生报警、历史曲线分析、不良品统计、追溯分析
Quality parameter storage, abnormal alarm, key quality alarm, historical curve analysis, defective product statistics, retrospective analysis

PROIMM-周边设备管理
PROIMM - Peripheral Device Management

04

	实施监控: 运行状态、故障报警、关键参数实时监控	Implement monitoring: Real-time monitoring of running status, fault alarm and key parameters
	设备维保: 设备台账、设备维保提醒、维保计划、维保记录等	Equipment maintenance: Equipment ledger, equipment maintenance reminder, maintenance plan, maintenance record, etc.
	控制协同: 实现设备与注塑过程协同	Control coordination: Synergy between equipment and injection molding process

注塑周边设备包括混料机、干燥机、模温机、冷水机、机械手、碎料机的实时及监控维护保养。
Real-time and monitoring maintenance of injection molding peripheral equipment including mixer, dryer, mold temperature machine, chiller, manipulator, and crusher.

合作案例 模具监控器
Cooperation case Mold monitor



合作案例 视觉检测方案
Cooperation case Visual inspection solution

