



## Expandable Modular House

Expandable container house is your innovative choice to meet the needs of prefabricated accommodation.

# Expandable Modular House

## MAIN ADVANTAGES

1 Easy export  
/transportation

2 Expandable Feature

3 Quickly installation

4 Reusability  
and scalability

5 Long lifecycle  
>20years

6 Appearance  
Full customized

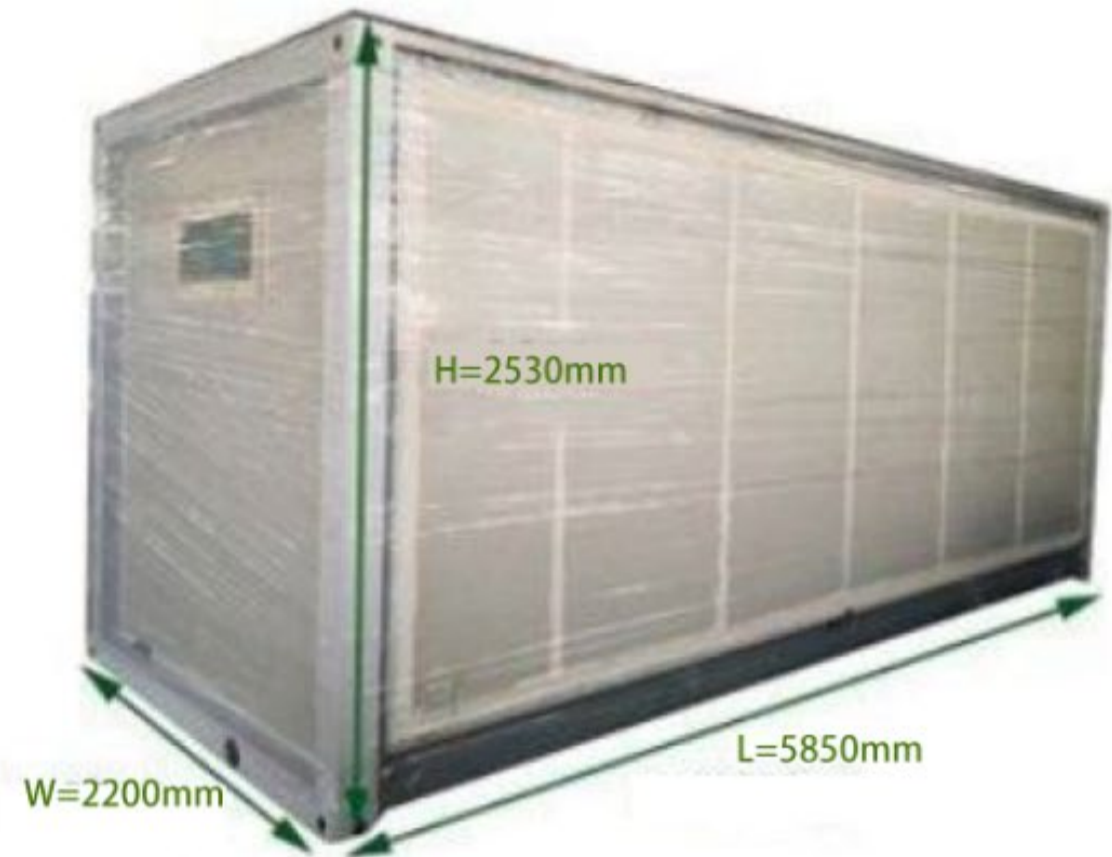


1

## Easy export /transportation

- Outer Dimension 6400\*5850\*2530
- Inner Dimension 6160\*5560\*2240

- Folded Dimension 2200\*5850\*2530  
(When transportation)



**2 sets** per 40HQ container, it can be easily transport with standard container via normal logistic route.

This is for 2 bedrooms config, if smaller ones, the container could fit more, to save the logistic fee and raise efficiency.



2

## Flexible and convenient



Expandable modular house can be quickly unfolded and folded up, providing a high degree of flexibility and convenience. This makes them very practical in situations where temporary accommodation or offices are needed, such as temporary dormitories on construction sites, exhibition areas, temporary offices, etc. It can also be permanent house too.

3

## Quickly installation



✓ Easy installation  
4 workers +10 mins= 1house

The installation of expandable modular house is very easy. Pull and push, then you complete the basic installation within 10 minutes. This efficient installation process is designed for time saving and labor saving, well considered for temporary projects or emergency situations that a rapid deployment is required.



4

## Reusability and scalability

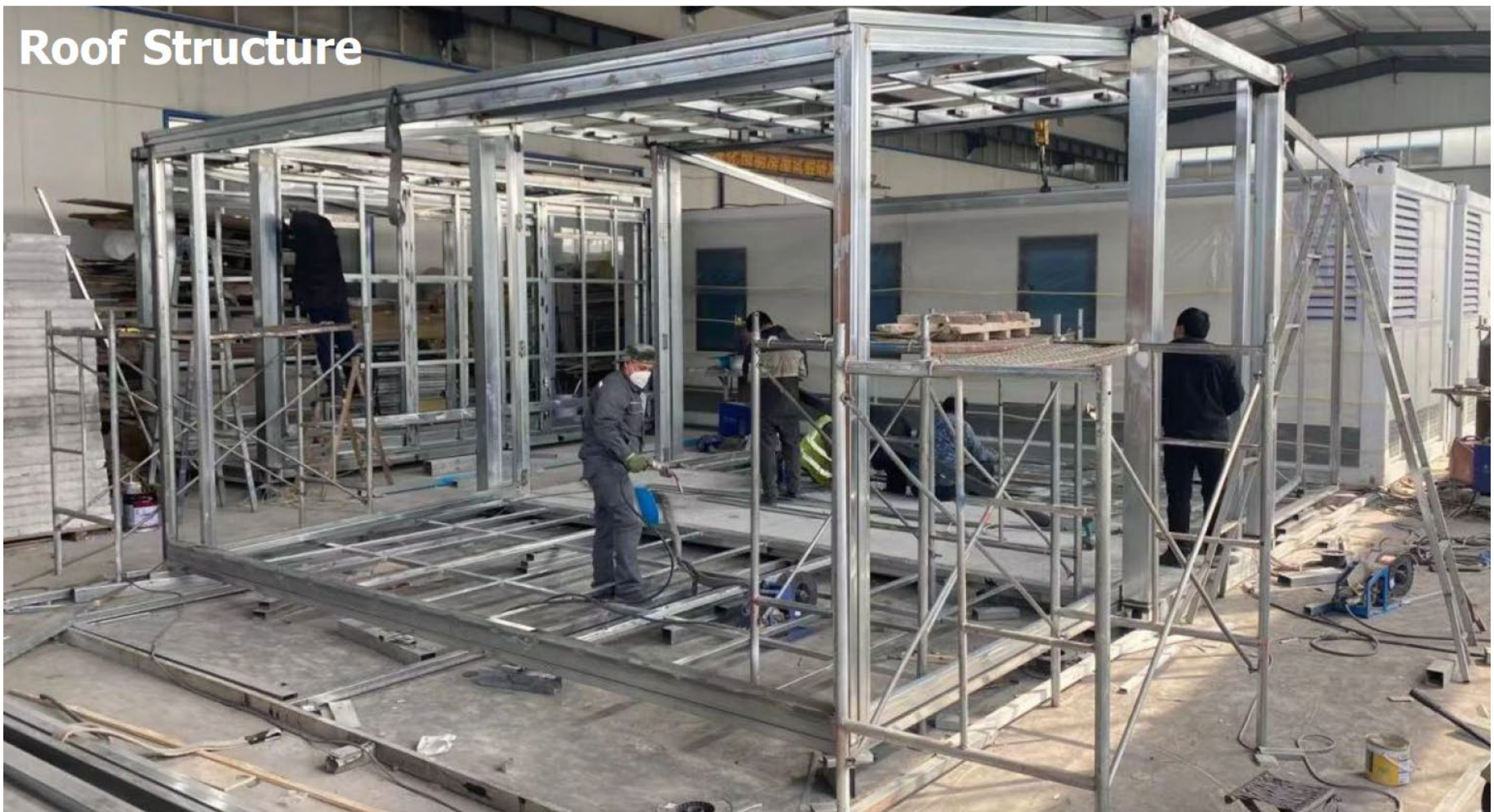
Expandable modular houses have good reusability and scalability. They can be disassembled and assembled multiple times, it can be expanded or rearranged when needed. This allows it to be high flexibility and adaptability in different scenarios and needs.

5

## Long lifecycle >20years

The whole modular houses is sitting on a steel frame base, itself also made by frame structure. Wind resistance Grade 9, Waterproof and Dustproof IP68, The product is designed to stand more than 20 years.

### Roof Structure



6

Appearance  
Full customized



Camping



Home



Hotel



Resort house



Movable house



Office



Military camp



Prefab hospital

# Different layouts



One living room, One bedroom  
One restroom



One living room, One bedroom  
One restroom



One living room, Two bedrooms  
One restroom



One living room, Two bedrooms  
One restroom



One living room, Three bedrooms  
One restroom



One living room, Three bedrooms  
One restroom



Four bedrooms, One restroom



Customized Office

Customized design available



Interior image



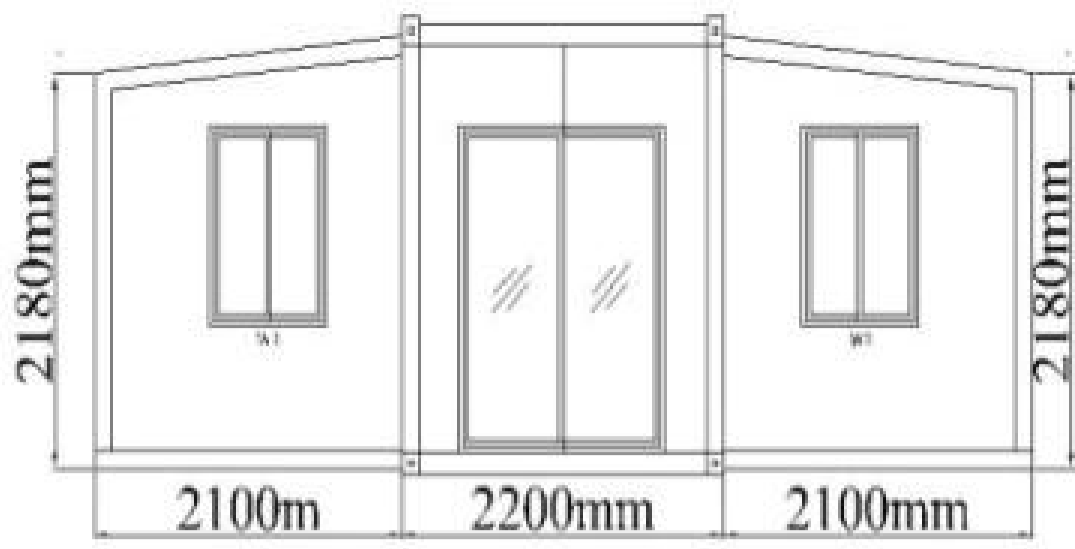
Terrace optional



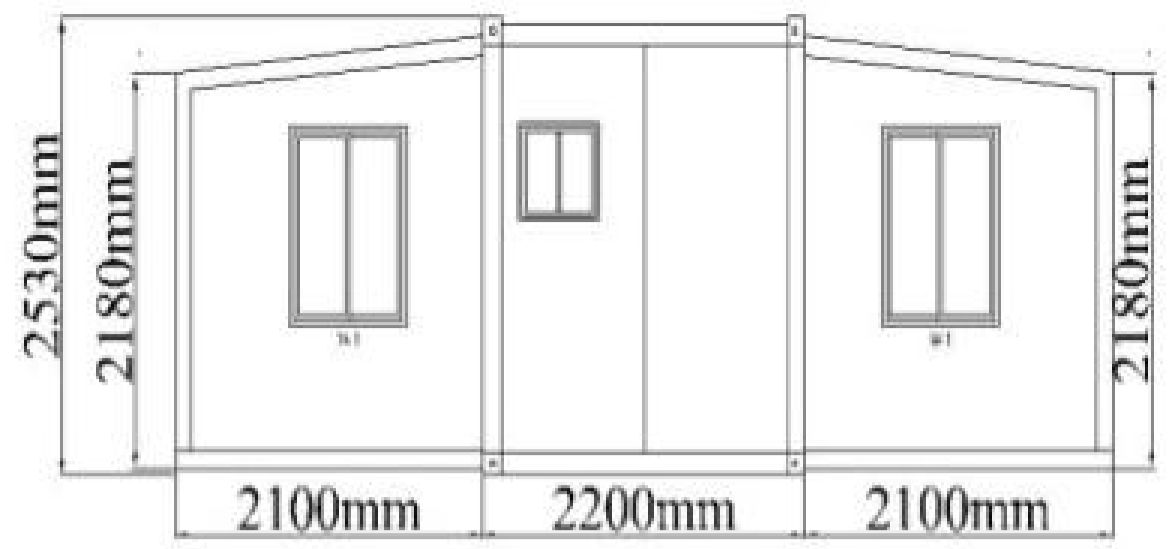


## Configuration

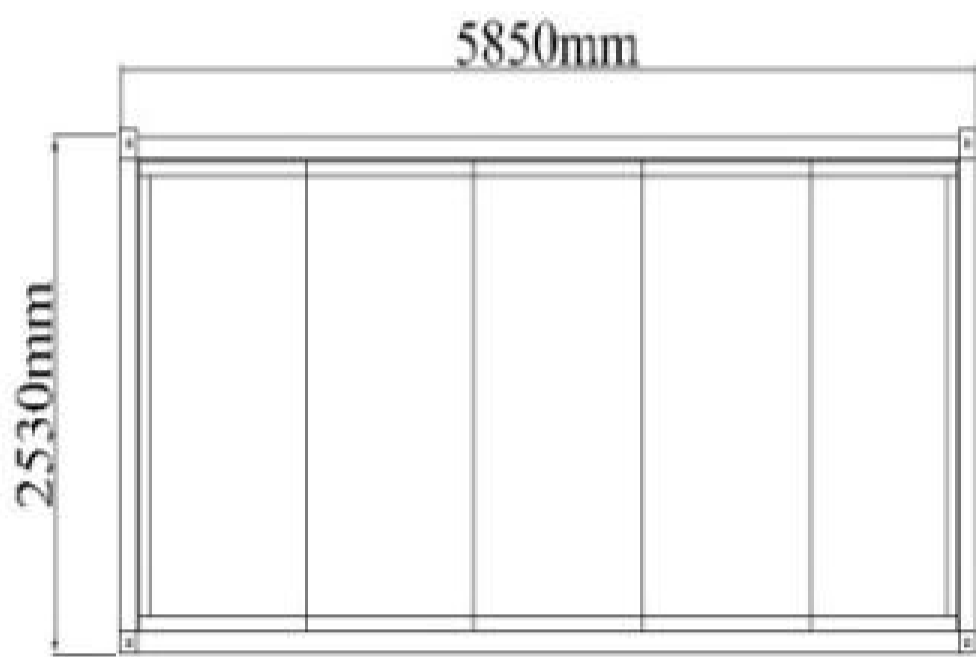
Basic feature	External dimension (mm)	6320*5900*2480mm
	Internal dimension (mm)	6160*5560*2240mm
	Folding state (mm)	2200*5900*2480mm
	Total mass (kg)	3000kg
Frame structure	Middle top bottom girder	80*100*T2.5mm Q235B
	Middle column	150*210*T2.5mm Q235B
	8 lifting heads	150*210*160*T4mm Q235B
	Middle top bottom purlin	40*60*T1.5mm Q235B
	Side top bottom frame	60*80 40*80*tl.5mm Q235B
	Side top bottom purlin	40*60*tl.5mm Q235B
	Side waterproof protective plate fold	T2.5mm Q235B
	Fold Hinge	130mm galvanized hinge
	Overall frame anti-corrosion coating	Electrostatic spray molding/straight white plastic powder
Box top	External roof panel	EPS board
	Internal suspended ceiling	20 Profiled gusset plate
Wallboard	main body	75eps board
	Side roof panel	50eps board
	Internal partition	50mmeps board
Floorboard	Intermediate floor	Fireproof glass magnesium floor 15mm
	Floor on both sides	Bamboo floor
Electrical system	<p>Electrical wiring shall be installed in strict accordance with moisture-proof specifications, and all electrical products shall comply with CE certification. Connect the circuit according to the electrical engineering specifications. Indoor: 4 LED ceiling lights, 3 five-hole single opening sockets, 1 single opening socket, 3 10-hole sockets, 1 air conditioning socket, and 1 20A leakage protector.</p> <p>Voltage 220V.50HZ</p>	
Entrance doors	Heat-Insulated double doors	
Window	5 aluminum alloy windows (each 920*920mm)	
Toilet	Closestool+Wash basin+Shower	Integrated shower room
National standard wires	International socket (Customizable)	



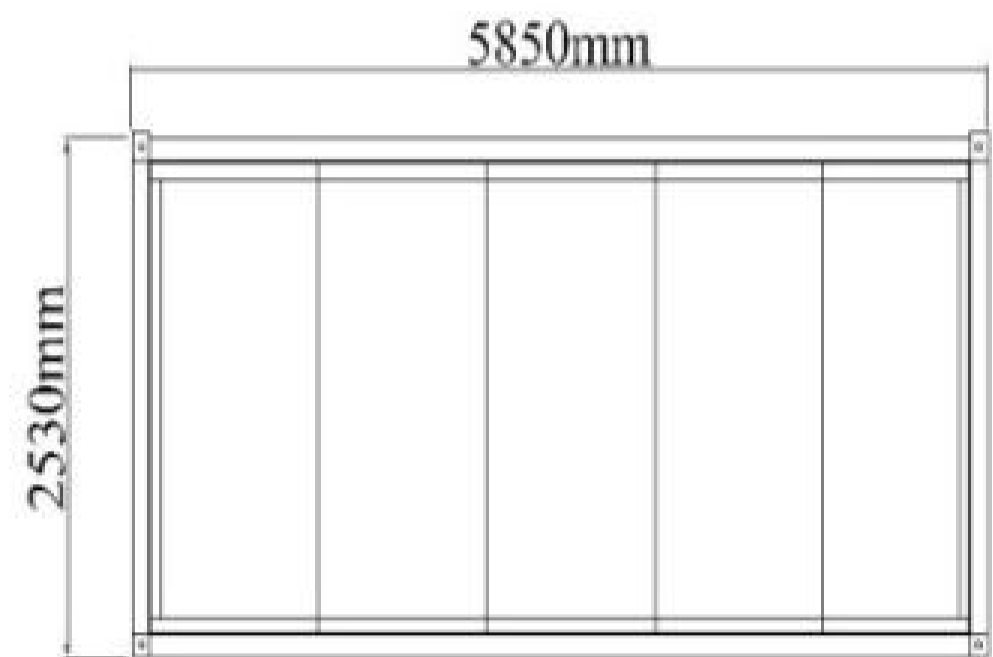
Front Side view



Back Side view

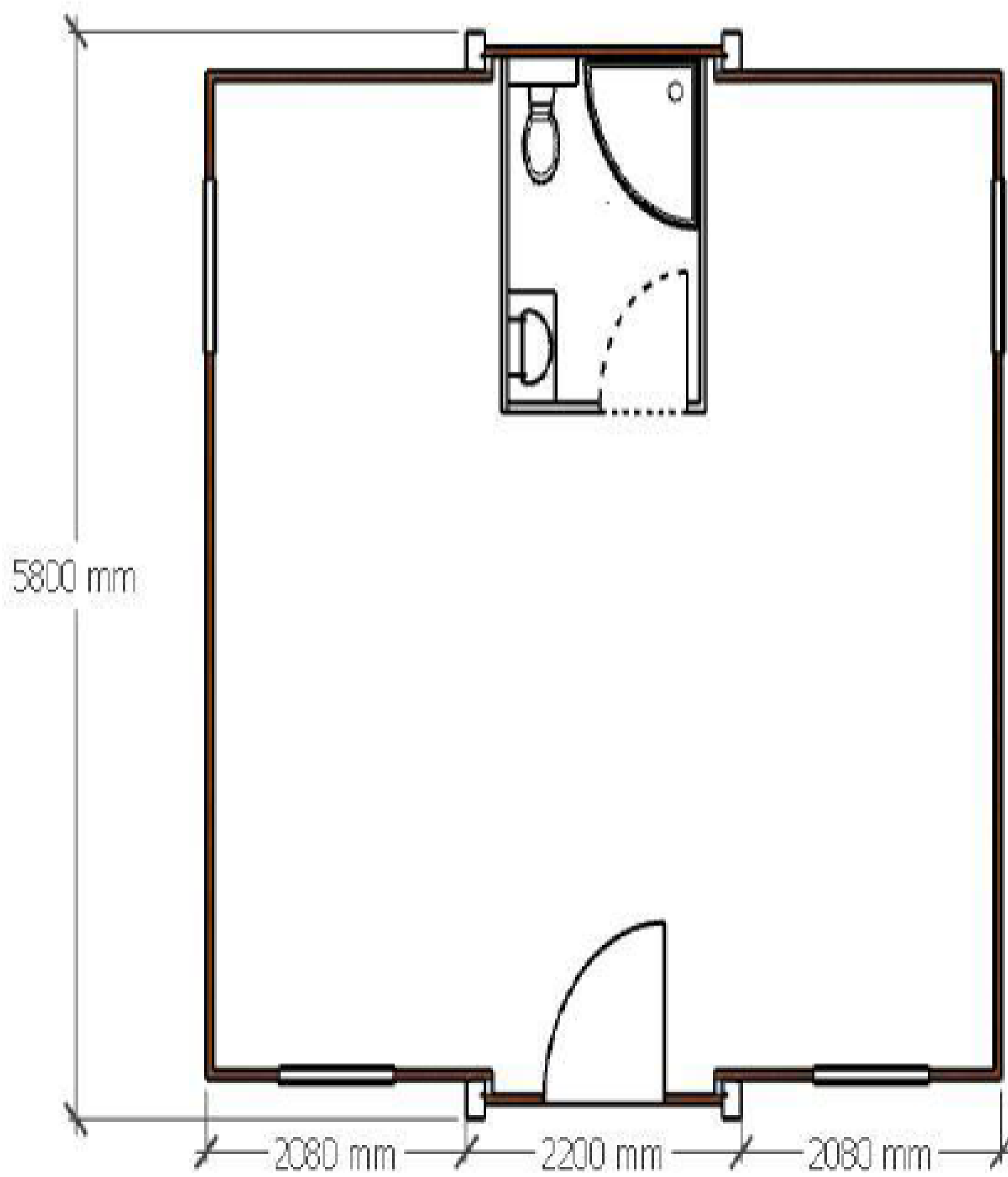


Left Side view

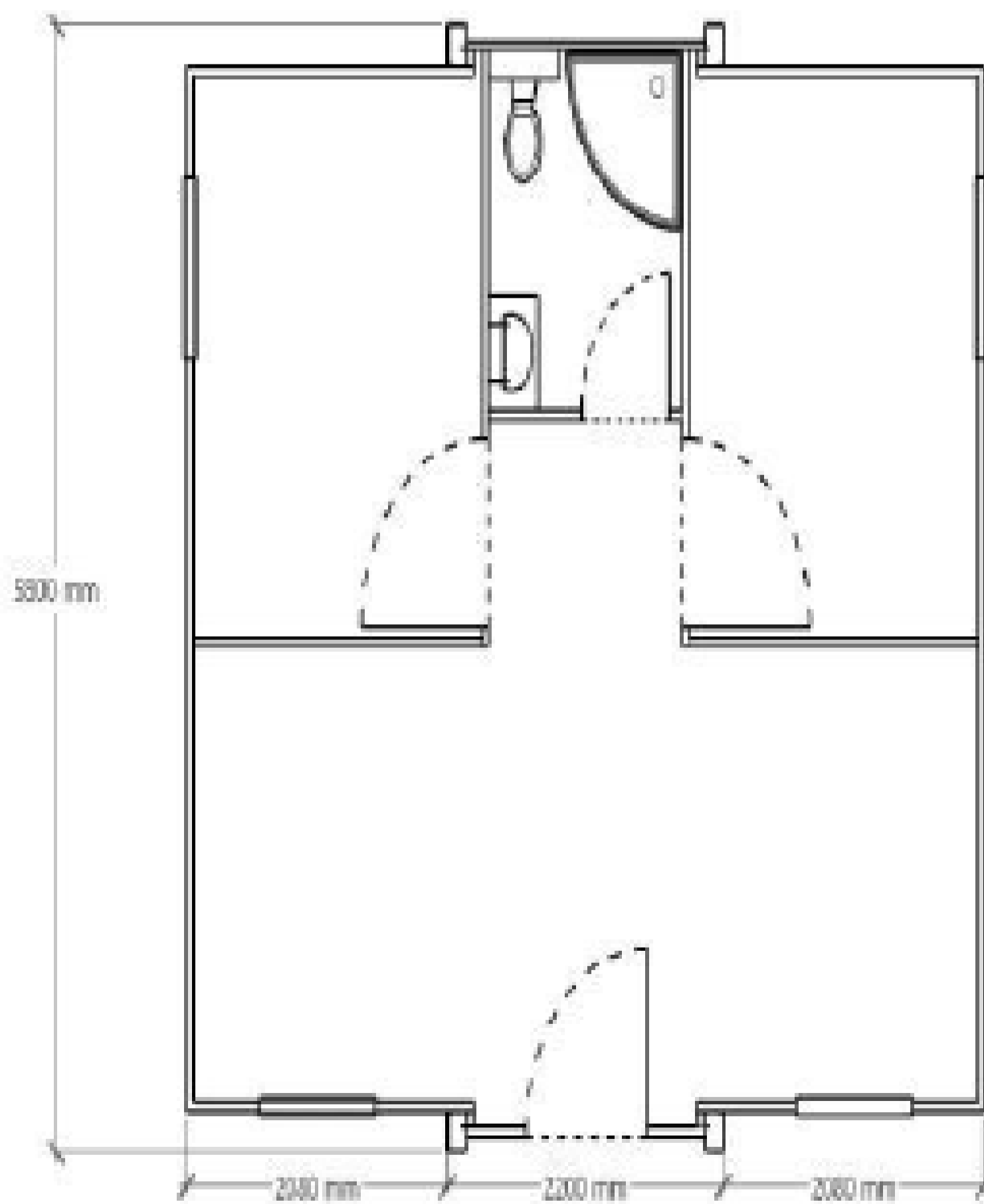
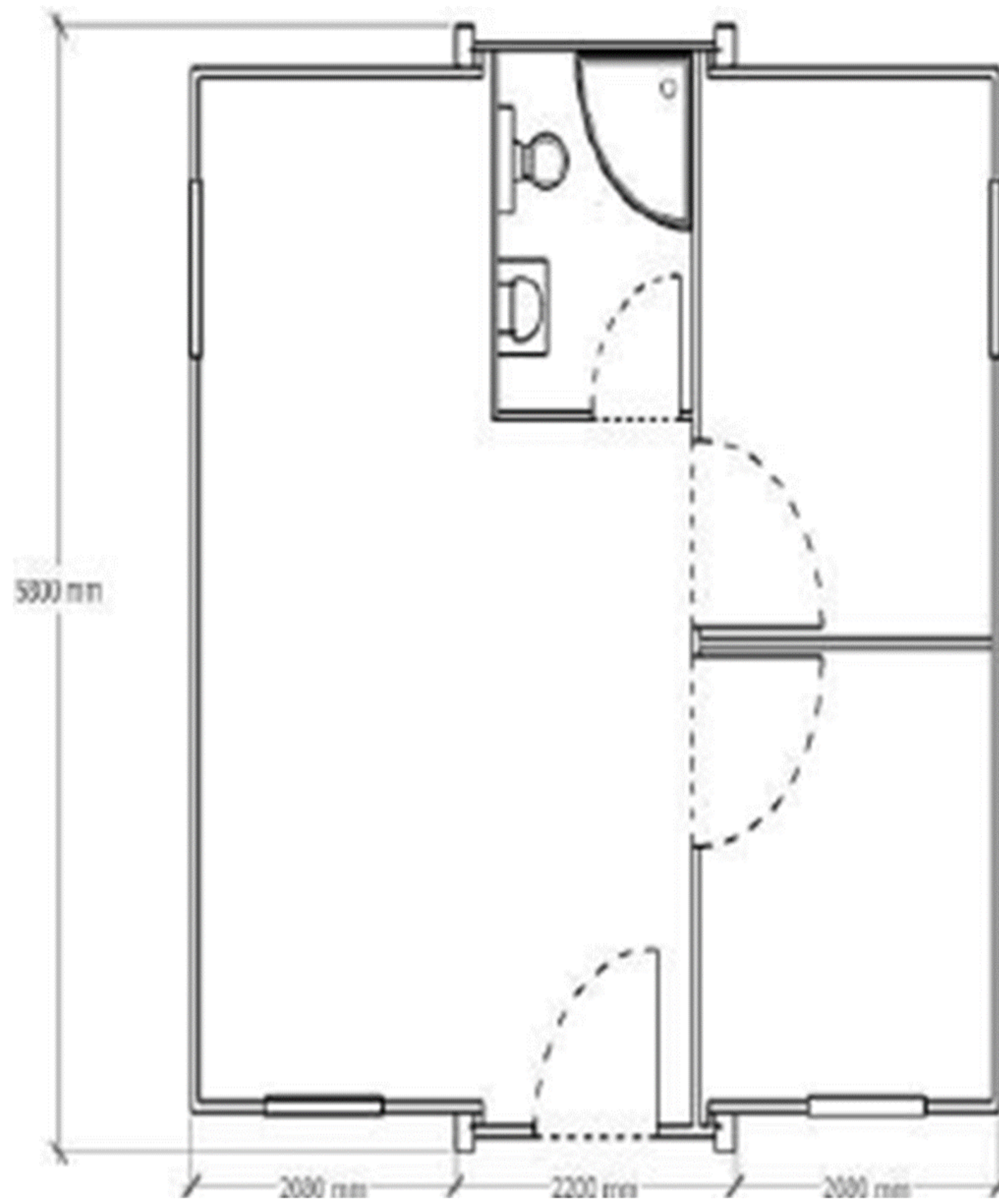


Right Side view

### Basic Style



## 2 Bedrooms, 1 living room





## Jinhua ZhongXing Communication Technology Co., LTD

E-Mail: [GlobalSales@jhzxct.com](mailto:GlobalSales@jhzxct.com)

Office site: [www.jhzxct.com](http://www.jhzxct.com)

Headquarter: No.448 Shicheng Street, Wucheng District, Jinhua City, Zhejiang Province ,China.

Technical and Sales Center: Room 3408, Building 1, Xinyada International Creative Center,  
No.1750, Jianghong Road, Binjiang District, Hangzhou City,  
Zhejiang Province, China.

Shanghai Office: Room 501, Building 4, 386 Zhijiang West Road, Zhabei District, Shanghai, China.