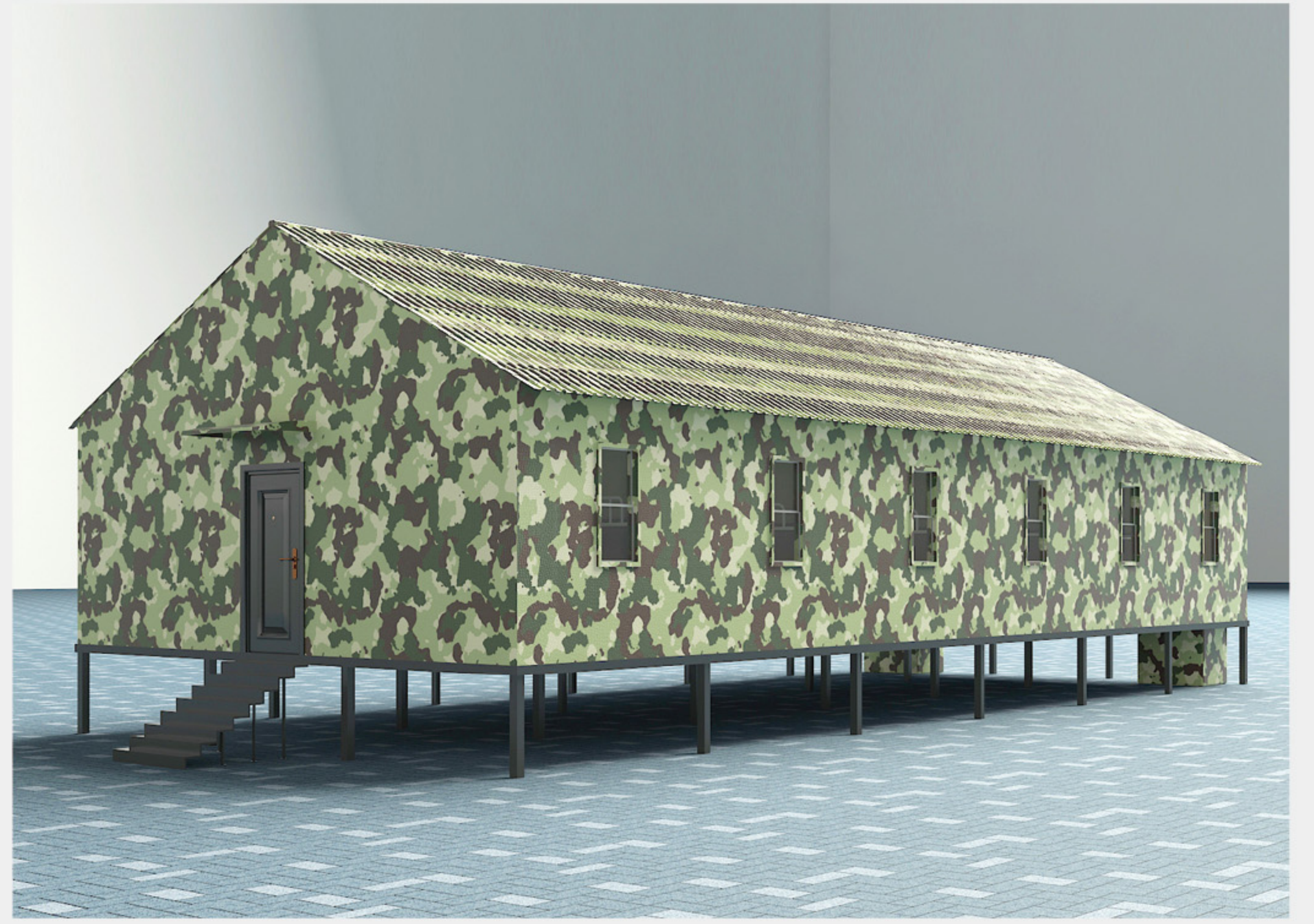


## All-terrain & All-weather Rapid Assembly Military Shelter

Our patent of outdoor security shelter plate leads to a high-robust, weather resistant, fully reusable, all-terrain & all-weather military shelter, also suitable for watch house, command post, and field hospital.

# Military Shelter Structure

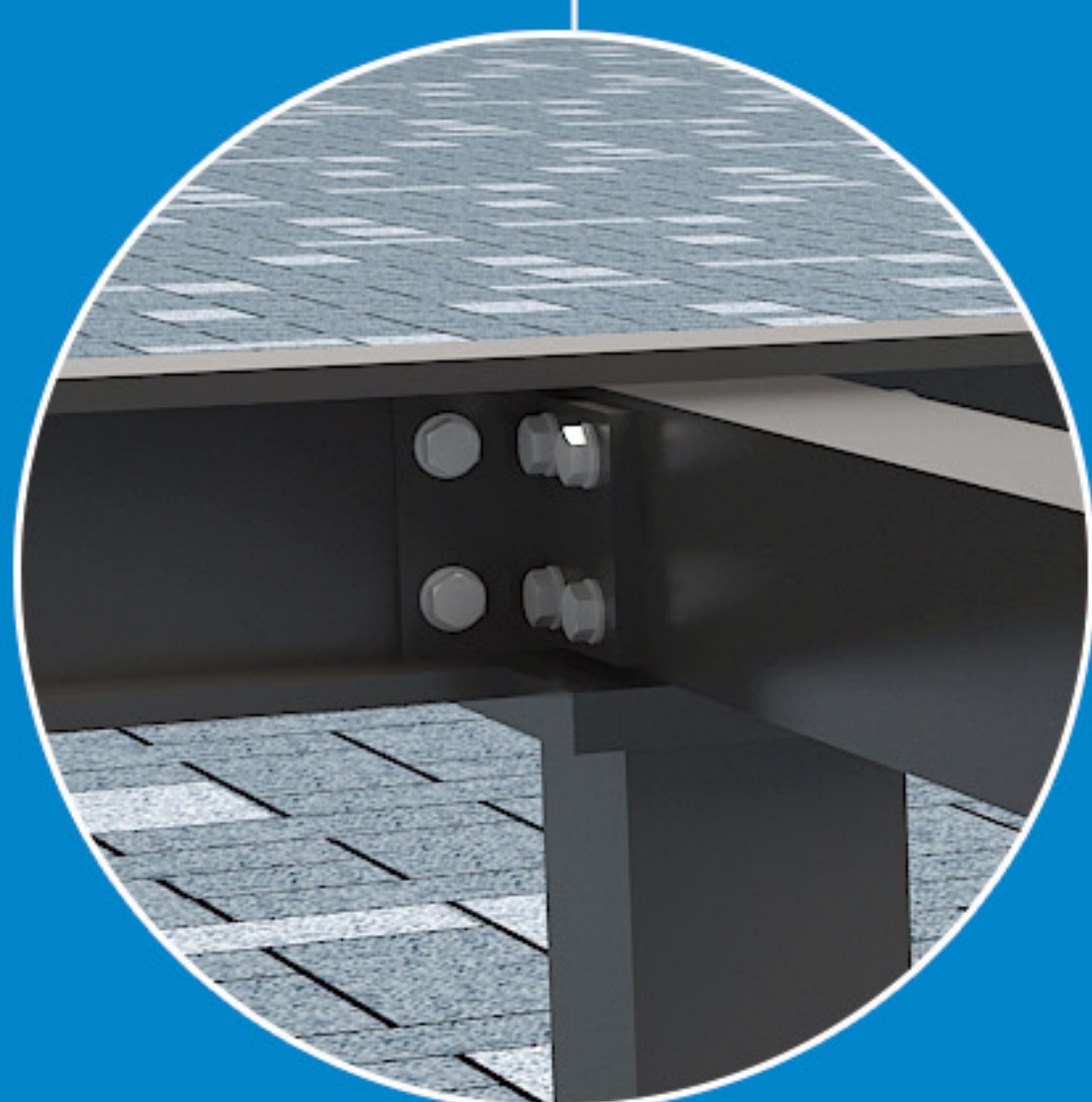
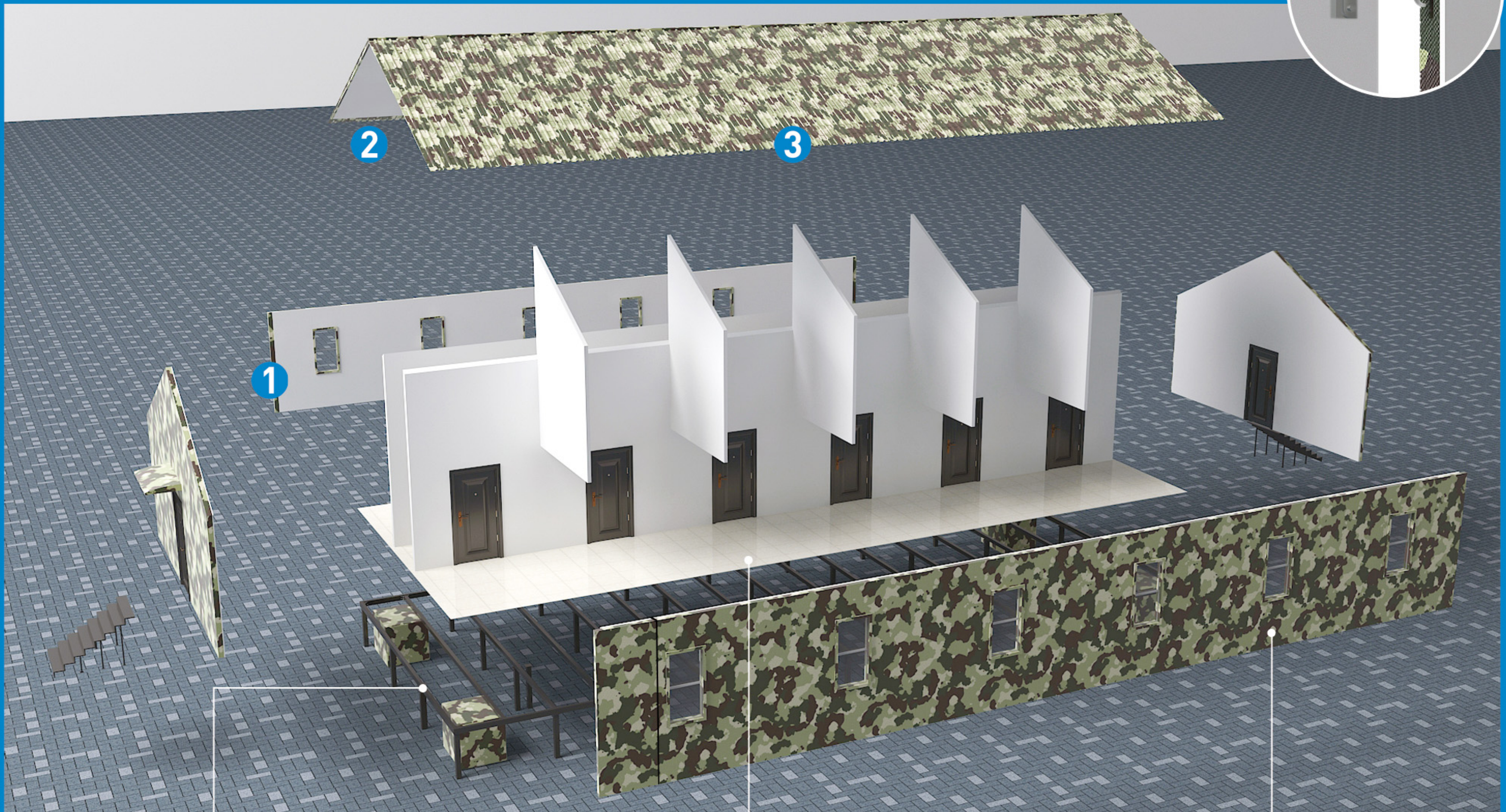
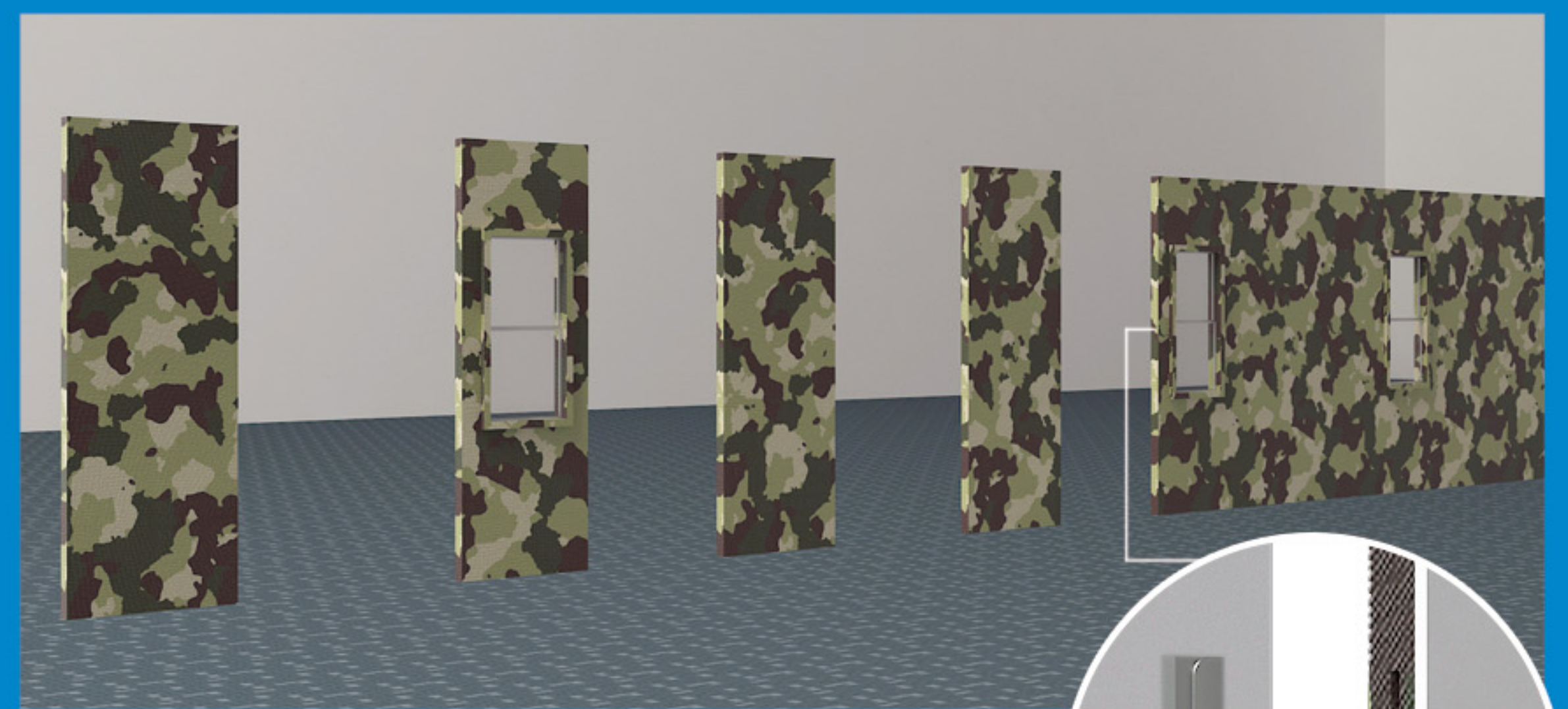
- Robust structure strength that could resist >55m/s wind load, also reusable by rapid assembly or disassembly, the 100m<sup>2</sup> full facility house building up only takes <10hours/4 person.



## Product Features

Modular design, full reusable.

- 1 Eccentric hooks secure the shelter wall plates.
- 2 Eccentric hooks secure the roof and wall plates.
- 3 Roofs secured by eccentric hooks while water proof by corrugated design.



U-steel base structure connected by bolts



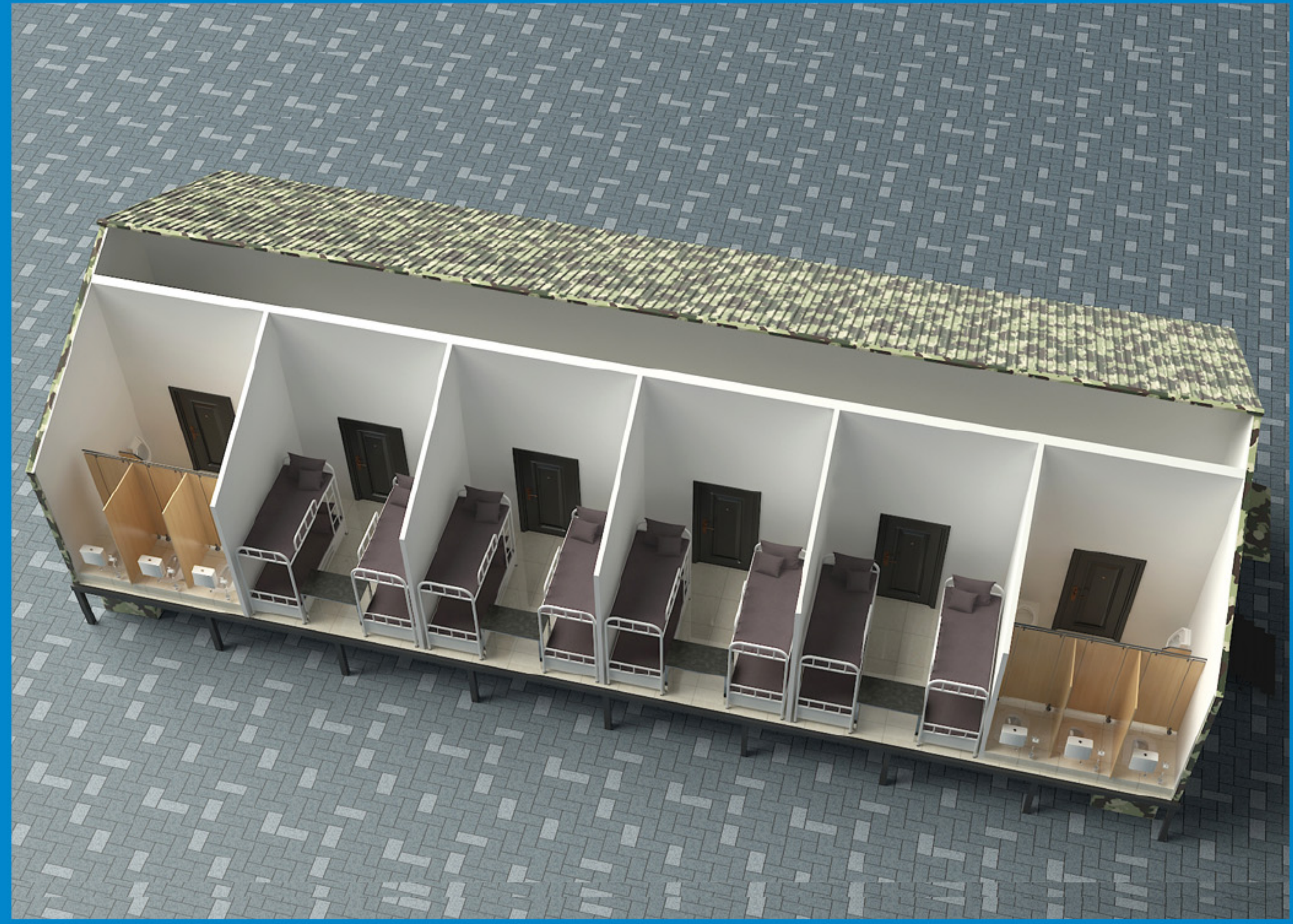
Floor connects to U-steel base by bolts



Side walls connect to U-steel base by bolts

# Washrooms & Shower Rooms Design

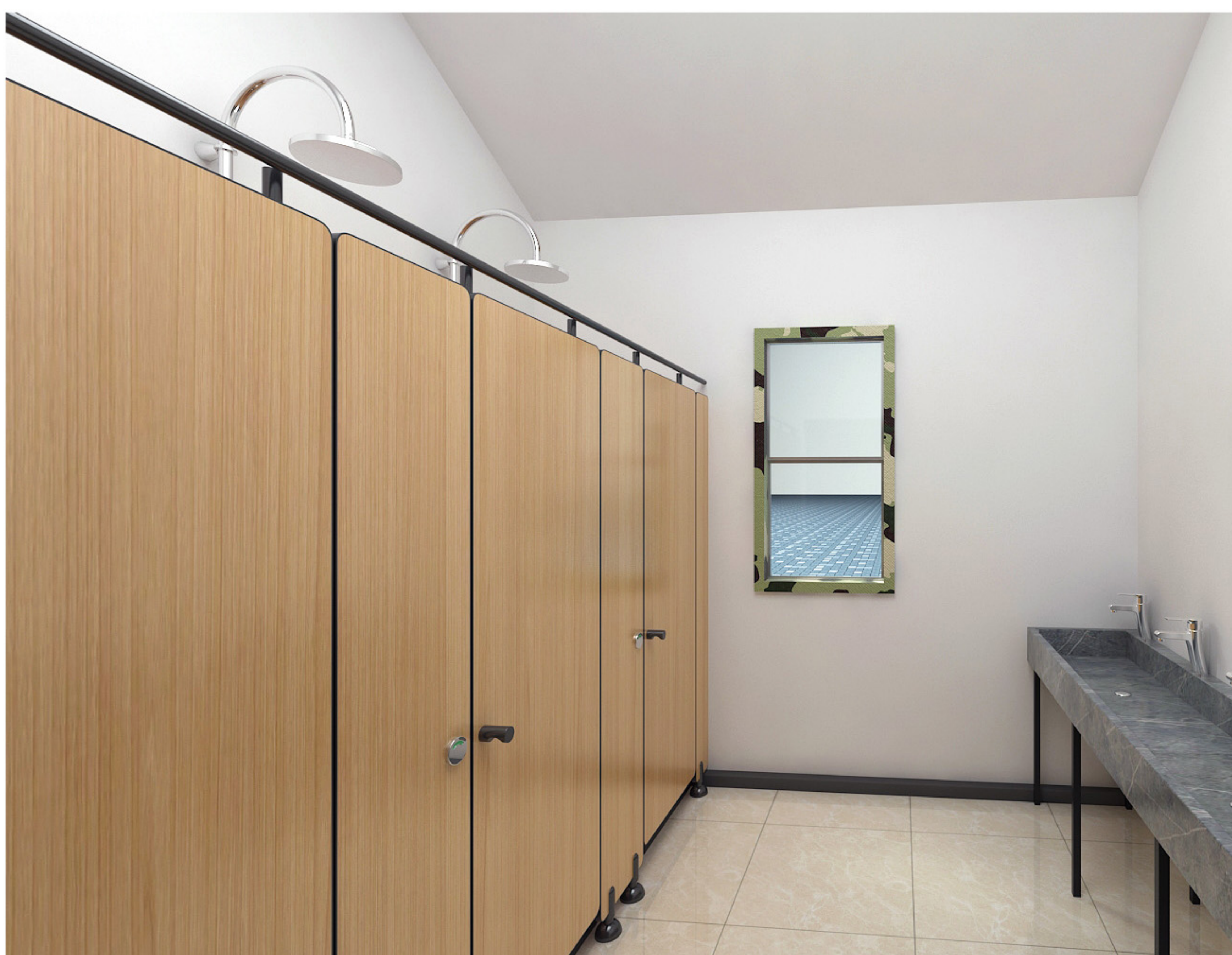
- Highly integrated Washroom & Shower rooms, equipped with full facilities, temperature control, water supply and drainage system (water purification, waste separation, waste water treatment).



## Washrooms



## Shower Rooms





## Jinhua ZhongXing Communication Technology Co., LTD

E-Mail: [GlobalSales@jhzxct.com](mailto:GlobalSales@jhzxct.com)

Official site: [www.jhzxct.com](http://www.jhzxct.com)

Headquarter: Shicheng street #448, Wucheng district, Jinhua Zhejiang, China

Technical and Sales Center: Sunyard International 1-3408, 1750 Jianghong Rd, Binjiang district,  
Hangzhou Zhejiang, China

Shanghai Office: Room 4-501, Zhengjiangxi Rd #386, Jing' an District, Shanghai, China