

# Rapid Expandable

## Automatic Elevating Mobile Military Shelter

Easy for leveling and positioning by the vehicle-mounted elevating mechanism; It is all-terrain and all-weather reusable; Expand and Fold operation <30minites; Utilized our patent wall panel that achieve thermal bridge isolation.

## Structure design of the Automatic Elevating Mobile Military Shelter

- **Size:** 4500\*2000\*2200mm (Transportation status) / 4500\*5600\*2200 (Expanded status)
- **Product Feature:** Easy to operate, high reliability, fast deployment, fit for mobile and transportation. U-steel structure bottom, plus our patent wall panel that achieve thermal bridge isolation, makes the thermal conductivity of the whole shelter  $<0.5W/m^2 \cdot K$ . The shelter comes with 1 door, 2 ceiling glasses, and 4 side windows. Equipped with stainless steel hinge, gas spring support rod for expand panels. The shelter can be automatic elevated, vertical load=8 tons, elevating height up to 1.6m, easy for leveling and positioning. It is all-terrain and all-weather reusable; Expand and Fold operation  $<30$ minites

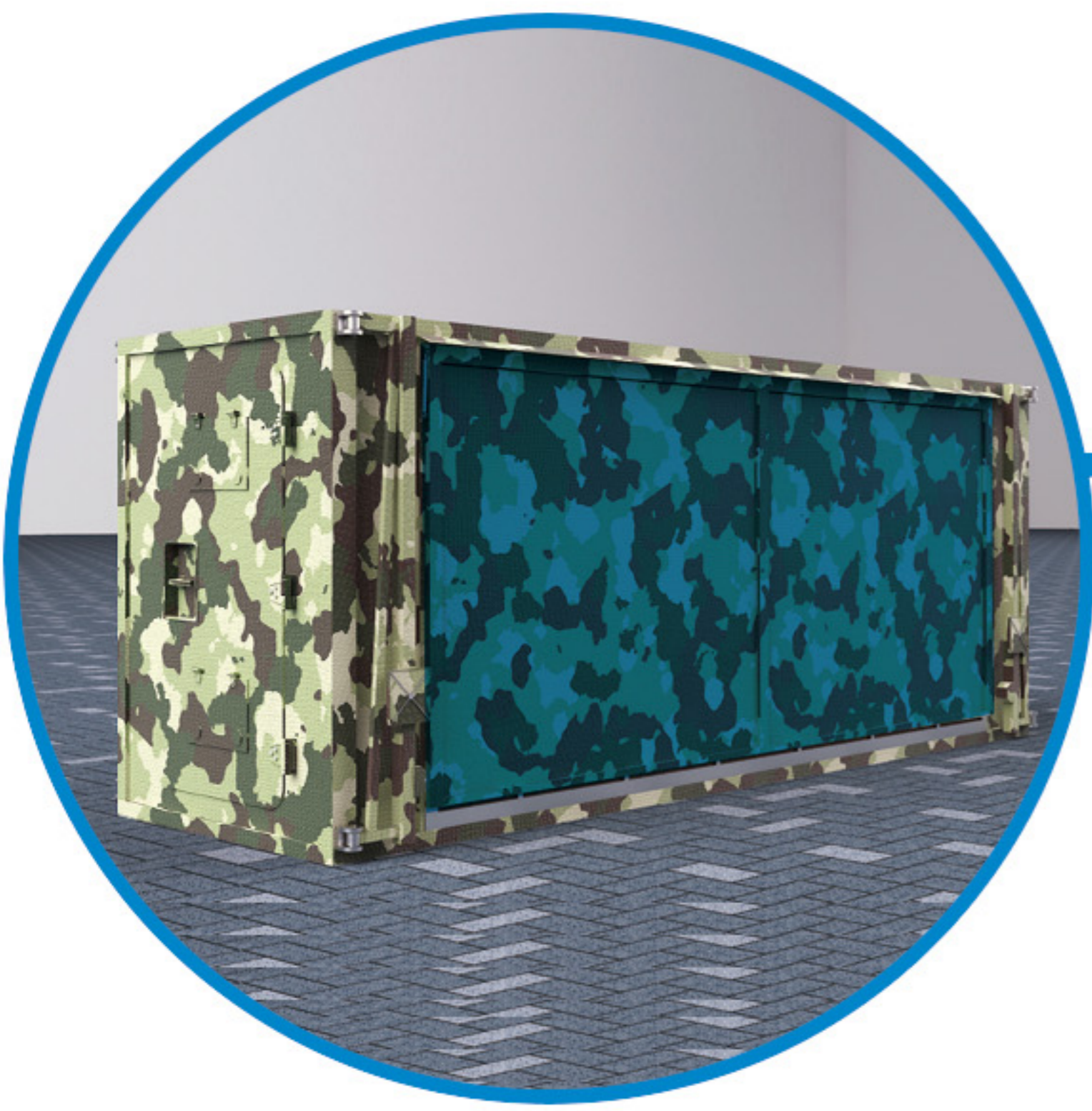
Closed status



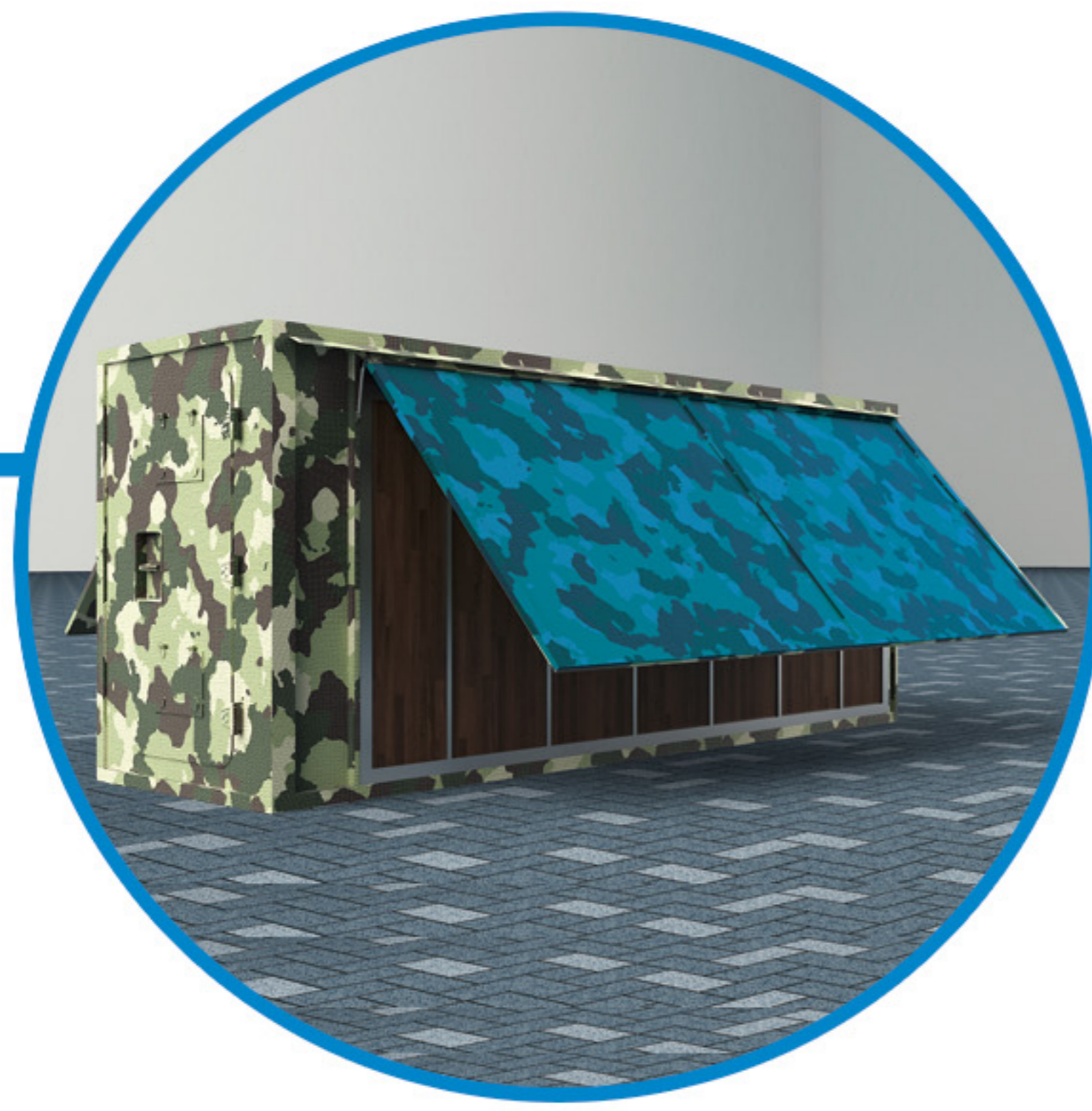
Automatic elevating



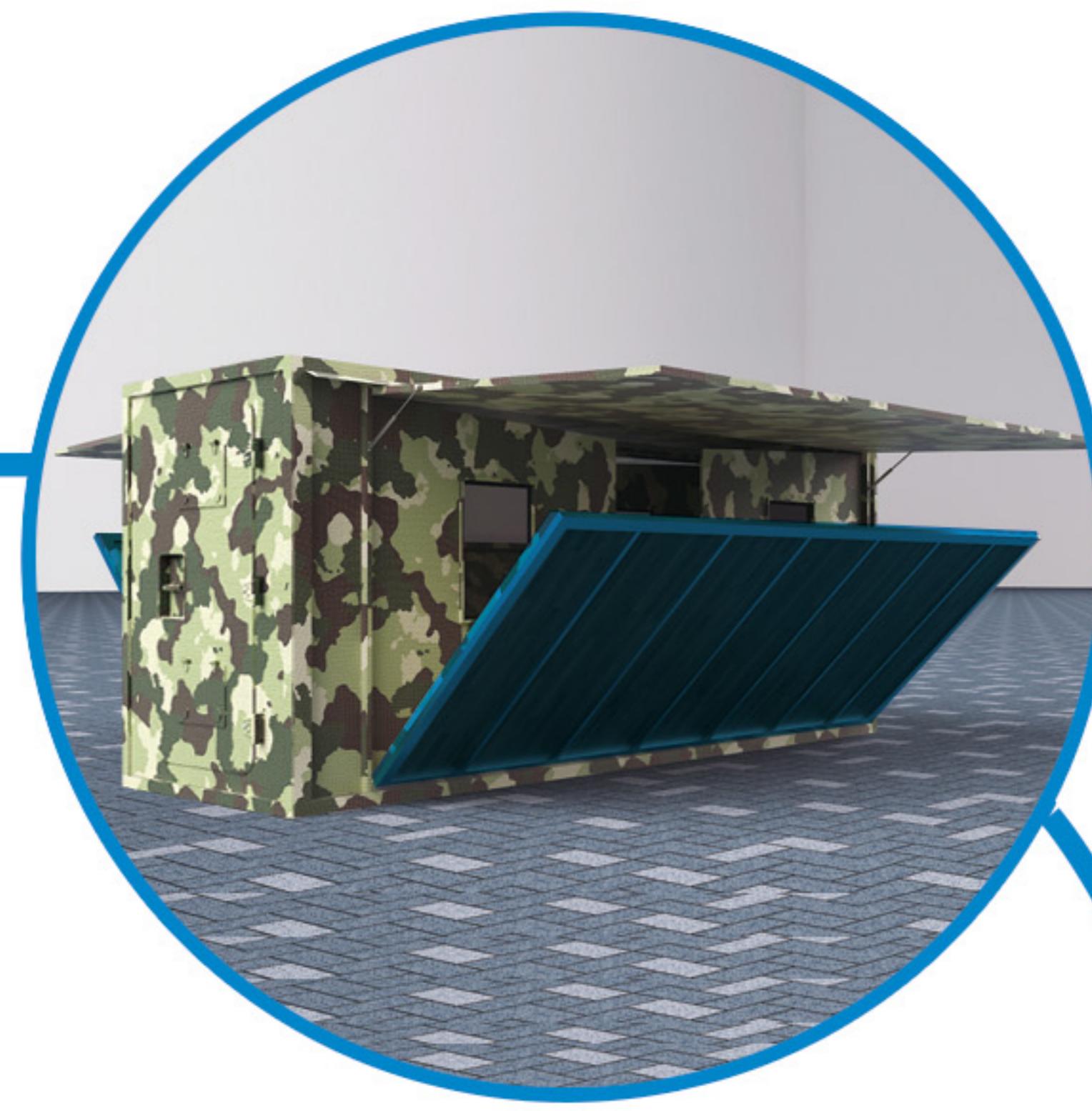
# Expand process



1 Closed status



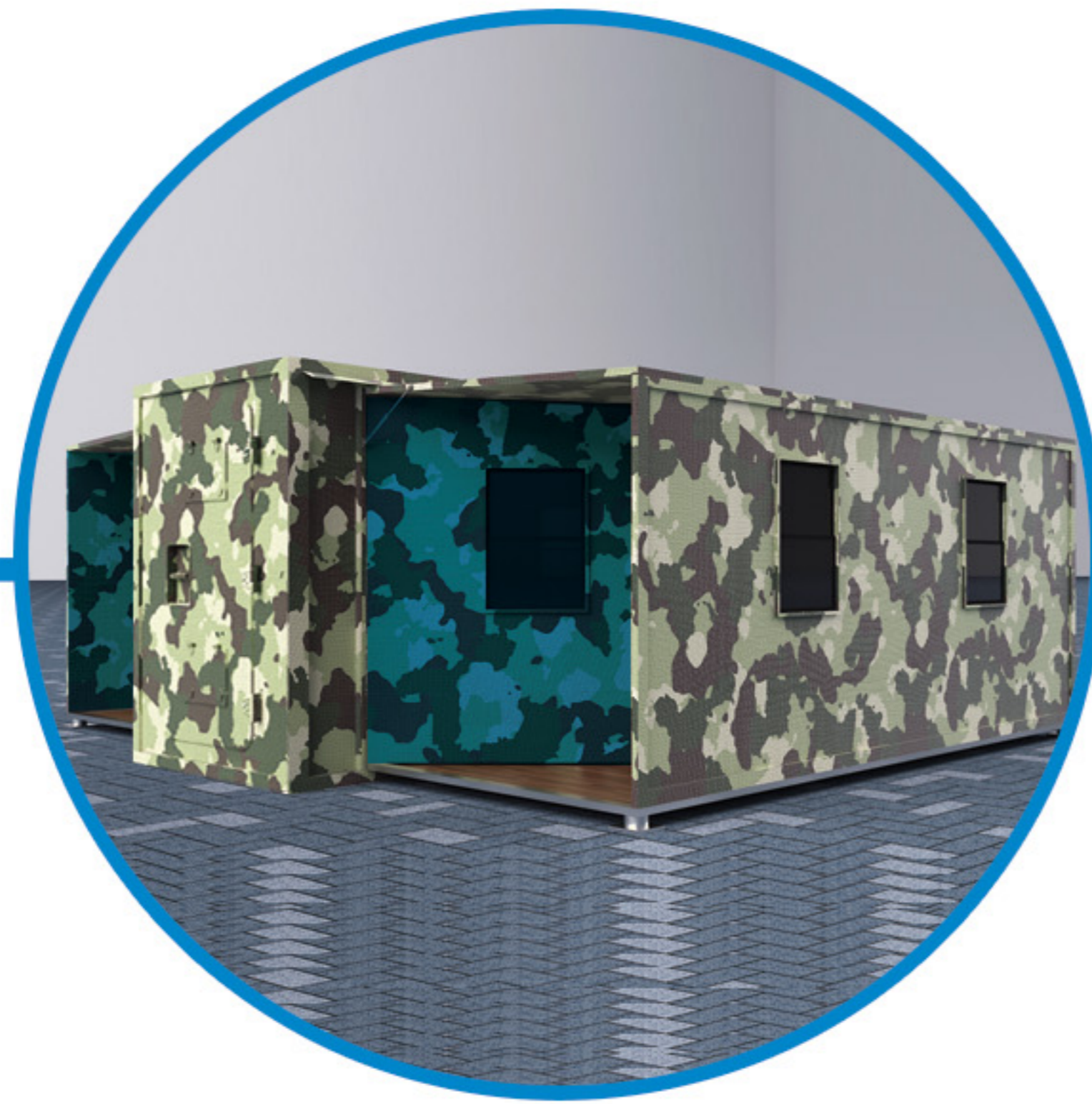
2 Roof expand



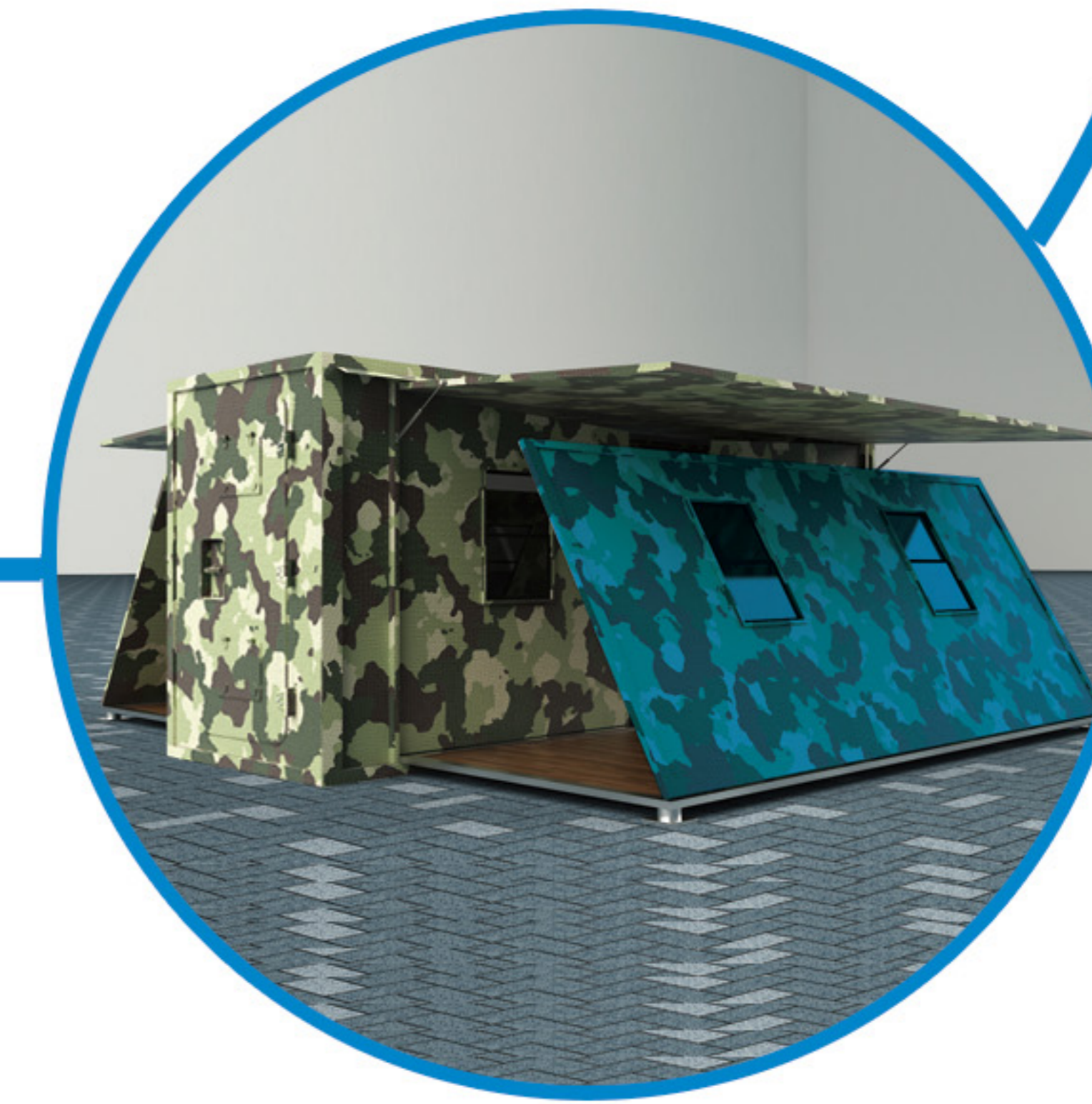
3 Floor expand



6 Full expanded



5 Front-Rear floor lift



4 Side-wall stand



## Jinhua ZhongXing Communication Technology Co., LTD

E-Mail: [GlobalSales@jhzxct.com](mailto:GlobalSales@jhzxct.com)

Official site: [www.jhzxct.com](http://www.jhzxct.com)

Headquarter: Shicheng street #448, Wucheng district, Jinhua Zhejiang, China

Technical and Sales Center: Sunyard International 1-3408, 1750 Jianghong Rd, Binjiang district,  
Hangzhou Zhejiang, China

Shanghai Office: Room 4-501, Zhengjiangxi Rd #386, Jing' an District, Shanghai, China