



WWW.VUEASTON.COM

NO.88 NATIONAL ASSEMBLY STREET, SANGKAT TONLE BASSAC,
KHAN CHAMKARMORN, PHNOM PENH, CAMBODIA

• *INSIDE THE AMAZING* •

CREATE YOUR OWN LIFE STYLE



ELEGANT BY NATURE

Signature living in the heart of
Phnom Penh

THE JEWEL OF THE CROWN, VUE ASTON OF THE PENINSULA

Mekong River, the flowing ribbon connects Phnom Penh with the world,
Chbar Ampov, at the very heart of the great kingdom's capital,
is destined to be prospective and flourishing



AESTHETIC

AQUA

A-CLASS



A MAGNIFICENT LANDMARK

A sculptural new landmark that evokes both a golden epoch
of the past and an exhilarating new chapter



VIEW



VARY

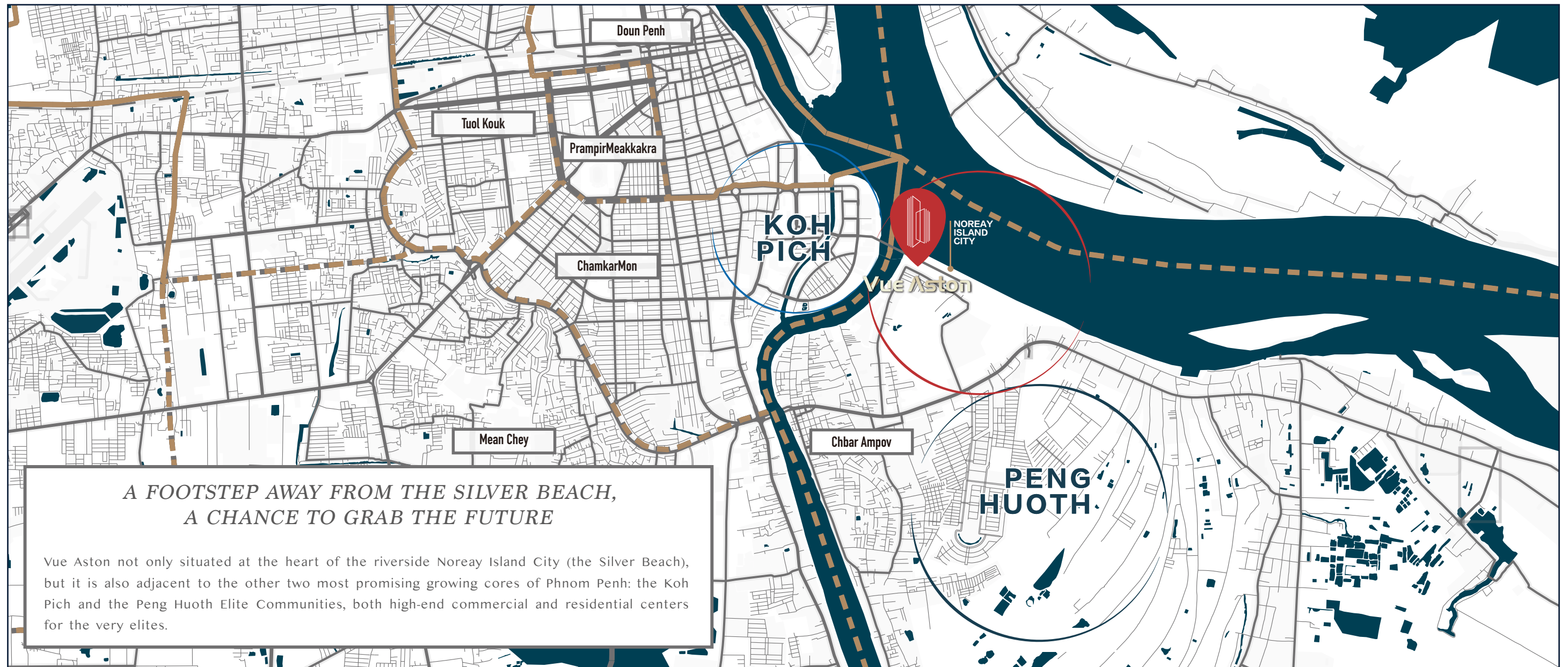


VALUE

PRIME LOCATIONS & CONVENIENT TRANSPORTATION

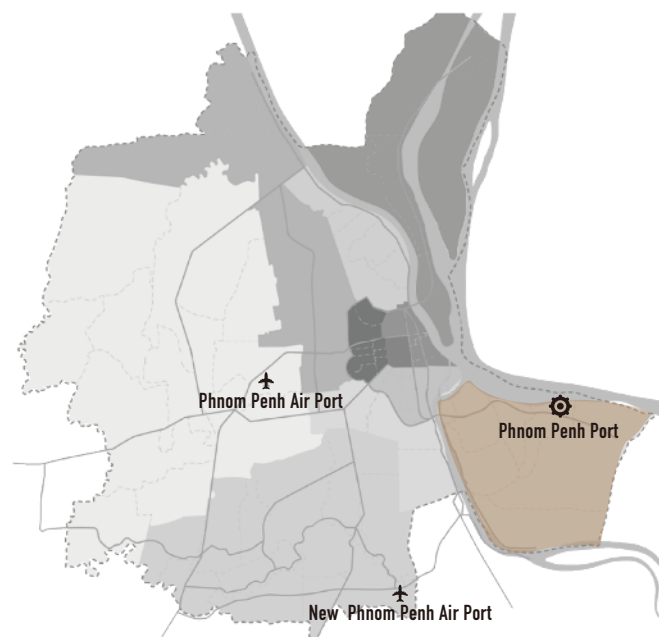
Vue Aston is located in Phum Kaoh Norea, Chbar Ampov district, where the junction of Bassac River and Mekong River takes place. It features high accessibility to the water, land and air transportation hubs. It is only 15 minutes' drive to both the new international airport and the Phnom Penh Port. After the plan of a new bridge linking the Koh Pich and Koh Norea being announced by the government, the residences of Vue Aston will be able to reach the center of Phnom Penh within minutes.





CHBAR AMPOV: SURROUNDED BY RIVERS, UPRISING LIKE A SUPERNOVA

Due to the private ownership of the land, these waterfront land resources are always very rare in Phnom Penh. Among the area close to the city center and near the water, Vue Aston is currently the only area which has a completed and concrete plan of development. It is the plan to build a large riverfront city complex in this very area including residential and commercial buildings, luxury hotels, top-class international schools and other facilities.



PHNOM PENH RING-ROAD: A VIBRANT CITY TALE

As the population of Phnom Penh continues to expand, the city size grows larger constantly. So far the central area has been developed from the 1st ring to the 4th. Vue Aston is sitting right inside the core of the 1st ring which is the most bustling area in the city. Its value is bound to rise and become more popular in the near future.





A MASTERPIECE BY HKS

Vue Aston is a masterpiece designed by world's top design company HKS who has designed Las Vegas City Center, Atlantis Dubai and The Venetian Macao. The design of Vue Aston integrates the traditional Krama element of Cambodia into modern fashion style. The building embodies various visual changes under different angles, which not only shows the elegance of modern fashion, but also reveals the traditional culture.





5D GARDEN SYSTEM: ESCAPE FROM THE CONCRETE JUNGLE

Vue Aston adopts specially designed 5D garden system which includes the riverside green embankment, the terrace garden, the hanging gardens, the rooftop garden, and the infinity pool. These gardens are all in different heights that will highly expand your living space. When you take a stroll in the roof garden overlooking the waterscape or just sit down for a drink, you may feel like being in a resort surrounded by the great mother nature, not just a stylish apartment in the modern city.



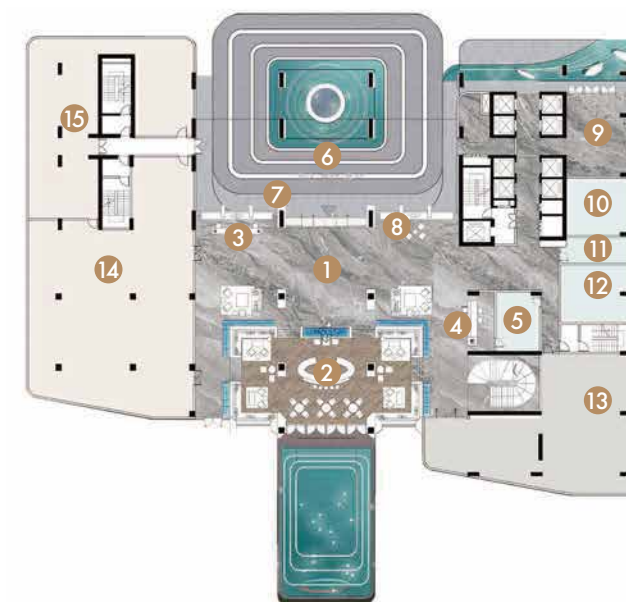


5 STAR HOTEL DOUBLE LOBBIES
SEPARATED HOTEL AND APARTMENT ROUTES

Artist's Impression

LASTING IMPRESSION LOBBY

Experience world-class amenity unlike anywhere else where a mix of sophisticated entertainment, natural beauty, and pure indulgence can be savored every day.



- | | |
|------------------|-----------------------|
| 1 Hotel Lobby | 9 Apartment Lobby |
| 2 Lobby Bar | 10 Convenience Store |
| 3 Reception | 11 Luggage Room |
| 4 Service Desk | 12 Restroom |
| 5 Service Office | 13 Cafe |
| 6 Parking Area | 14 All Day Dining |
| 7 Concierge | 15 F&B Logistics Area |
| 8 Lobby Service | |

Vue Aston provides plenty of amenities including the executive lounge, banquet hall, shared office, library & video room, sauna, gym, sky bar, infinity edge pool, and children's play room etcetera. The residences here in Vue Aston will be able to enjoy a luxurious and enriched lifestyle.

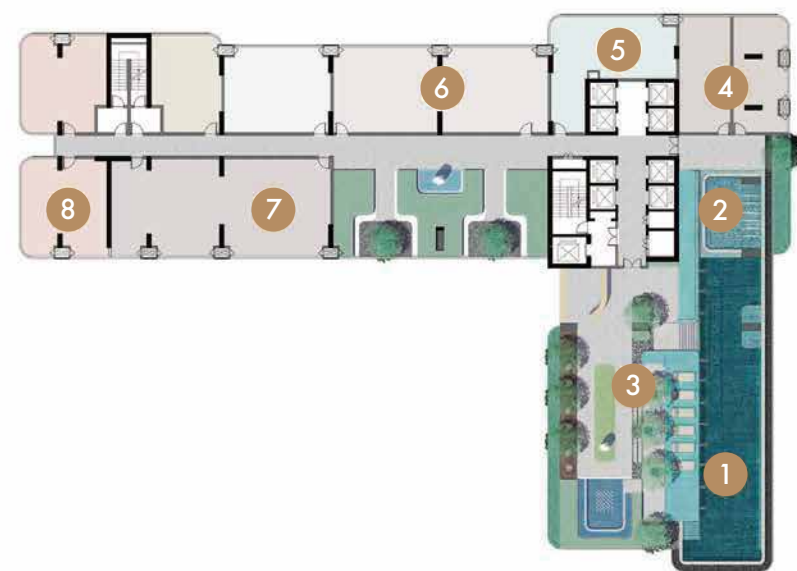
FULL FEATURED AMENITIES:
A LIFESTYLE THAT NEVER BORES YOU

	MERCHANTS & COOPERATION	HOSPITALITY MANAGEMENT	FREE / LIMITED USE BY OWNERS
1F	Full Day Restaurant Coffee Sky Bar Jewelry Store Convenience Store	Business Center Office Delivery Room	Lobby and Leisure Area
2F	Multi-purpose Room Banquet Hall Rental Office		Children Entertainment Children Library Children Multifunctional Room
2MF	Laundry Room	Hotel Office	
33F 34F	SPA	Executive Lounge Sky Bar Reception Room Multifunctional Entertainment Video Room Management Office	Swimming Pool Sky Garden Gym Library Billiard Room Ping Pong

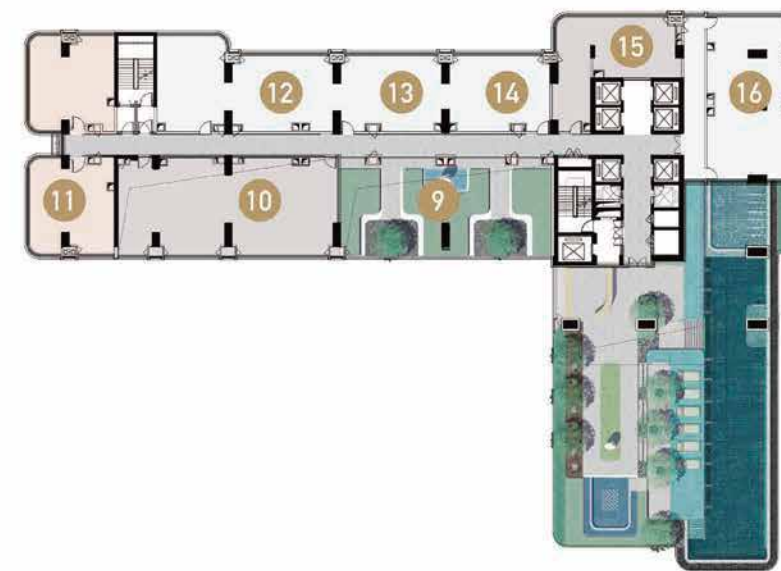


Artist's Impression

33-34F: SUPREME SUPPORTING FACILITIES



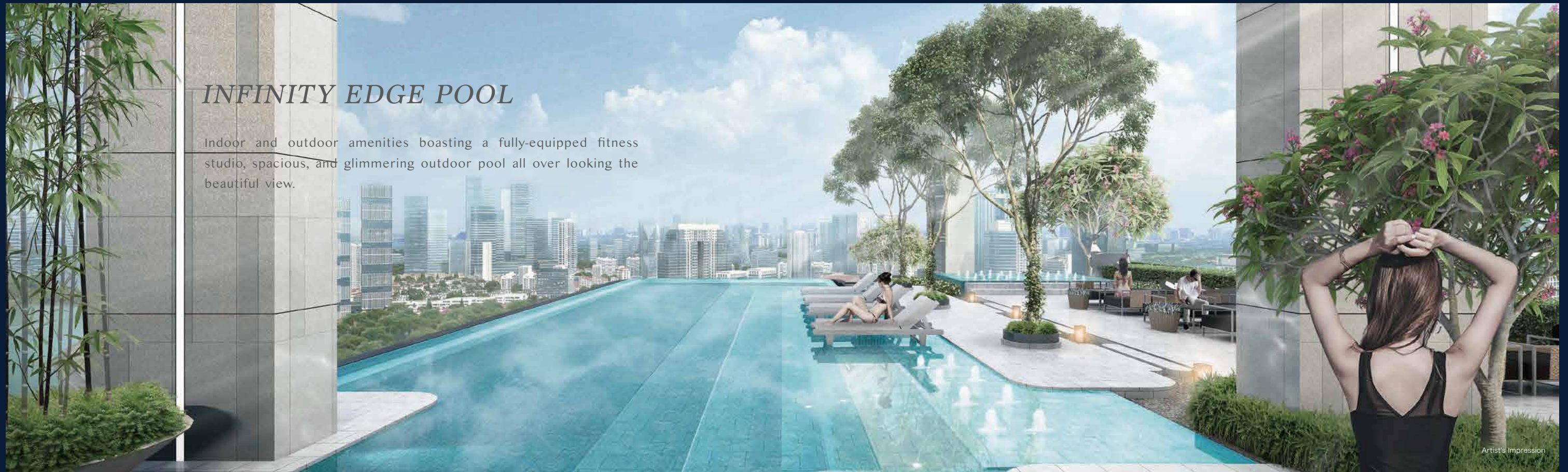
- 1 Infinity Pool
- 2 Children's Play Area
- 3 Skybar
- 4 Locker Room
- 5 Sauna
- 6 SPA
- 7 Gym
- 8 V-Club



- 9 Sky Garden
- 10 Executive Lounge
- 11 Office
- 12 Shared Office
- 13 Library
- 14 Private Cinema
- 15 Kid Care Center
- 16 Office

INFINITY EDGE POOL

Indoor and outdoor amenities boasting a fully-equipped fitness studio, spacious, and glimmering outdoor pool all over looking the beautiful view.



Artist's Impression

SKY BAR

A remarkable gathering place realizes your privileged living.



LIBRARY



SHARED OFFICE



PRIVATE CINEMA



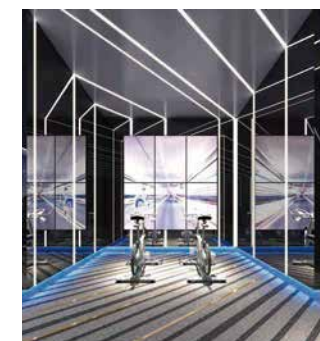
FULL SERVICE MEETS ALL YOUR NEEDS

In addition to the luxurious hardware, Vue Aston also provides you the attentive and thoughtful service including the double reception, 24-hr butler&food delivery service, business reception, house caring and more.



THE V-CLUB

Residents and guests of Vue Aston will have exclusive access to the V-Club, a world-class collection of amenities and private spaces.



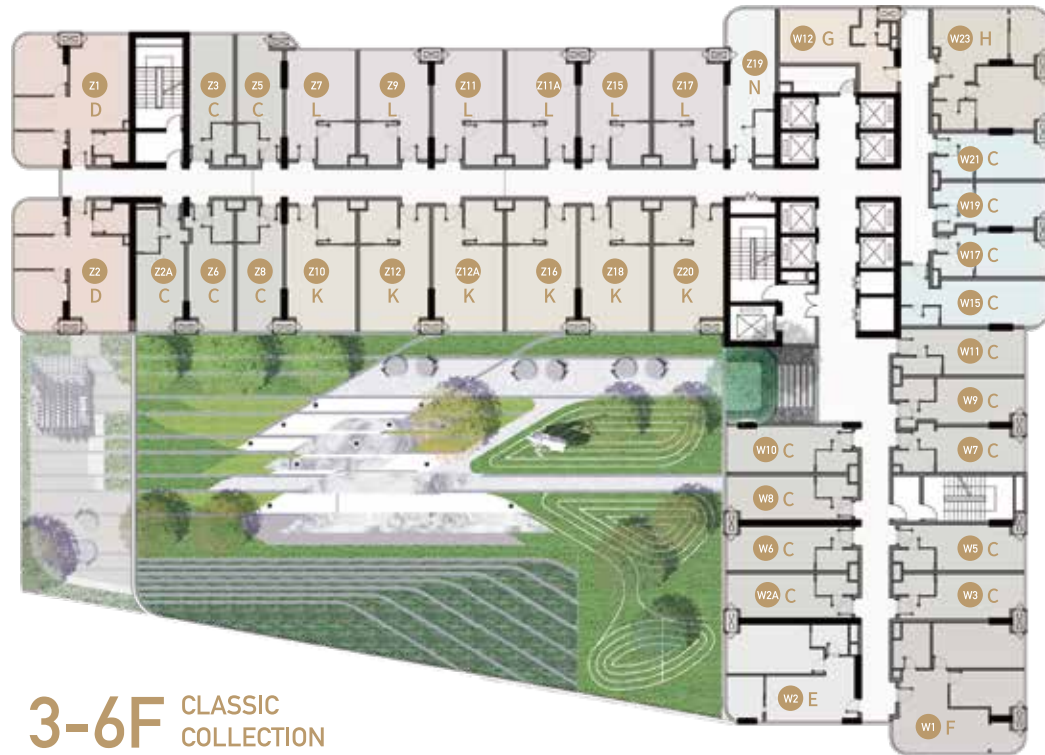
VITALITY FITNESS

From SPA to gym, Vue Aston is ready to inspire every day life with a healthy life style.



EXCELLENT DESIGN IN LAYOUT & PROPERTIES WITH PANORAMIC RIVERVIEW

Vue Aston provides various types of unit to meet different needs. Each unit is designed in exquisite details to ensure a comfortable living experience. The whole building is being featured as an L-shaped tower with its both directions outstretched to embrace the bay. This elegant shape ensures each unit can enjoy the stunning riverview. The bedroom/living room in each unit is equipped with floor-to-ceiling windows (the greatest window of view can be 270°), to present you only the very best view.



3-6F CLASSIC COLLECTION



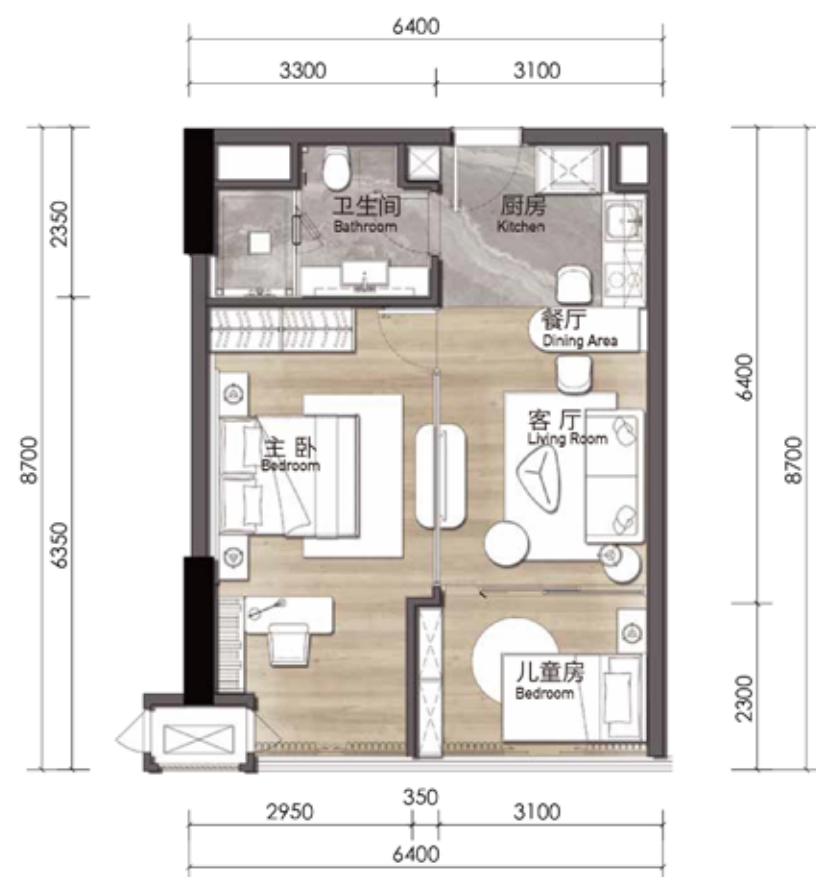
32F VUE SUITE COLLECTION



7-31F VUE SUITE COLLECTION

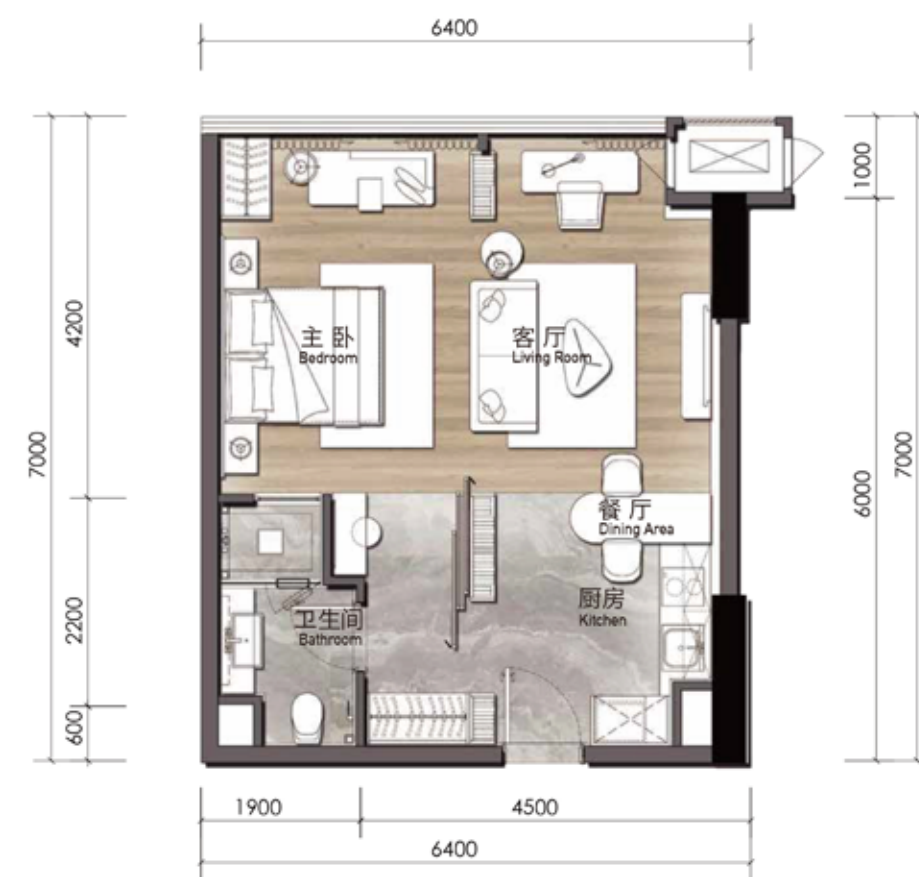


35-38F ASTON SIGNATURE COLLECTION



Type A 两室一厅一厨一卫
2Bedroom + 1Living Room + 1Kitchen + 1Bathroom

Min Gross:73.84m² Max Gross:77.3m² Min Net:53.61m² Max Net:56.12m²



Type B 一室一厅一厨一卫
1Bedroom + 1Living Room + 1Kitchen + 1Bathroom

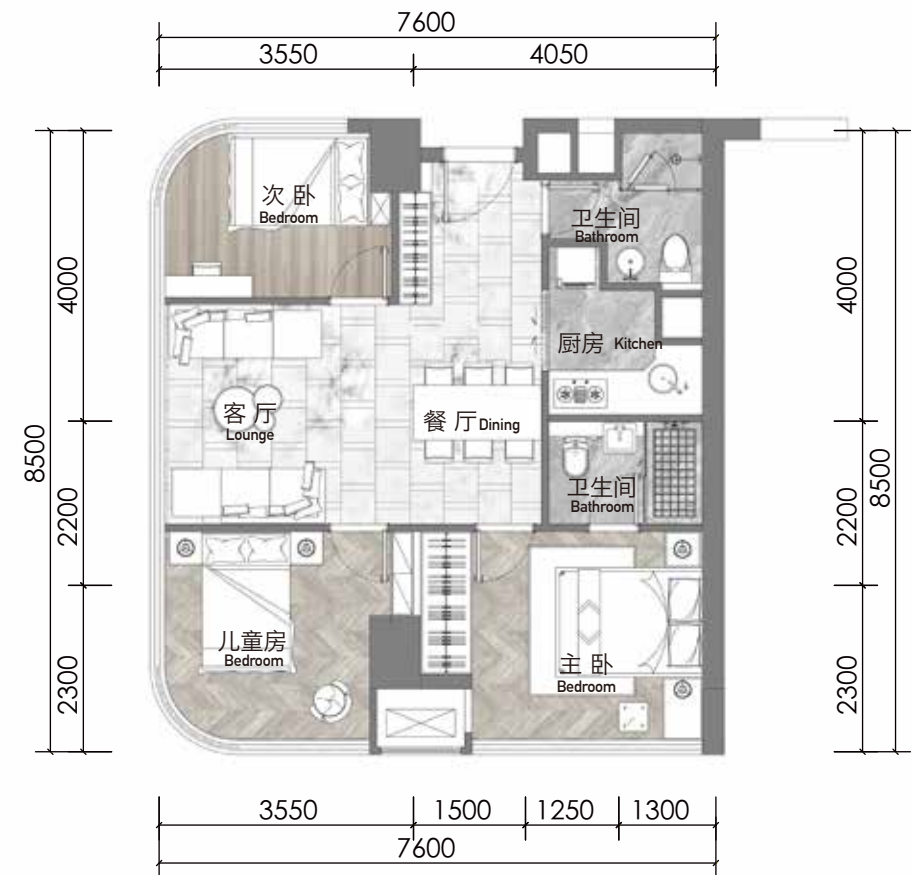
Min Gross:59.78m² Max Gross:65.76m² Min Net:43.4m² Max Net:47.74m²





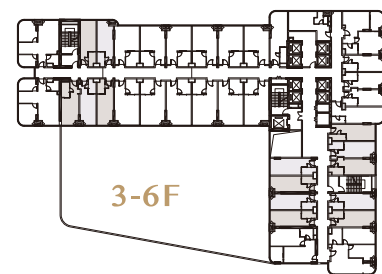
Type . **C** Studio 一室一卫
1 Bedroom + 1 Bathroom

Min Gross:36.69m² Max Gross:40.74m² Min Net:26.64m² Max Net:29.58m²

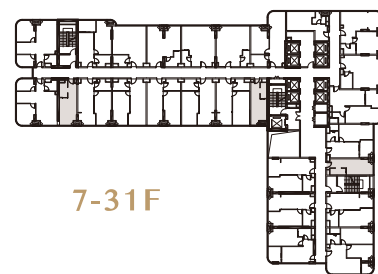


Type . **D** 三室两厅一厨二卫
3 Bedrooms + 2 Living Rooms + 1 Kitchen + 2 Bathrooms

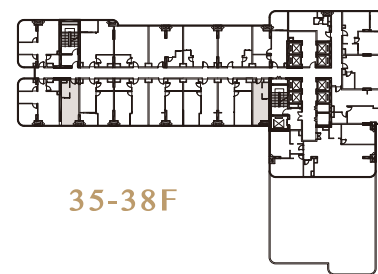
Gross:91.42m² Net:66.37m²



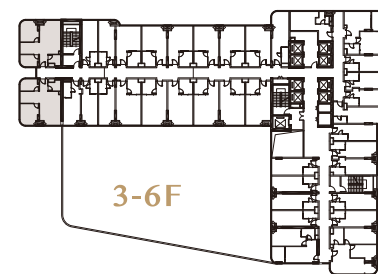
3-6F



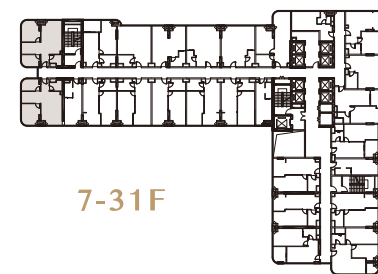
7-31F



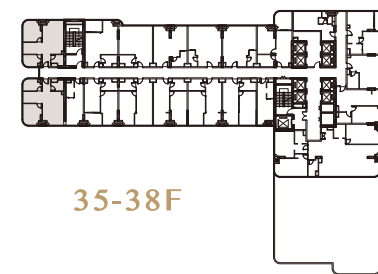
35-38F



3-6F



7-31F



35-38F



Type. A Duplex

四室一厅一厨三卫两衣帽间

4 Bedrooms + 2 Living Rooms + 1 Kitchen
+ 3 Bathrooms + 2 Walk-in Closet

Min Gross: 147.68m²

Max Gross: 154.6m²

Min Net: 107.22m²

Max Net: 112.24m²



Type. B Duplex

三室二厅一厨三卫

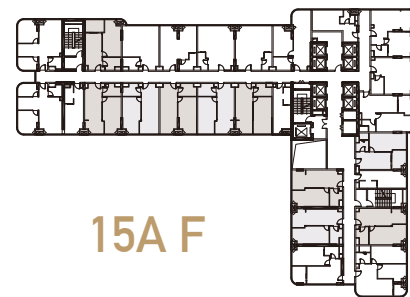
3 Bedrooms + 2 Living Rooms
+ 1 Kitchen + 3 Bathrooms

Min Gross: 119.56m²

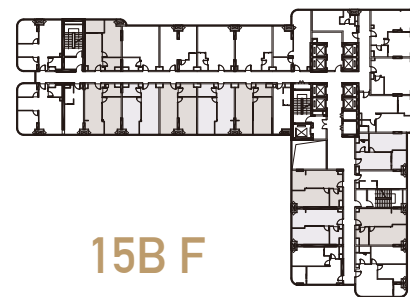
Max Gross: 131.52m²

Min Net: 86.8m²

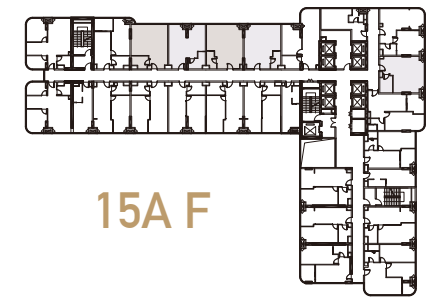
Max Net: 95.48m²



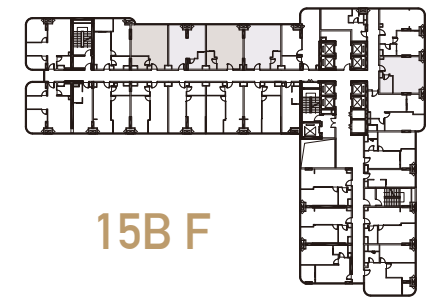
15A F



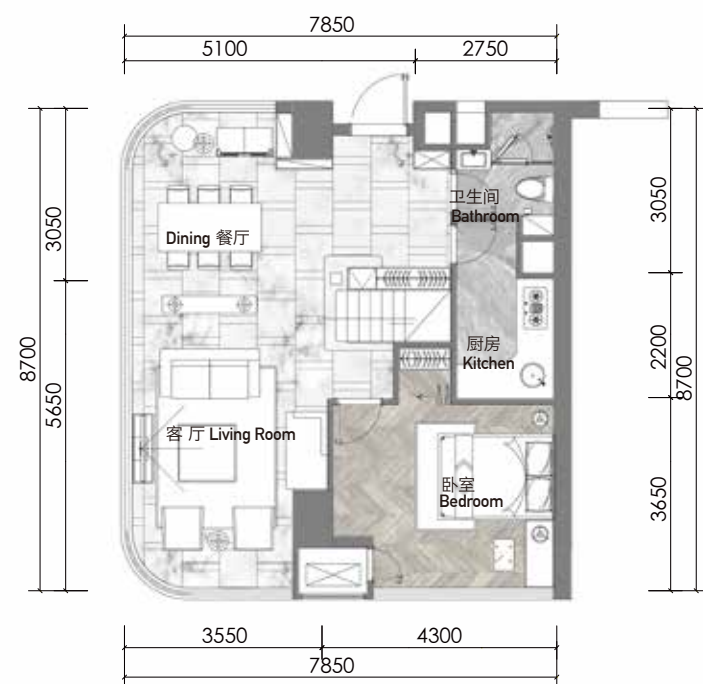
15B F



15A F



15B F



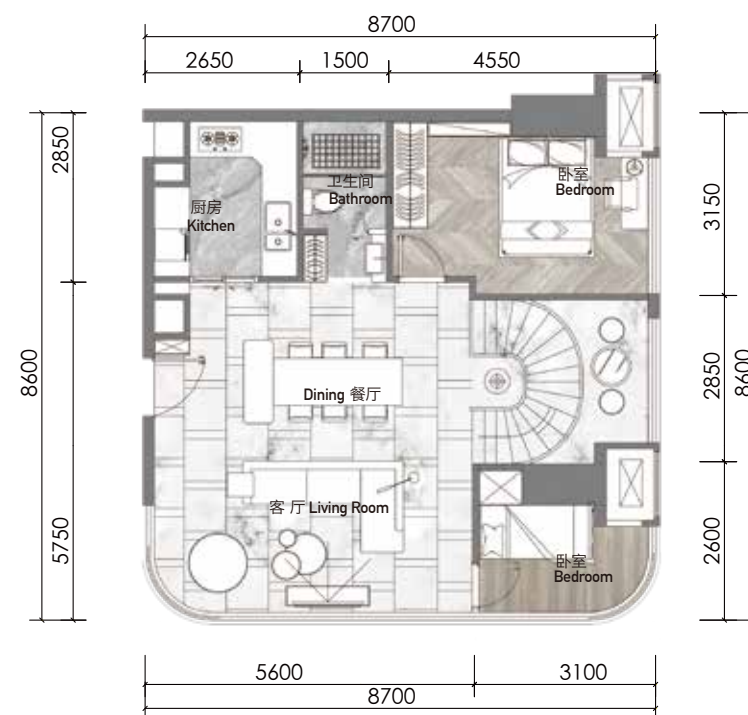
Type. D Duplex

四室三厅一厨三卫

4 Bedrooms + 3 Living Rooms
+ 1 Kitchen + 3 Bathrooms

Gross:182.84m²

Net:132.74m²



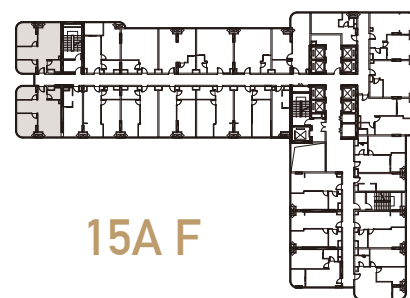
Type. F Duplex

四室三厅一书房一厨三卫

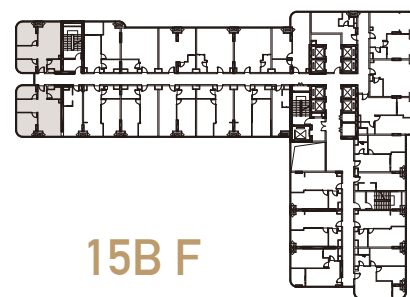
4 Bedrooms + 3 Living Rooms
+ 1 Study + 1 Kitchen + 3 Bathrooms

Gross:203.22m²

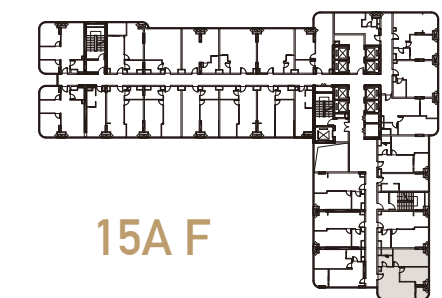
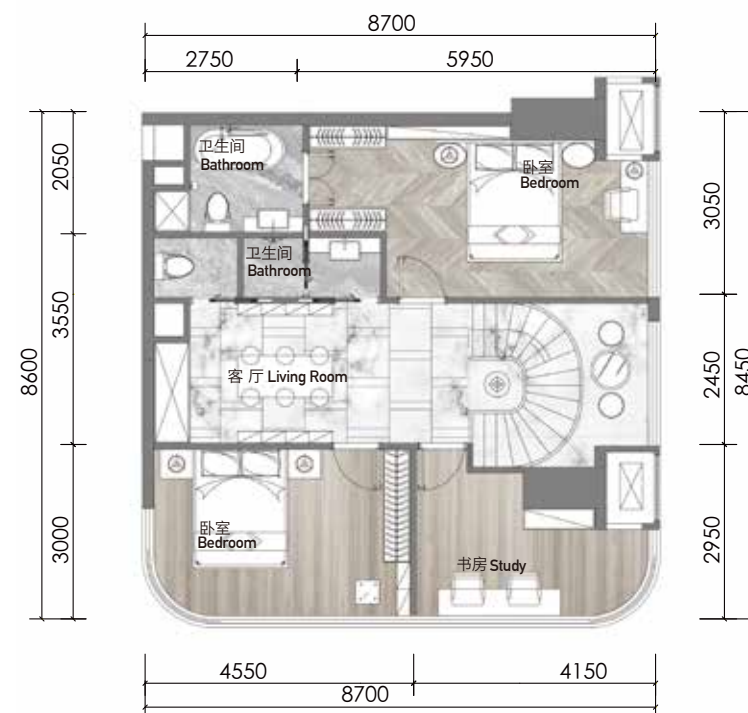
Net:147.54m²



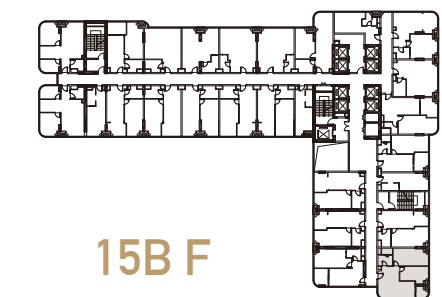
15A F



15B F



15A F



15B F



Artist's Impression

INSPIRING WATERFRONT AND CITY VIEWS

Phnom Penh is growing and extending the historic street grid into emerging district and valuable water resource. Vue Aston's overlooking blue vistas, sumptuous suite finishes, and indulgent building amenities are what make it Phnom Penh's most desirable new waterfront address.



Vue Aston

YOUR FORTUNE BEGINS HERE